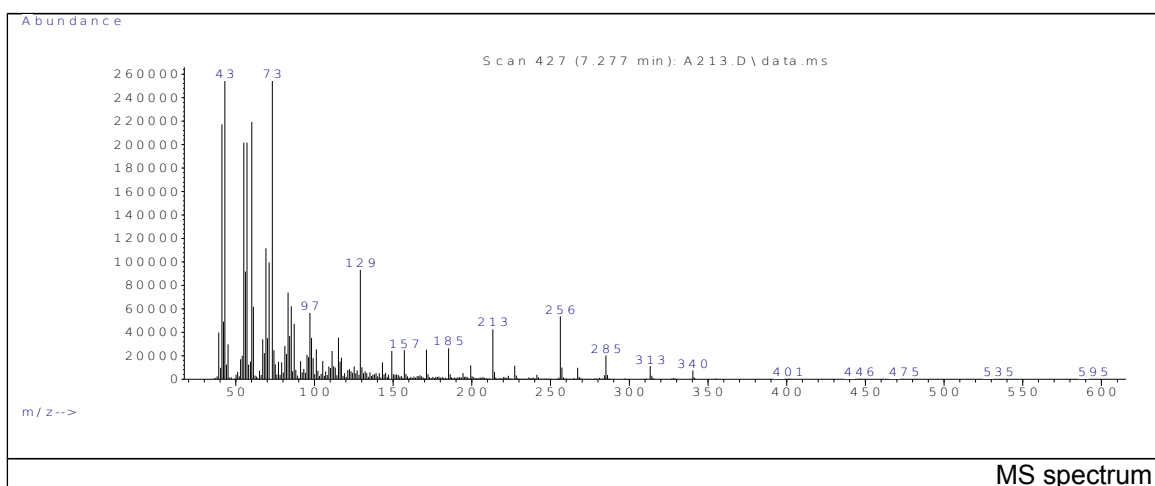
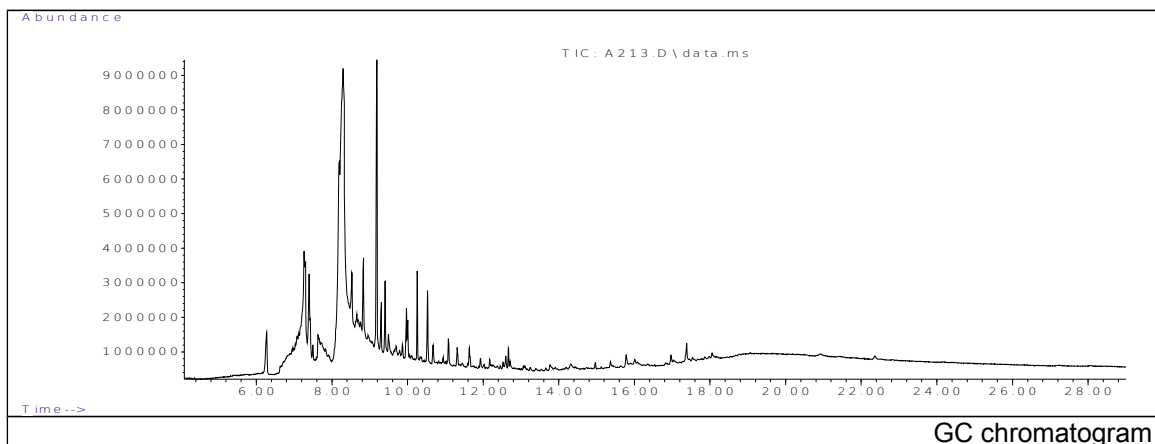


JRC CRL - FCM Database / GC-MS

Sample Name: 2,2,4,4-tetramethylcyclobutane-1,3-diol
Solvent: Hexane
Concentration: 100 µg/mL

Date: 14/04/2009
CAS: 3010-96-6
PM ref: 25187 [U.R.N. A213]



m/z	Abundance	Ion Intensity %	m/z	Abundance	Ion Intensity %

Spectrometer: HEWLETT PACKARD GC/MS 6890/5973
Inlet system: capillary GC/MS
Scan Range: 40-700 amu
Source temperature: 230°C

Flow: 1.2 mL/min
Column: HP-5MS (30 m x 0.25 mm x 0.25 µm)
Programme temperature: 60°C; 15°C/min (250°C)
10°C/min (325°C); 10 min

JRC CRL - FCM Database / GC-MS

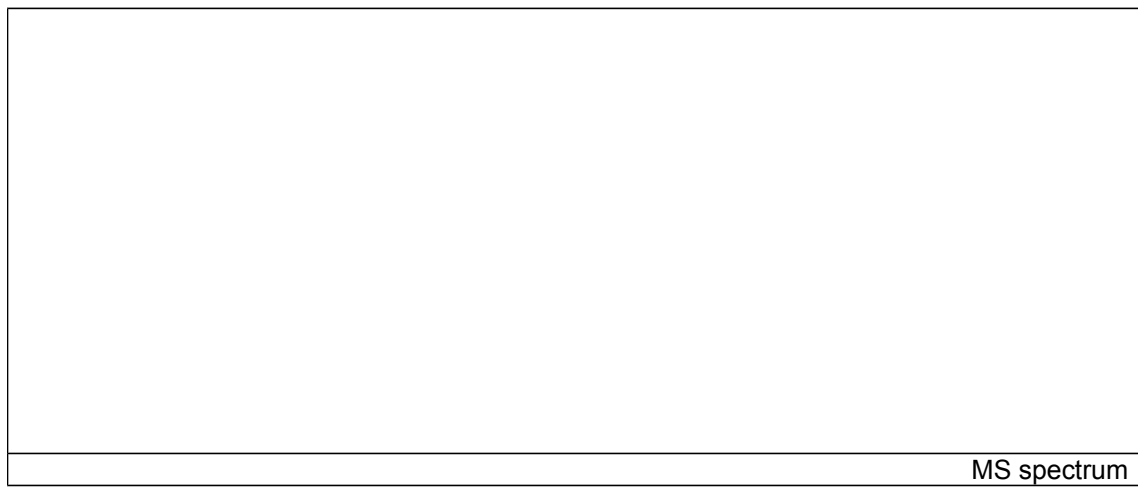


m/z	Abundance	Ion Intensity %	m/z	Abundance	Ion Intensity %

Spectrometer: HEWLETT PACKARD GC/MS 6890/5973
Inlet system: capillary GC/MS
Scan Range: 40-700 amu
Source temperature: 230°C

Flow: 1.2 mL/min
Column: HP-5MS (30 m x 0.25 mm x 0.25 µm)
Programme temperature: 60°C; 15°C/min (250°C)
10°C/min (325°C); 10 min

JRC CRL - FCM Database / GC-MS



m/z	Abundance	Ion Intensity %	m/z	Abundance	Ion Intensity %

Spectrometer: HEWLETT PACKARD GC/MS 6890/5973
Inlet system: capillary GC/MS
Scan Range: 40-700 amu
Source temperature: 230°C

Flow: 1.2 mL/min
Column: HP-5MS (30 m x 0.25 mm x 0.25 µm)
Programme temperature: 60°C; 15°C/min (250°C)
10°C/min (325°C); 10 min

JRC CRL - FCM Database / GC-MS



m/z	Abundance	Ion Intensity %	m/z	Abundance	Ion Intensity %

Spectrometer: HEWLETT PACKARD GC/MS 6890/5973
Inlet system: capillary GC/MS
Scan Range: 40-700 amu
Source temperature: 230°C

Flow: 1.2 mL/min
Column: HP-5MS (30 m x 0.25 mm x 0.25 µm)
Programme temperature: 60°C; 15°C/min (250°C)
10°C/min (325°C); 10 min