

# JRC CRL - FCM Database / GC-MS

Sample Name: Acids, C2-C24, aliphatic, linear, monocarboxylic  
from natural oils and fats, lithium salts

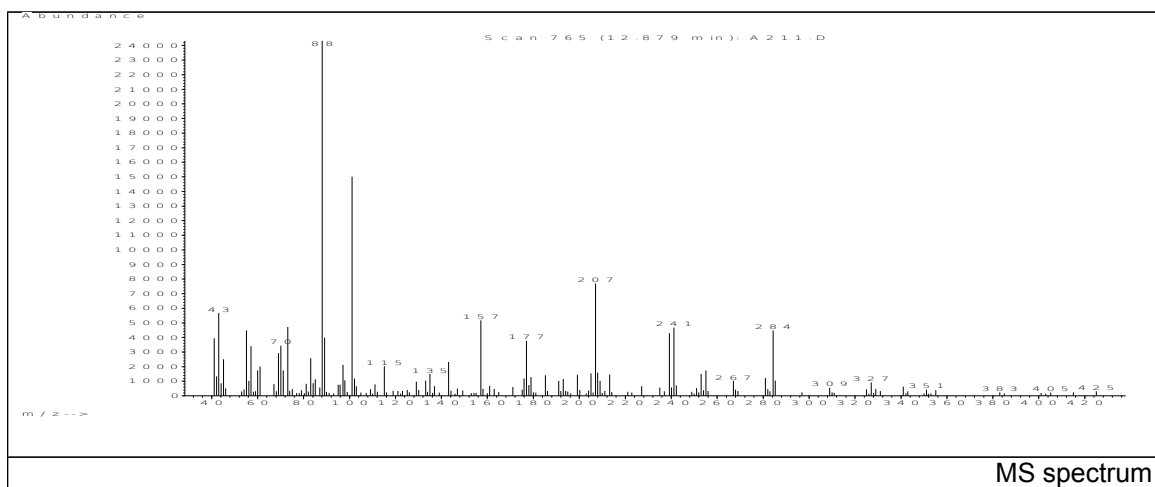
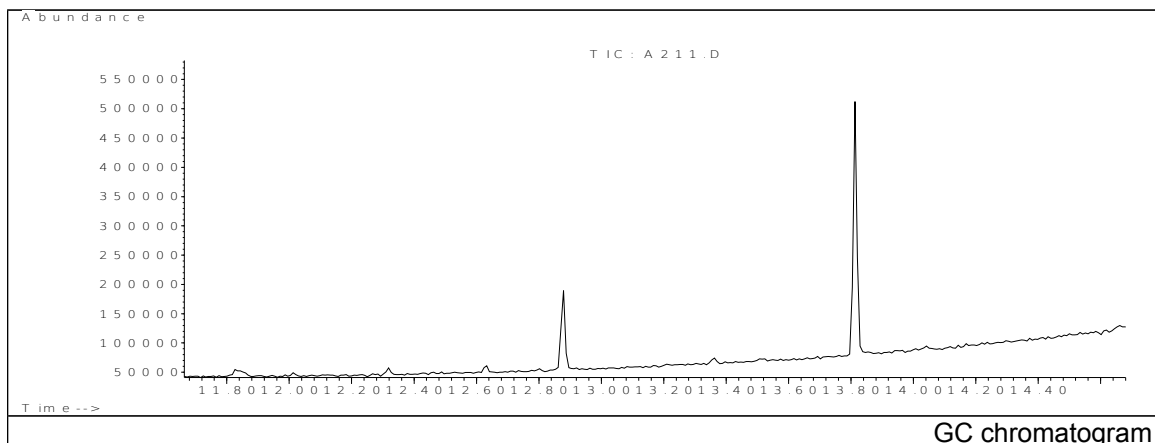
Solvent: Ethanol

Concentration: 100 µg/mL

Date: 15/01/2008

CAS: 064755-02-8

PM ref: - [U.R.N. A211]



m/z	Abundance	Ion Intensity %	m/z	Abundance	Ion Intensity %
41.10	3947.0	16.23	89.10	3989.0	16.41
43.10	5667.0	23.31	101.10	15023.0	61.79
55.10	4470.0	18.39	157.10	5175.0	21.29
57.10	3405.0	14.01	177.00	3777.0	15.54
69.10	2935.0	12.07	207.00	7699.0	31.67
70.10	3442.0	14.16	239.20	4296.0	17.67
73.10	4724.0	19.43	241.20	4679.0	19.25
88.10	24312.0	100.00	284.30	4483.0	18.44

Spectrometer: HEWLETT PACKARD GC/MS 6890/5973

Inlet system: capillary GC/MS

Scan Range: 40-700 amu

Source temperature: 230°C

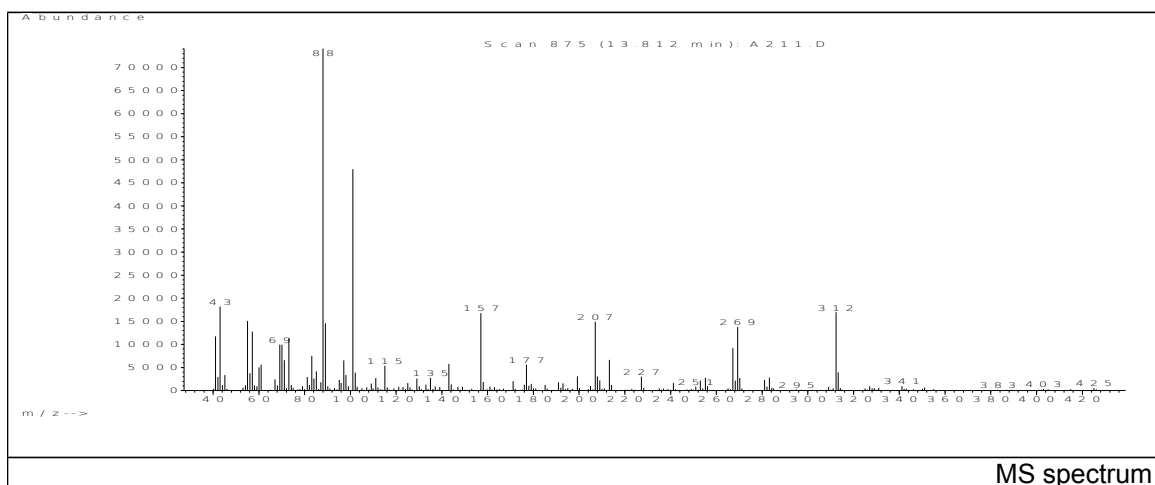
Flow: 1.2 mL/min

Column: HP-5MS (30 m x 0.25 mm x 0.25 µm)

Programme temperature: 55°C; (3min)

20°C/min (350°C); 20 min

# JRC CRL - FCM Database / GC-MS



m/z	Abundance	Ion Intensity %	m/z	Abundance	Ion Intensity %
41.10	11738.0	15.85	88.10	74072.0	100.00
43.10	18184.0	24.55	89.10	14560.0	19.66
55.10	15101.0	20.39	101.10	47992.0	64.79
57.10	12766.0	17.23	157.10	16768.0	22.64
69.10	9973.0	13.46	207.00	14947.0	20.18
70.10	9965.0	13.45	267.20	9201.0	12.42
73.10	11339.0	15.31	269.30	13770.0	18.59
83.10	7498.0	10.12	312.30	16976.0	22.92

Spectrometer: HEWLETT PACKARD GC/MS 6890/5973  
 Inlet system: capillary GC/MS  
 Scan Range: 40-700 amu  
 Source temperature: 230°C

Flow: 1.2 mL/min  
 Column: HP-5MS (30 m x 0.25 mm x 0.25 µm)  
 Programme temperature: 55°C; (3min)  
 20°C/min (350°C); 20 min