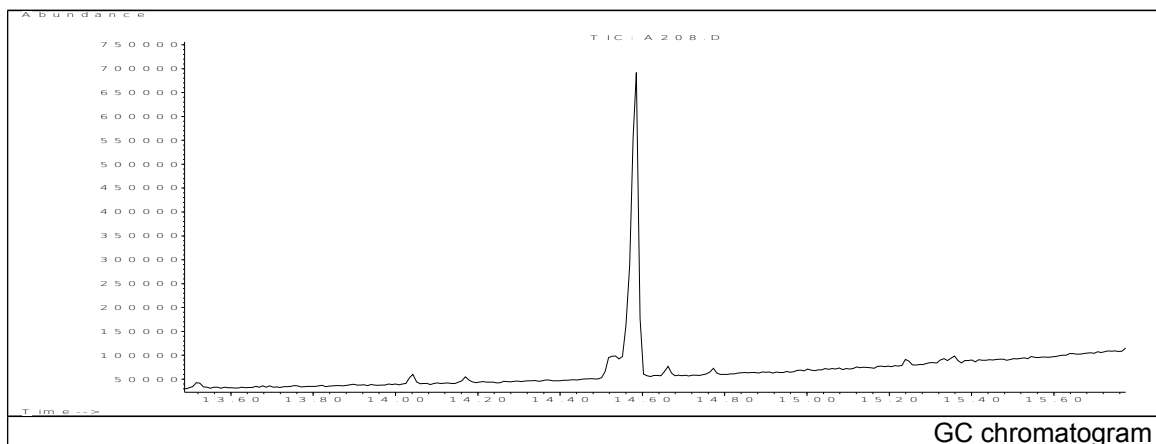


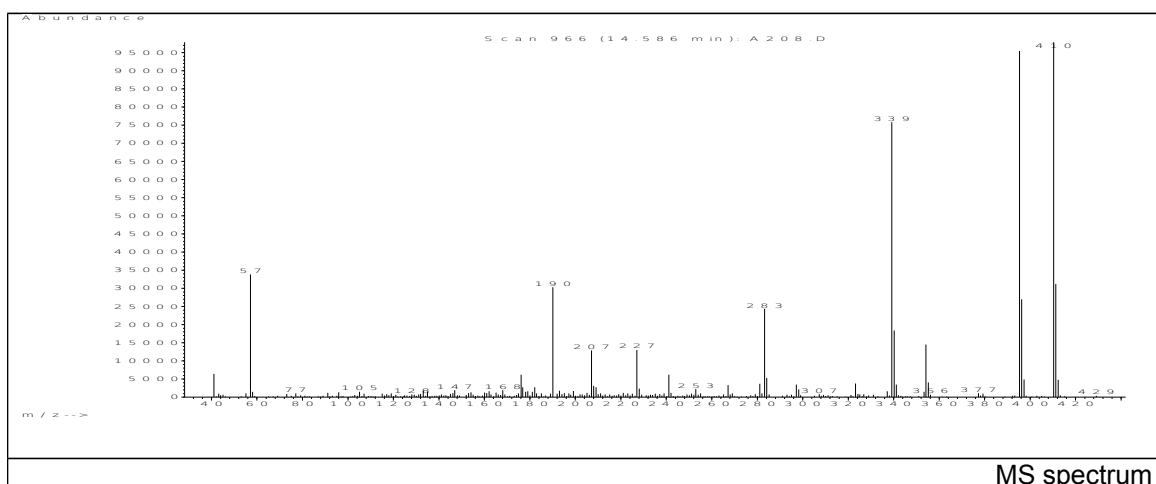
# JRC CRL - FCM Database / GC-MS

Sample Name: Chloro-fluoropolyethers acid  
Solvent: Ethanol  
Concentration: 100 µg/mL

Date: 15/01/2008  
CAS: 329238-24-6  
PM ref: - [U.R.N. A208]



GC chromatogram



MS spectrum

m/z	Abundance	Ion Intensity %	m/z	Abundance	Ion Intensity %
41.10	6432.0	6.57	284.20	5324.0	5.44
57.10	33832.0	34.57	339.20	75872.0	77.52
176.10	6161.0	6.29	340.20	18400.0	18.80
190.10	30320.0	30.98	354.20	14523.0	14.84
207.10	12892.0	13.17	395.30	95448.0	97.52
227.10	13057.0	13.34	396.30	27016.0	27.60
241.10	6222.0	6.36	410.30	97872.0	100.00
283.20	24344.0	24.87	411.30	31184.0	31.86

Spectrometer: HEWLETT PACKARD GC/MS 6890/5973  
Inlet system: capillary GC/MS  
Scan Range: 40-700 amu  
Source temperature: 230°C

Flow: 1.2 mL/min  
Column: HP-5MS (30 m x 0.25 mm x 0.25 µm)  
Programme temperature: 55°C (3min); 20°C/min  
(350°C)(20 min)