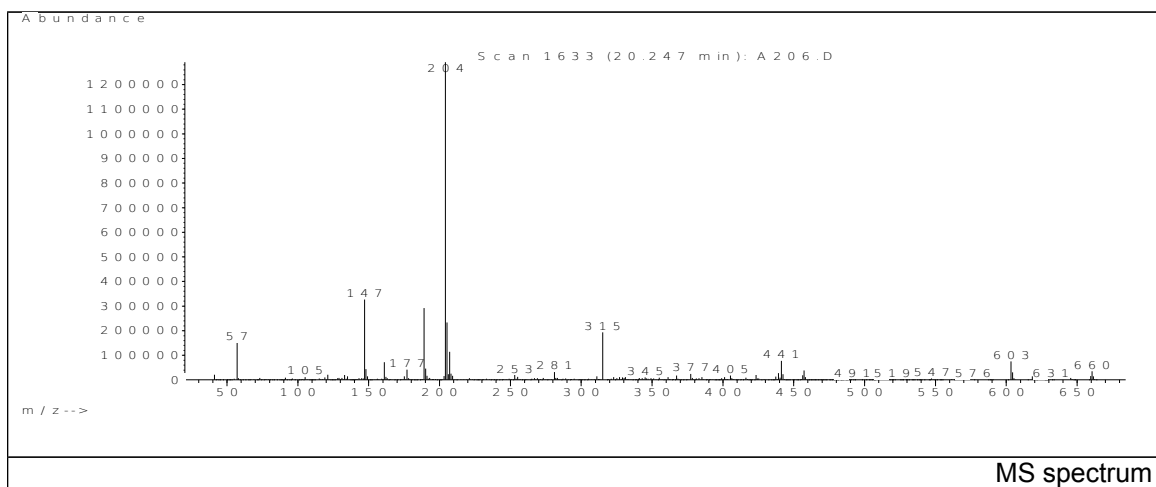
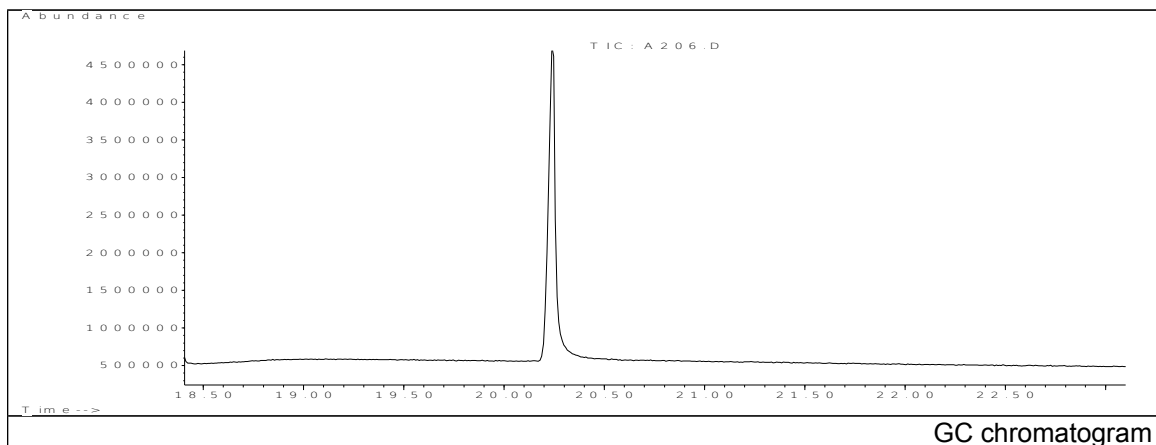


# JRC CRL - FCM Database / GC-MS

Sample Name: 6-[3-(3-t-butyl-4-hydroxy-5-methylphenyl)propoxyl]  
-2,4,8,10-tetra-t-butylidibenz-[d,f][1,3,2]dioxaphosphepin  
Solvent: Ethanol  
Concentration: 100 µg/mL

Date: 15/01/2008  
CAS: 203255-81-6  
PM ref: - [U.R.N. A206]



m/z	Abundance	Ion Intensity %	m/z	Abundance	Ion Intensity %
57.10	152064.0	11.78	205.20	234048.0	18.13
147.10	326592.0	25.29	207.10	114408.0	8.86
148.10	43720.0	3.39	281.10	31912.0	2.47
161.10	72560.0	5.62	315.20	193216.0	14.96
177.10	41672.0	3.23	441.30	78120.0	6.05
189.10	292160.0	22.63	457.30	38896.0	3.01
190.20	46128.0	3.57	603.40	75544.0	5.85
204.20	1291264.0	100.00	660.50	34760.0	2.69

Spectrometer: HEWLETT PACKARD GC/MS 6890/5973  
Inlet system: capillary GC/MS  
Scan Range: 40-700 amu  
Source temperature: 230°C

Flow: 1.2 mL/min  
Column: HP-5MS (30 m x 0.25 mm x 0.25 µm)  
Programme temperature: 55°C (3min); 20°C/min  
(350°C)(20 min)