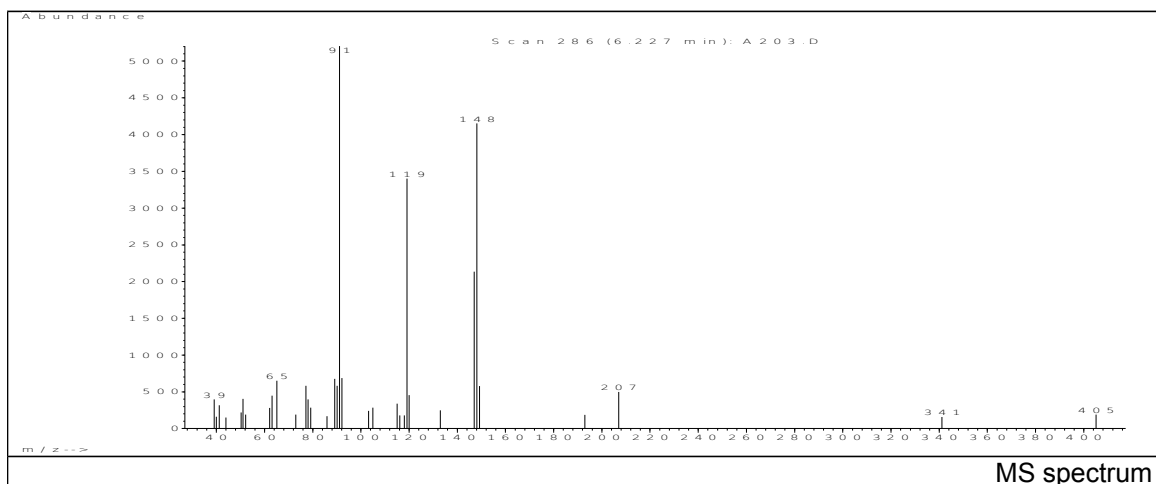
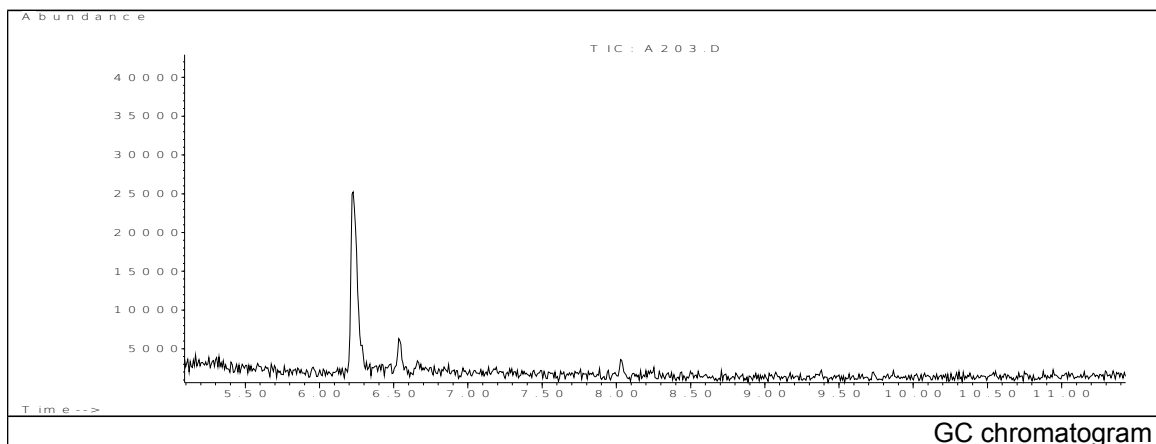


JRC CRL - FCM Database / GC-MS

Sample Name: Nonitol 1,2,3-trideoxy-4,6:5,7-bis-O-[(4-propylphenyl)methylene]
Solvent: dichloromethane
Concentration: 100 µg/mL

Date: 31/01/2007
CAS: 882073-43-0
PM ref: - [U.R.N. A203]



m/z	Abundance	Ion Intensity %	m/z	Abundance	Ion Intensity %
39.15	397.0	7.62	91.15	5207.0	100.00
51.05	403.0	7.74	92.15	686.0	13.17
63.15	448.0	8.60	119.15	3403.0	65.35
65.15	650.0	12.48	120.05	455.0	8.74
77.15	580.0	11.14	147.05	2136.0	41.02
78.05	397.0	7.62	148.15	4154.0	79.78
89.15	676.0	12.98	149.25	579.0	11.12
90.15	580.0	11.14	207.05	498.0	9.56

Spectrometer: HEWLETT PACKARD GC/MS 6890/5973
Inlet system: capillary GC/MS
Scan Range: 40-700 amu
Source temperature: 230°C

Flow: 1.2 mL/min
Column: HP-5MS (30 m x 0.25 mm x 0.25 µm)
Programme temperature: 60°C; 15°C/min (300°C)
10°C/min (325°C); 6.5 min