

JRC CRL - FCM Database / GC-MS

Sample Name: Hexanoic acid, 2-ethyl, mixed diesters with benzoic acid and neopentyl glycol

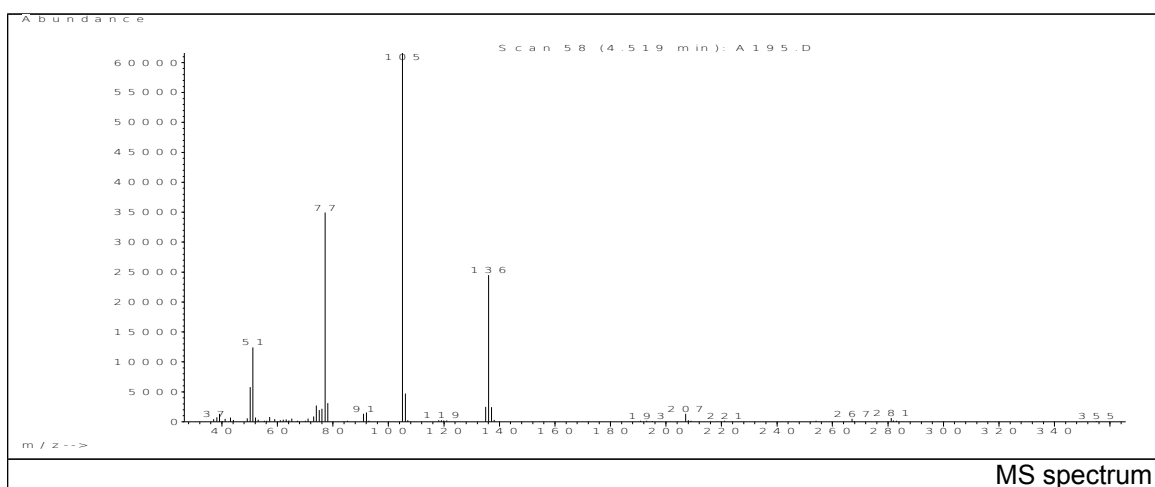
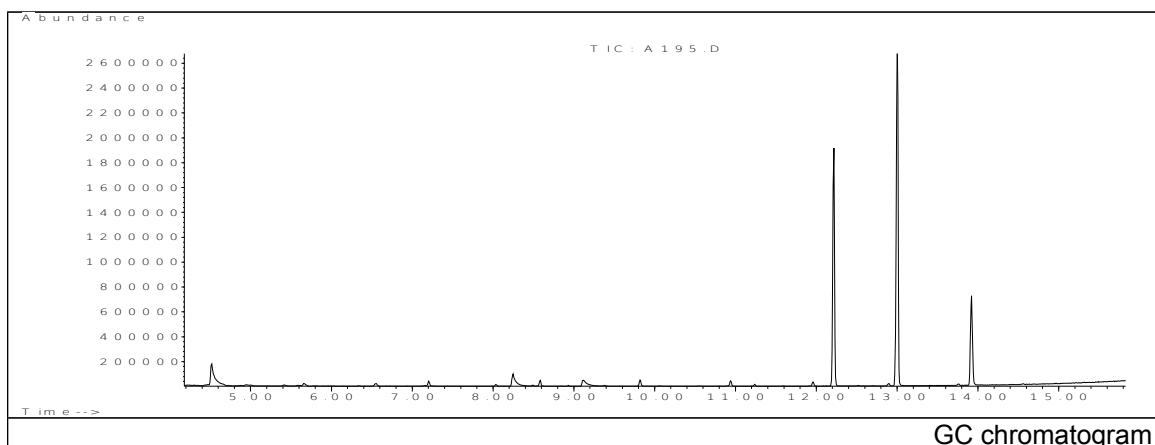
Date: 31/01/2007

Solvent: Ethanol

CAS: 610787-77-4

Concentration: 100 µg/mL

PM ref: - [U.R.N. A195]



m/z	Abundance	Ion Intensity %	m/z	Abundance	Ion Intensity %
39.15	1329.0	2.16	91.05	1316.0	2.14
50.15	5790.0	9.40	92.05	1577.0	2.56
51.15	12445.0	20.20	105.05	61608.0	100.00
74.05	2730.0	4.43	106.15	4733.0	7.68
75.05	1937.0	3.14	135.05	2488.0	4.04
76.05	2195.0	3.56	136.05	24512.0	39.79
77.15	34968.0	56.76	137.15	2441.0	3.96
78.15	3140.0	5.10	207.05	1327.0	2.15

Spectrometer: HEWLETT PACKARD GC/MS 6890/5973

Inlet system: capillary GC/MS

Scan Range: 40-700 amu

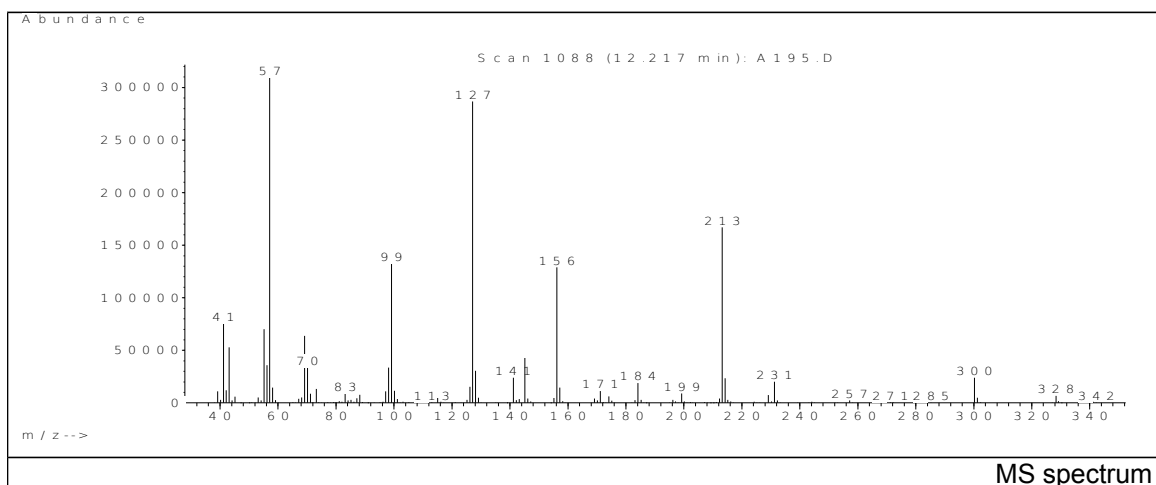
Source temperature: 230°C

Flow: 1.2 mL/min

Column: HP-5MS (30 m x 0.25 mm x 0.25 µm)

Programme temperature: 60°C; 15°C/min (300°C)
10°C/min (325°C); 6.5 min

JRC CRL - FCM Database / GC-MS

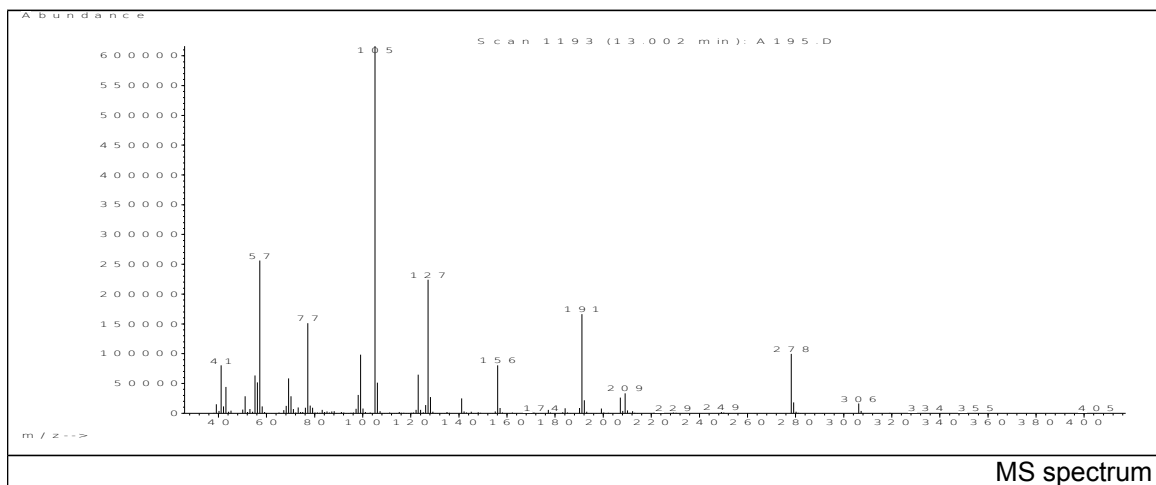


m/z	Abundance	Ion Intensity %	m/z	Abundance	Ion Intensity %
41.15	75192.0	23.37	99.15	132480.0	41.17
43.15	52776.0	16.40	127.15	286848.0	89.14
55.15	70208.0	21.82	128.15	30664.0	9.53
56.15	35912.0	11.16	141.15	24072.0	7.48
57.15	321792.0	100.00	145.15	42680.0	13.26
69.15	63896.0	19.86	156.15	129000.0	40.09
70.15	33464.0	10.40	213.25	167040.0	51.91
98.15	33624.0	10.45	300.25	23984.0	7.45

Spectrometer: HEWLETT PACKARD GC/MS 6890/5973
 Inlet system: capillary GC/MS
 Scan Range: 40-700 amu
 Source temperature: 230°C

Flow: 1.2 mL/min
 Column: HP-5MS (30 m x 0.25 mm x 0.25 µm)
 Programme temperature: 60°C; 15°C/min (300°C)
 10°C/min (325°C); 6.5 min

JRC CRL - FCM Database / GC-MS

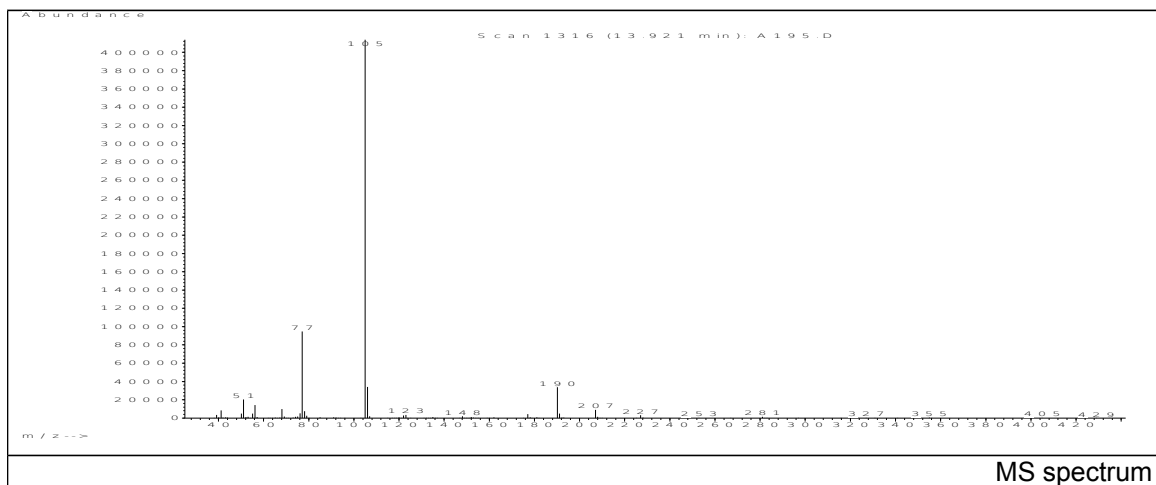


m/z	Abundance	Ion Intensity %	m/z	Abundance	Ion Intensity %
41.15	80312.0	13.04	105.05	616000.0	100.00
43.15	44384.0	7.21	106.05	51400.0	8.34
55.15	63520.0	10.31	123.05	64768.0	10.51
56.15	51904.0	8.43	127.15	224000.0	36.36
57.15	256384.0	41.62	156.15	80688.0	13.10
69.15	58304.0	9.46	191.15	166272.0	26.99
77.15	151232.0	24.55	209.15	33392.0	5.42
99.15	98336.0	15.96	278.15	99672.0	16.18

Spectrometer: HEWLETT PACKARD GC/MS 6890/5973
 Inlet system: capillary GC/MS
 Scan Range: 40-700 amu
 Source temperature: 230°C

Flow: 1.2 mL/min
 Column: HP-5MS (30 m x 0.25 mm x 0.25 µm)
 Programme temperature: 60°C; 15°C/min (300°C)
 10°C/min (325°C); 6.5 min

JRC CRL - FCM Database / GC-MS



m/z	Abundance	Ion Intensity %	m/z	Abundance	Ion Intensity %
41.15	8411.0	2.03	78.15	7561.0	1.83
50.15	4988.0	1.21	105.05	413824.0	100.00
51.15	20472.0	4.95	106.05	34144.0	8.25
55.15	4883.0	1.18	123.05	3505.0	0.85
56.15	14160.0	3.42	177.05	4368.0	1.06
68.15	9899.0	2.39	190.15	33632.0	8.13
76.15	5316.0	1.28	191.15	4959.0	1.20
77.15	94664.0	22.88	207.15	9095.0	2.20

Spectrometer: HEWLETT PACKARD GC/MS 6890/5973
 Inlet system: capillary GC/MS
 Scan Range: 40-700 amu
 Source temperature: 230°C

Flow: 1.2 mL/min
 Column: HP-5MS (30 m x 0.25 mm x 0.25 µm)
 Programme temperature: 60°C; 15°C/min (300°C)
 10°C/min (325°C); 6.5 min