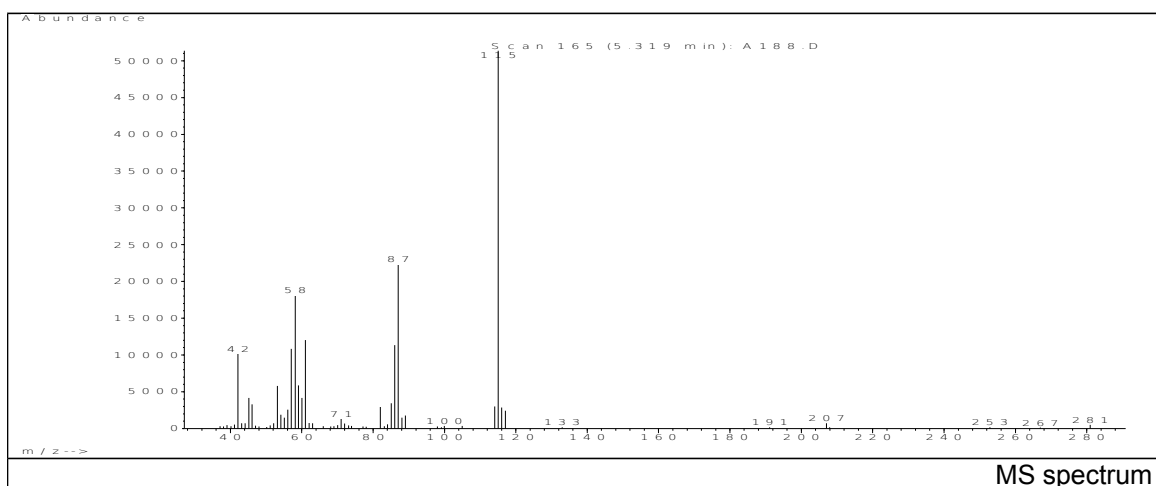
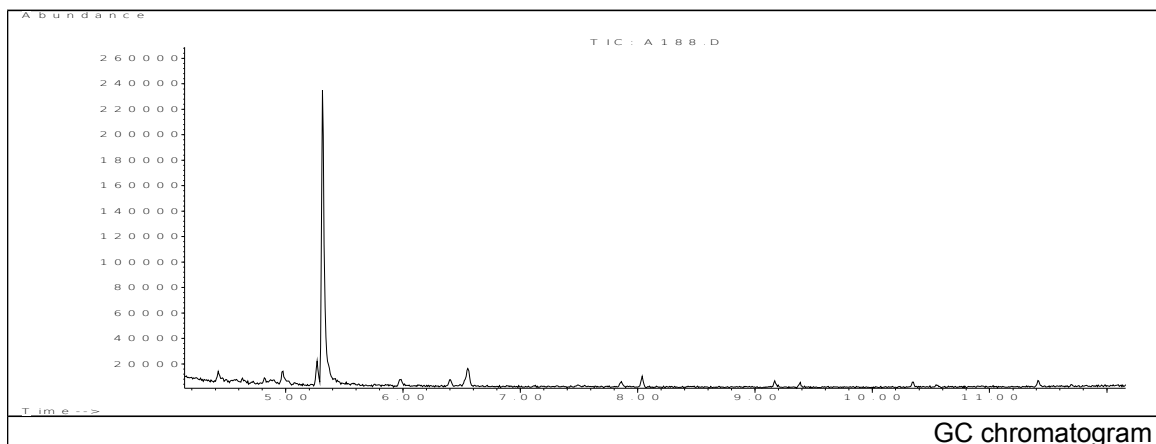


JRC CRL - FCM Database / GC-MS

Sample Name: 2-Methyl-4-isothiazolin-3-one
Solvent: Methanol
Concentration: 100 µg/mL

Date: 31/01/2007
CAS: 002682-20-4
PM ref: 66755 [U.R.N. A188]



m/z	Abundance	Ion Intensity %	m/z	Abundance	Ion Intensity %
42.15	10132.0	19.72	61.05	12017.0	23.39
45.15	4153.0	8.08	82.05	2947.0	5.74
46.05	3292.0	6.41	85.05	3449.0	6.71
53.15	5801.0	11.29	86.05	11325.0	22.04
57.05	10817.0	21.05	87.05	22328.0	43.45
58.15	18112.0	35.25	114.05	3016.0	5.87
59.05	5868.0	11.42	115.05	51384.0	100.00
60.05	4157.0	8.09	116.05	2842.0	5.53

Spectrometer: HEWLETT PACKARD GC/MS 6890/5973
Inlet system: capillary GC/MS
Scan Range: 40-700 amu
Source temperature: 230°C

Flow: 1.2 mL/min
Column: HP-5MS (30 m x 0.25 mm x 0.25 µm)
Programme temperature: 60°C; 15°C/min (300°C)
10°C/min (325°C); 6.5 min