

# JRC CRL - FCM Database / GC-MS

Sample Name: N-[3,5-bis-(2,2-dimethyl-propionylamino)-phenyl]-2,2-dimethyl-propionamide

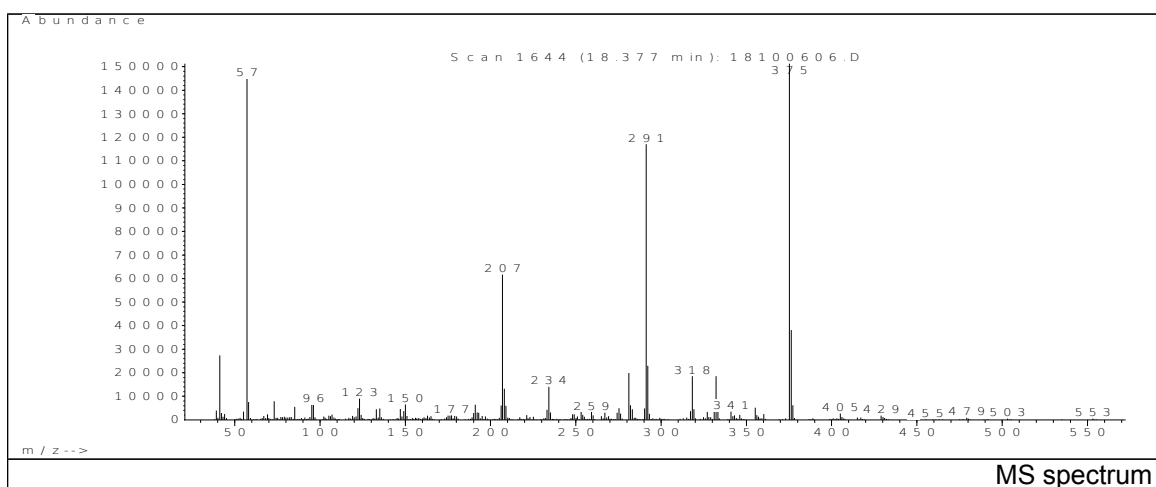
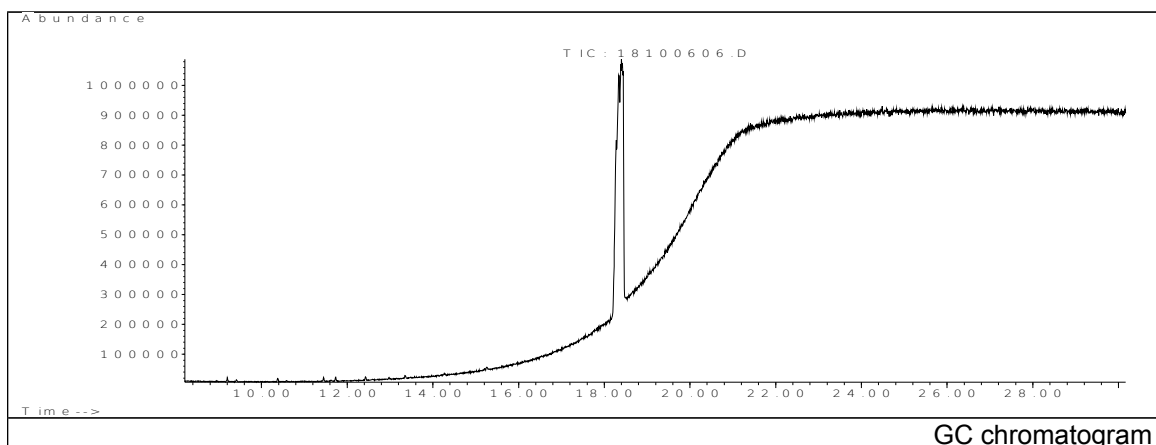
Date: 26/10/2006

Solvent: Ethanol

CAS: -

Concentration: 100 µg/mL

PM ref: 95420 [U.R.N. A179]



m/z	Abundance	Ion Intensity %	m/z	Abundance	Ion Intensity %
41.15	27336.0	18.08	253.05	8366.0	5.53
57.15	145024.0	95.90	281.05	19840.0	13.12
58.15	7532.0	4.98	291.25	117064.0	77.41
73.15	7941.0	5.25	292.25	22928.0	15.16
123.15	9020.0	5.96	318.25	18536.0	12.26
207.05	61648.0	40.76	332.25	18504.0	12.24
208.05	13180.0	8.72	375.25	151232.0	100.00
234.15	14034.0	9.28	376.25	38064.0	25.17

Spectrometer: HEWLETT PACKARD GC/MS 6890/5973

Inlet system: capillary GC/MS

Scan Range: 40-700 amu

Source temperature: 230°C

Flow: 1.2 mL/min

Column: HP-5MS (30 m x 0.25 mm x 0.25 µm)

Programme temperature: 60°C; 15°C/min (250°C)  
10°C/min (325°C); 10 min