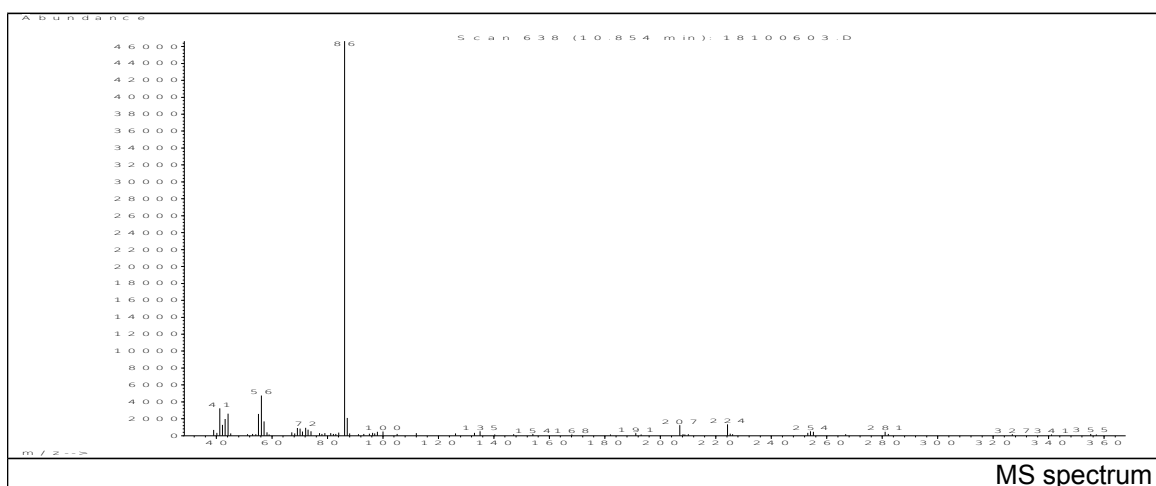
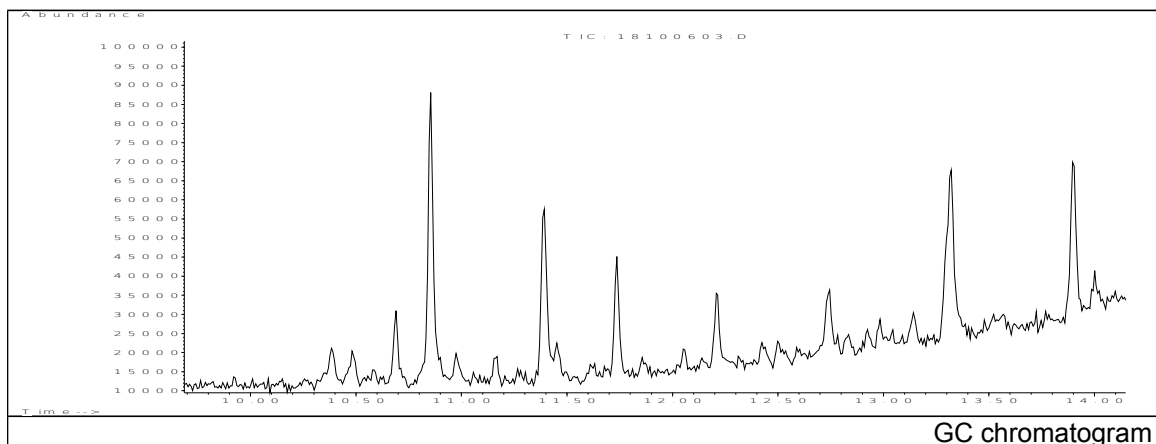


JRC CRL - FCM Database / GC-MS

Sample Name: N,N-Bis(2-hydroxyethyl)alkyl (C8-C18) amine
Solvent: Ethanol
Concentration: 100 µg/mL

Date: 26/10/2006
CAS: 071786-60-2
PM ref: 39090 [U.R.N. A176]

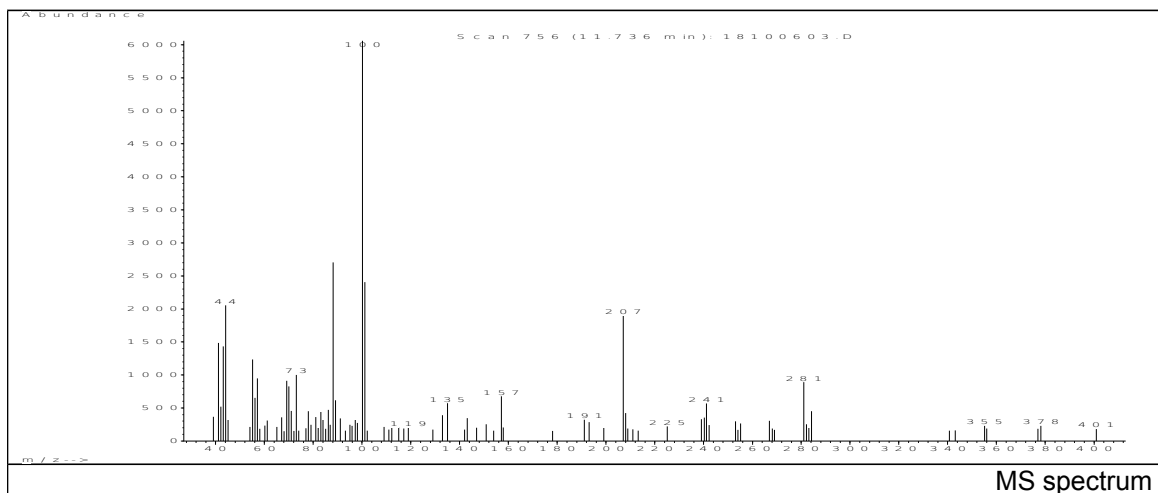


m/z	Abundance	Ion Intensity %	m/z	Abundance	Ion Intensity %
39.05	686.0	1.47	69.15	947.0	2.03
41.15	3236.0	6.94	70.15	849.0	1.82
42.15	1268.0	2.72	72.15	941.0	2.02
43.15	1979.0	4.24	73.05	717.0	1.54
44.15	2598.0	5.57	86.15	46648.0	100.00
55.15	2586.0	5.54	87.15	2102.0	4.51
56.15	4742.0	10.17	207.05	1235.0	2.65
57.15	1675.0	3.59	224.25	1335.0	2.86

Spectrometer: HEWLETT PACKARD GC/MS 6890/5973
Inlet system: capillary GC/MS
Scan Range: 40-700 amu
Source temperature: 230°C

Flow: 1.2 mL/min
Column: HP-5MS (30 m x 0.25 mm x 0.25 µm)
Programme temperature: 60°C; 15°C/min (250°C)
10°C/min (325°C); 10 min

JRC CRL - FCM Database / GC-MS

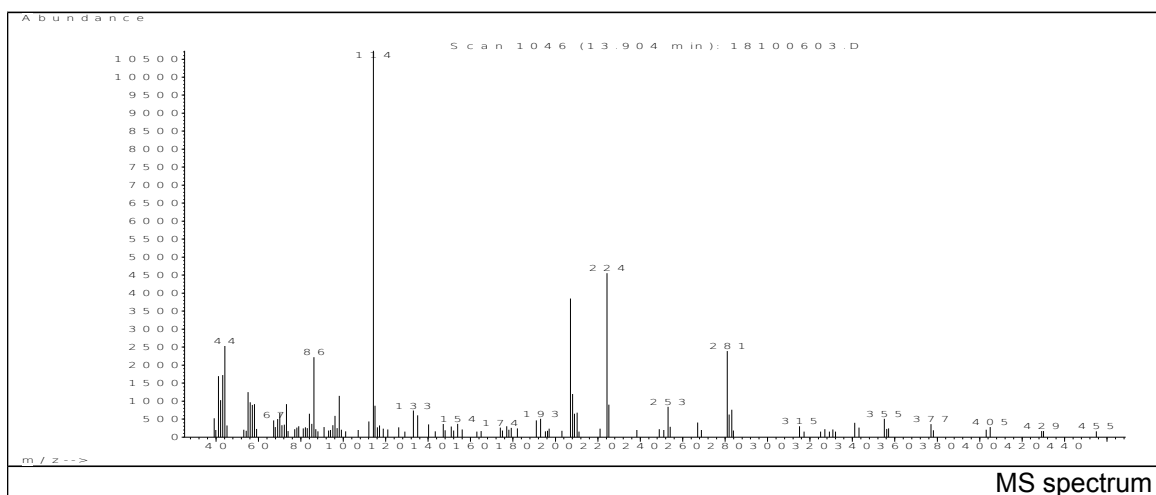


m/z	Abundance	Ion Intensity %	m/z	Abundance	Ion Intensity %
41.15	1486.0	24.53	73.05	1000.0	16.50
43.15	1431.0	23.62	88.15	2703.0	44.61
44.05	2053.0	33.88	89.15	618.0	10.20
55.15	1235.0	20.38	100.15	6059.0	100.00
56.15	654.0	10.79	101.15	2405.0	39.69
57.15	949.0	15.66	157.15	678.0	11.19
69.15	914.0	15.08	207.05	1893.0	31.24
70.05	828.0	13.67	281.05	890.0	14.69

Spectrometer: HEWLETT PACKARD GC/MS 6890/5973
 Inlet system: capillary GC/MS
 Scan Range: 40-700 amu
 Source temperature: 230°C

Flow: 1.2 mL/min
 Column: HP-5MS (30 m x 0.25 mm x 0.25 µm)
 Programme temperature: 60°C; 15°C/min (250°C)
 10°C/min (325°C); 10 min

JRC CRL - FCM Database / GC-MS



m/z	Abundance	Ion Intensity %	m/z	Abundance	Ion Intensity %
41.15	1691.0	15.75	86.15	2220.0	20.68
42.15	1030.0	9.59	98.15	1146.0	10.68
43.15	1724.0	16.06	114.15	10735.0	100.00
44.15	2533.0	23.60	207.05	3850.0	35.86
55.15	1248.0	11.63	208.05	1198.0	11.16
56.15	968.0	9.02	224.35	4550.0	42.38
58.15	915.0	8.52	225.25	898.0	8.37
73.15	918.0	8.55	281.05	2388.0	22.24

Spectrometer: HEWLETT PACKARD GC/MS 6890/5973
 Inlet system: capillary GC/MS
 Scan Range: 40-700 amu
 Source temperature: 230°C

Flow: 1.2 mL/min
 Column: HP-5MS (30 m x 0.25 mm x 0.25 µm)
 Programme temperature: 60°C; 15°C/min (250°C)
 10°C/min (325°C); 10 min