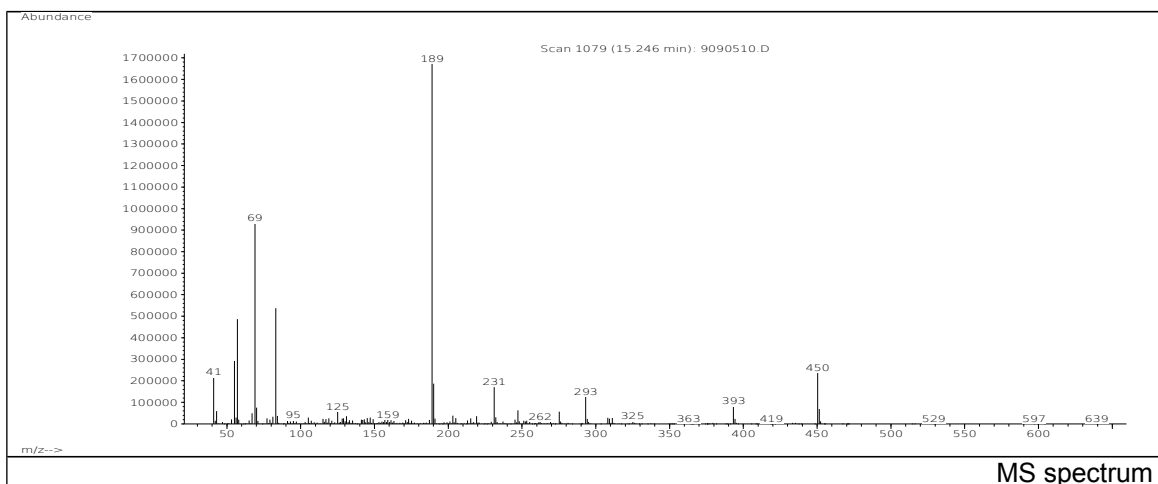
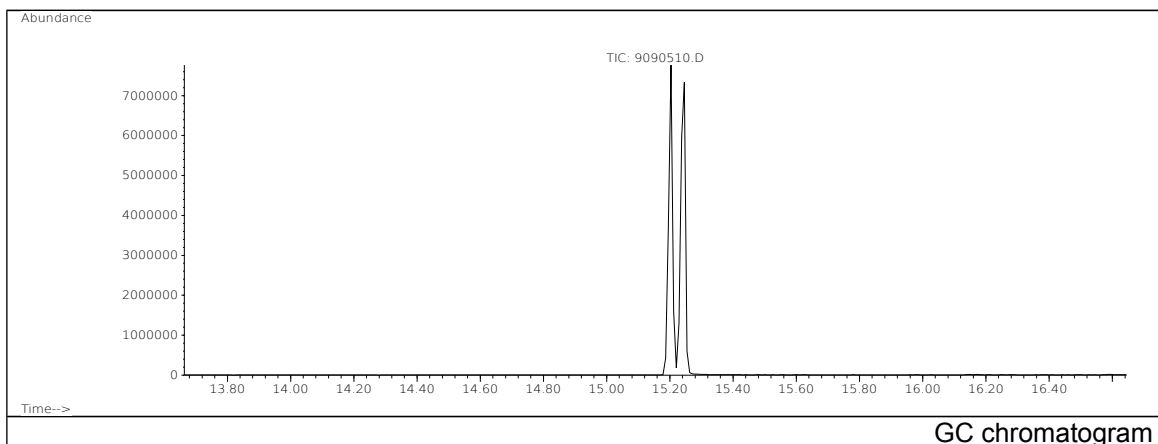


JRC CRL - FCM Database / GC-MS

Sample Name: 2,4,6-Tris(tert-butyl)phenyl-2-butyl-2-ethyl-1,3-propanediol phosphite Date: 30/08/2005
 Solvent: Ethanol CAS: 161717-32-4
 Concentration: 100 µg/mL PM ref: 95270 [U.R.N. A166]



m/z	Abundance	Ion Intensity %	m/z	Abundance	Ion Intensity %
41.10	216064,0	12,57	190.10	186752,0	10,87
43.10	59232,0	3,45	231.20	170304,0	9,91
55.10	292544,0	17,02	247.20	63040,0	3,67
57.10	486976,0	28,33	293.20	126088,0	7,34
69.10	931328,0	54,19	393.30	81184,0	4,72
70.10	75560,0	4,40	450.40	236544,0	13,76
83.10	536960,0	31,24	451.40	69776,0	4,06
189.10	1718784,0	100,00			

Spectrometer: HEWLETT PACKARD GC/MS 6890/5973
 Inlet system: capillary GC/MS
 Scan Range: 40-700 amu
 Source temperature: 230 °C

Flow: 1.2 mL/min
 Column: DB 17-HT (30 m x 0.25 mm x 0.15 µm)
 Programme temperature: 40 °C (3 min); 20 °C/min
 (350 °C); 350 °C (20 min)