

# JRC CRL - FCM Database / GC-MS

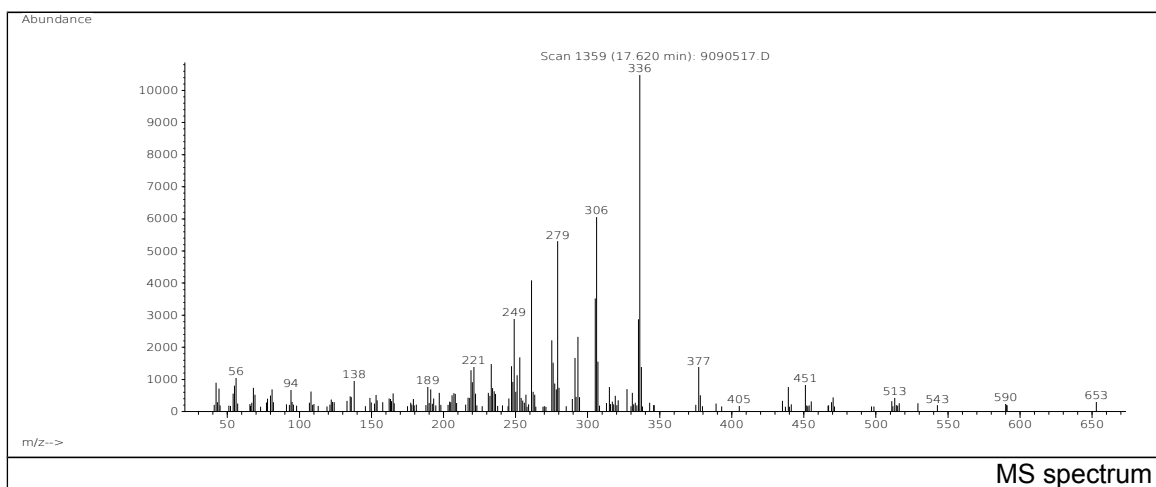
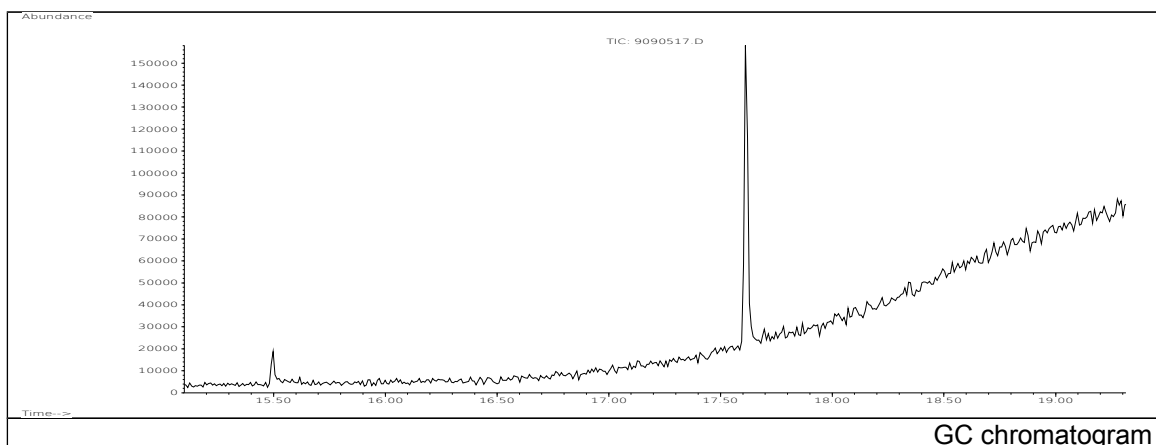
Sample Name: Poly(6-morpholino-1,3,5,-triazine-2,4,-diyl)-[(2,2,6,6,-tetramethyl-4-piperidyl)imino]-hexamethylene-[(2,2,6,6-tetramethyl-4-piperidyl)-imino]

Solvent: Hexane

CAS: 090751-07-8; 082451-48-7

Concentration: 100 µg/mL

PM ref: 80480 [U.R.N. A154]



m/z	Abundance	Ion Intensity %	m/z	Abundance	Ion Intensity %
219.10	2074,0	17,59	293.10	3066,0	26,00
221.20	2800,0	23,74	305.20	3707,0	31,43
249.20	5140,0	43,59	306.20	8768,0	74,35
261.20	5573,0	47,26	307.20	2265,0	19,21
275.20	3424,0	29,03	335.20	2121,0	17,99
276.20	2565,0	21,75	336.20	11793,0	100,00
279.20	8704,0	73,81	337.20	2580,0	21,88
291.30	2569,0	21,78			

Spectrometer: HEWLETT PACKARD GC/MS 6890/5973

Inlet system: capillary GC/MS

Scan Range: 40-700 amu

Source temperature: 230 °C

Flow: 1.2 mL/min

Column: DB 17-HT (30 m x 0.25 mm x 0.15 µm)

Programme temperature: 40 °C (3 min); 20 °C/min  
(350 °C); 350 °C (20 min)