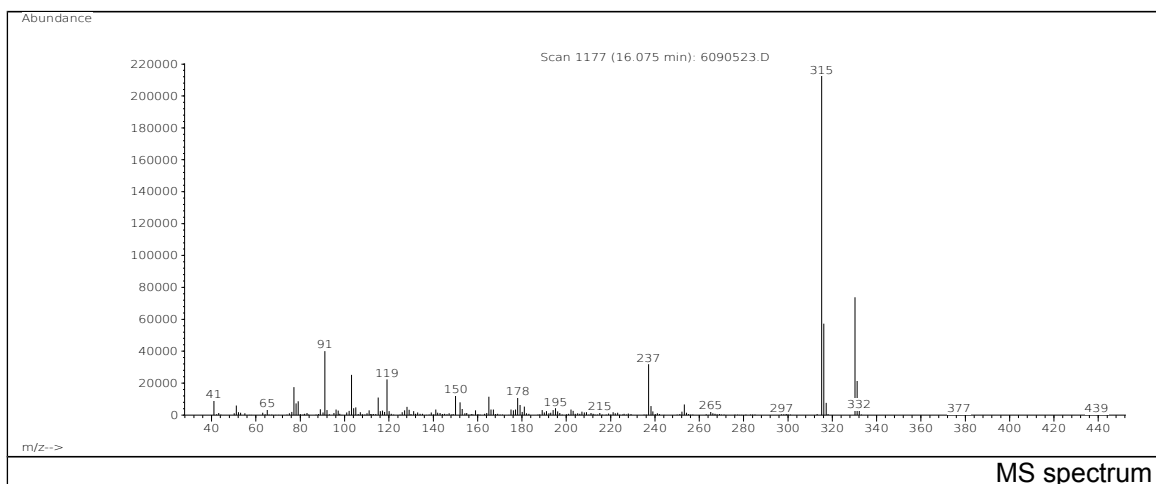
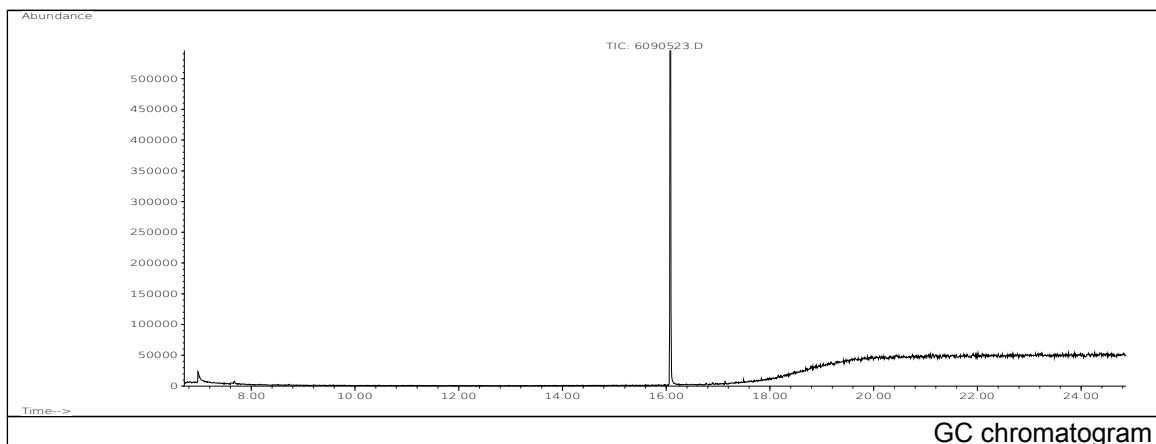


JRC CRL - FCM Database / GC-MS

Sample Name: Bis(2,4-dicumylphenyl)pentaerythritol diphosphite Date: 30/08/2005
 Solvent: Toluene CAS: 154862-43-8
 Concentration: 100 µg/mL PM ref: 38840 [U.R.N. A142]



m/z	Abundance	Ion Intensity %	m/z	Abundance	Ion Intensity %
77.10	12155,0	4,43	237.20	33520,0	12,20
91.10	27536,0	10,02	253.20	8022,0	2,92
103.10	17112,0	6,23	315.20	274688,0	100,00
115.10	8099,0	2,95	316.20	69744,0	25,39
119.10	15628,0	5,69	317.20	8955,0	3,26
150.10	9522,0	3,47	330.20	101832,0	37,07
165.10	10090,0	3,67	331.20	26840,0	9,77
178.10	8918,0	3,25			

Spectrometer: HEWLETT PACKARD GC/MS 6890/5973
 Inlet system: capillary GC/MS
 Scan Range: 40-700 amu
 Source temperature: 230 °C

Flow: 1.2 mL/min
 Column: DB 17-HT (30 m x 0.25 mm x 0.15 µm)
 Programme temperature: 40 °C (3 min); 20 °C/min
 (350 °C); 350 °C (20 min)