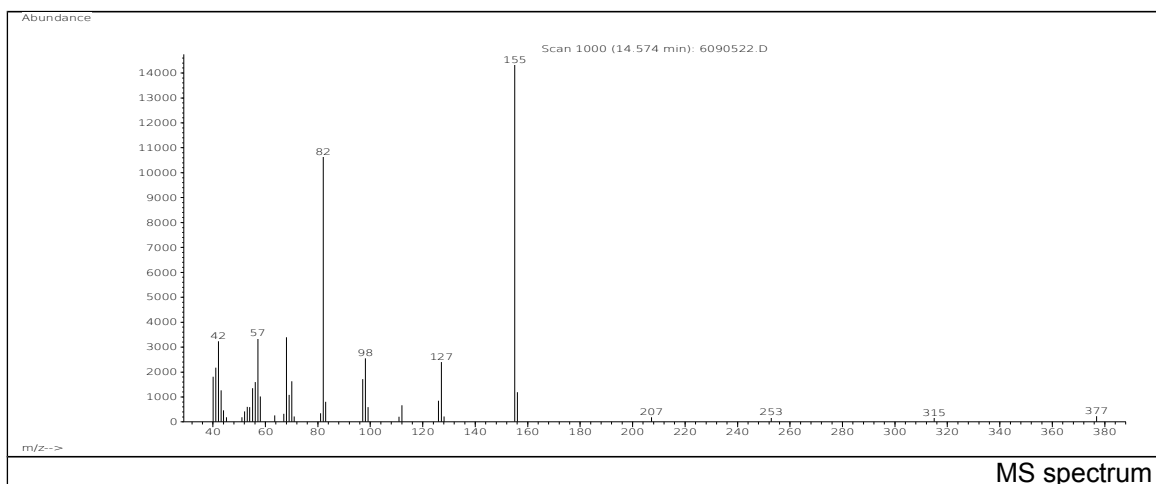
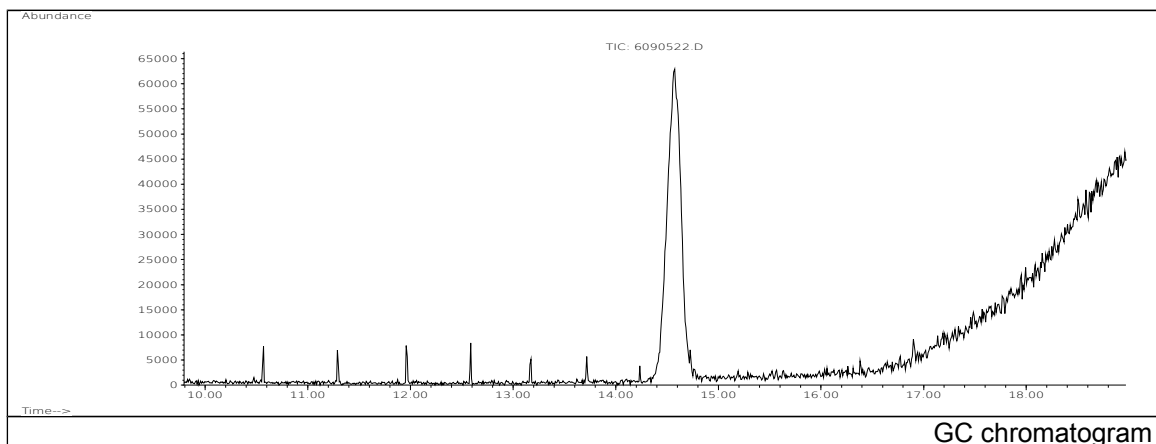


JRC CRL - FCM Database / GC-MS

Sample Name: 4-Amino-1,3-dimethyluracil
Solvent: Ethanol
Concentration: 100 µg/mL

Date: 30/08/2005
CAS: 006642-31-5
PM ref: 35160 [U.R.N. A141]



m/z	Abundance	Ion Intensity %	m/z	Abundance	Ion Intensity %
40.10	2245,0	15,12	70.10	1632,0	10,99
41.10	2472,0	16,64	82.10	9988,0	67,25
42.10	3081,0	20,74	97.10	1320,0	8,89
43.10	1198,0	8,07	98.10	2253,0	15,17
55.10	1651,0	11,12	127.10	2344,0	15,78
56.10	1161,0	7,82	155.10	14852,0	100,00
57.10	3545,0	23,87	156.00	1009,0	6,79
68.00	3172,0	21,36			

Spectrometer: HEWLETT PACKARD GC/MS 6890/5973
Inlet system: capillary GC/MS
Scan Range: 40-700 amu
Source temperature: 230 °C

Flow: 1.2 mL/min
Column: DB 17-HT (30 m x 0.25 mm x 0.15 µm)
Programme temperature: 40 °C (3 min); 20 °C/min
(350 °C); 350 °C (20 min)