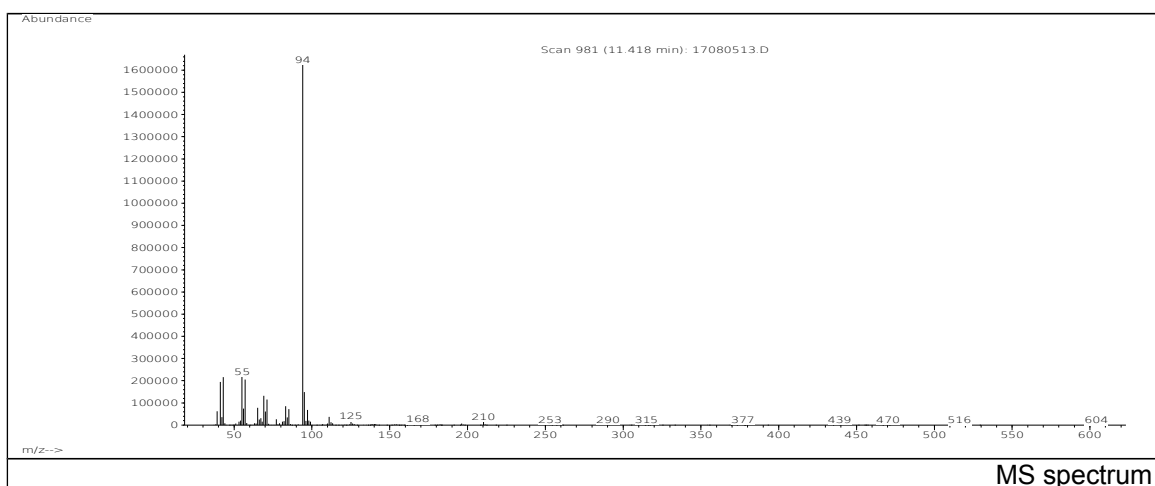
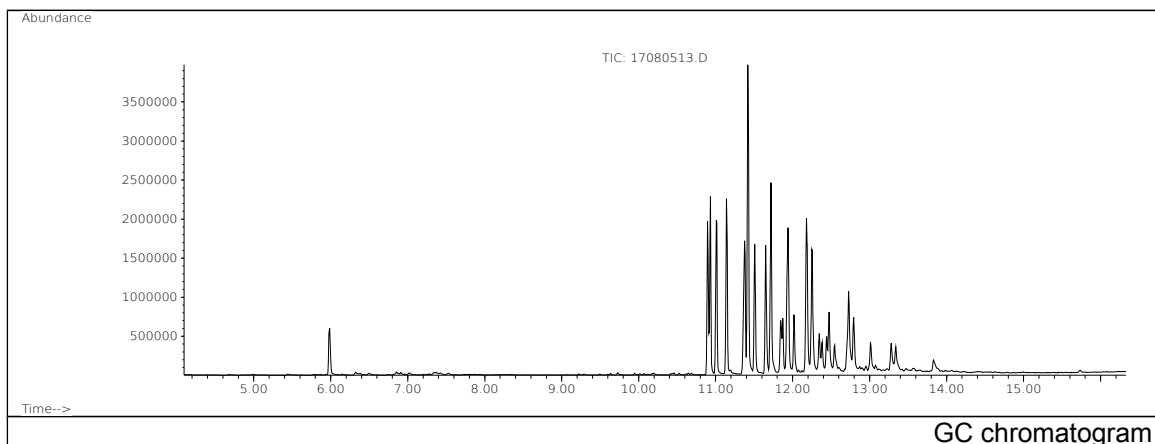


JRC CRL - FCM Database / GC-MS

Sample Name: Alkane sulfonic acid phenyl ester
Solvent: Hexane
Concentration: 100 µg/mL

Date: 30/08/2005
CAS: 091082-17-6
PM ref: 34240 [U.R.N. A121]



m/z	Abundance	Ion Intensity %	m/z	Abundance	Ion Intensity %
39.10	6234,0	4,24	70.10	5779,0	3,93
41.10	20288,0	13,80	71.10	11551,0	7,86
43.10	20880,0	14,20	83.10	8981,0	6,11
55.10	20944,0	14,25	85.10	7131,0	4,85
56.10	7286,0	4,96	94.10	147008,0	100,00
57.10	20320,0	13,82	95.10	13601,0	9,25
65.10	6947,0	4,73	97.10	6118,0	4,16
69.10	12265,0	8,34			

Spectrometer: HEWLETT PACKARD GC/MS 6890/5973
Inlet system: capillary GC/MS
Scan Range: 40-700 amu
Source temperature: 230 °C

Flow: 1.2 mL/min
Column: DB 17-HT (30 m x 0.25 mm x 0.15 µm)
Programme temperature: 40 °C (3 min); 20 °C/min
(350 °C); 350 °C (20 min)