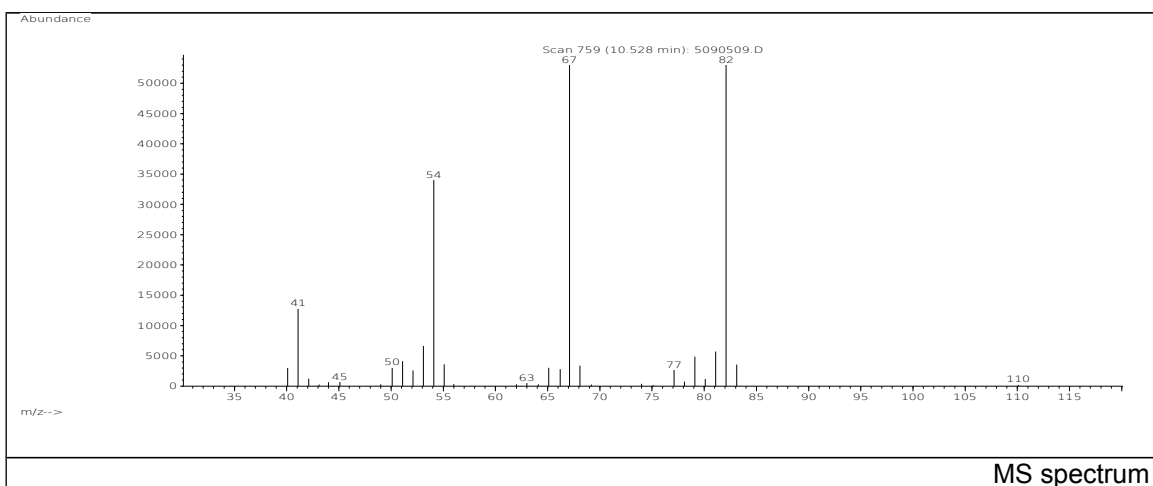
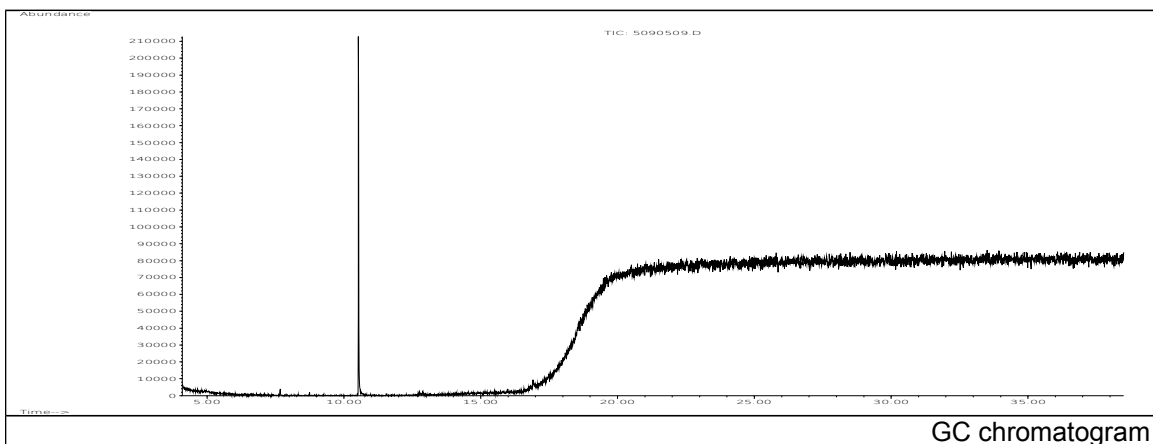


JRC CRL - FCM Database / GC-MS

Sample Name: Tricyclodecanedimethanol-bis(hexahydrophthalate)
Solvent: Hexane
Concentration: 100 µg/mL

Date: 05/09/2005
CAS: -
PM ref: 93970 [U.R.N. A115]



m/z	Abundance	Ion Intensity %	m/z	Abundance	Ion Intensity %
40.10	2996,0	5,48	66.20	2813,0	5,14
41.10	12836,0	23,46	67.10	54712,0	100,00
50.10	3126,0	5,71	68.10	3360,0	6,14
51.10	4131,0	7,55	79.10	4890,0	8,94
53.10	6636,0	12,13	81.10	5712,0	10,44
54.10	34016,0	62,17	82.10	54424,0	99,47
55.10	3620,0	6,62	83.10	3550,0	6,49
65.10	3024,0	5,53			

Spectrometer: HEWLETT PACKARD GC/MS 6890/5973
Inlet system: capillary GC/MS
Scan Range: 40-700 amu
Source temperature: 230 °C

Flow: 1.2 mL/min
Column: DB 17-HT (30 m x 0.25 mm x 0.15 µm)
Programme temperature: 40 °C (3 min); 20 °C/min
(350 °C); 350 °C (20 min)