

# JRC CRL - FCM Database / GC-MS

Sample Name: N,N'-1,6-hexanediybis(N-2,2,6,6-tetramethyl-piperidine-4-yl)formamide

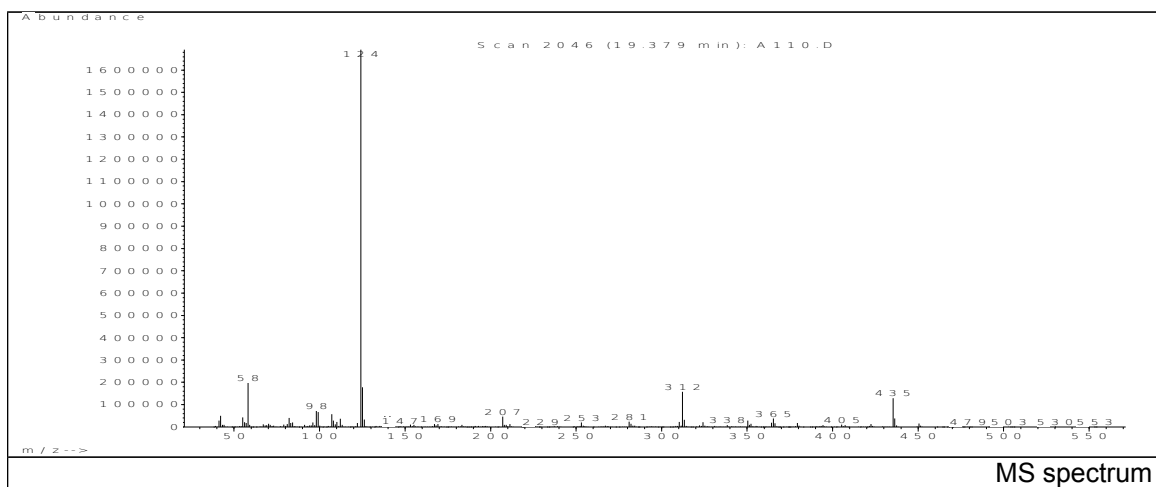
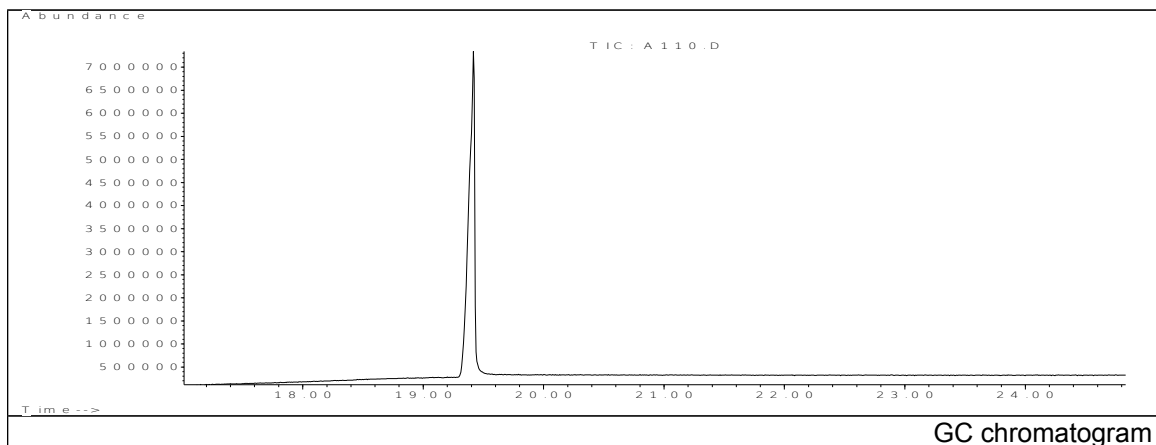
Date: 31/01/2007

Solvent: Methanol

CAS: 124172-53-8

Concentration: 100 µg/mL

PM ref: - [U.R.N. A110]



m/z	Abundance	Ion Intensity %	m/z	Abundance	Ion Intensity %
42.15	49576.0	2.93	125.15	177472.0	10.49
55.15	43280.0	2.56	138.15	49384.0	2.92
58.15	197760.0	11.69	141.15	48928.0	2.89
82.15	39920.0	2.36	207.05	46048.0	2.72
98.15	71816.0	4.25	312.25	156928.0	9.28
99.15	66720.0	3.94	365.35	37792.0	2.23
107.15	57144.0	3.38	435.35	129176.0	7.64
124.15	1691648.0	100.00	436.35	38480.0	2.27

Spectrometer: HEWLETT PACKARD GC/MS 6890/5973  
 Inlet system: capillary GC/MS  
 Scan Range: 40-700 amu  
 Source temperature: 230°C

Flow: 1.2 mL/min  
 Column: HP-5MS (30 m x 0.25 mm x 0.25 µm)  
 Programme temperature: 60°C; 15°C/min (300°C)  
 10°C/min (325°C); 6.5 min