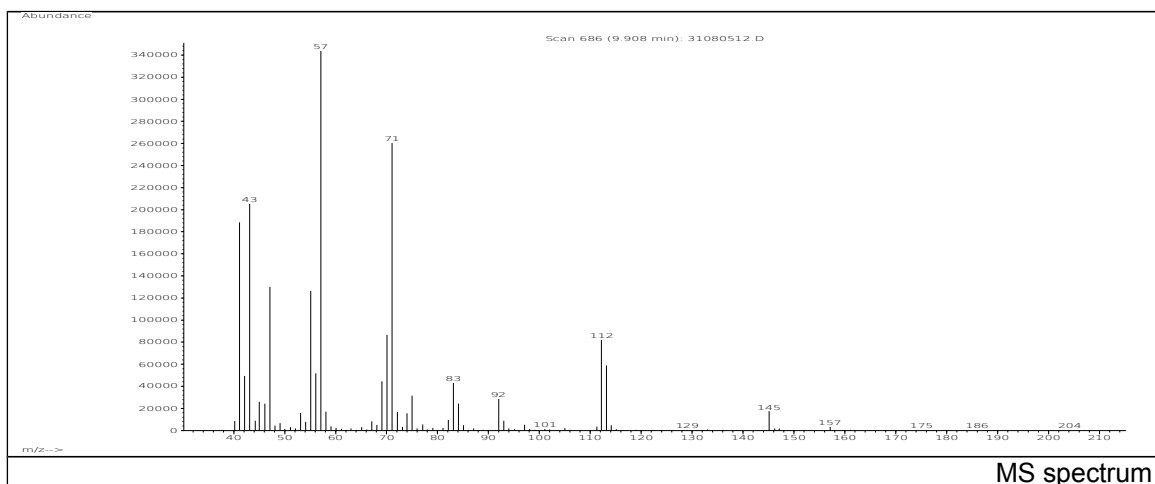
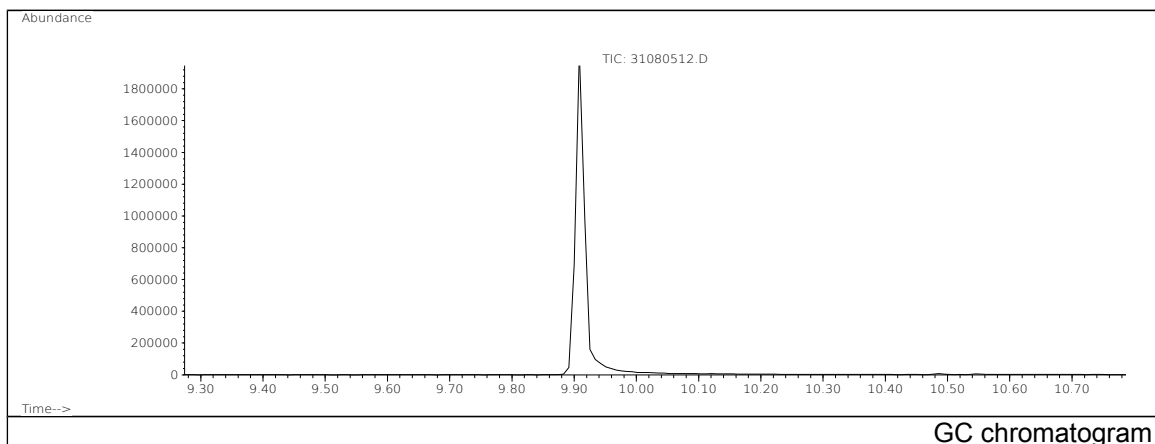


JRC CRL - FCM Database / GC-MS

Sample Name: Di-n-octyltin bis(2-ethylhexyl mercaptoacetate) + Mono-n-octyltin tris(2-ethylhexyl mercaptoacetate)
 Solvent: Hexane CAS: 015571-58-1; 027107-89-7
 Concentration: 100 µg/mL PM ref: 50320+67680 [U.R.N. A095]



m/z	Abundance	Ion Intensity %	m/z	Abundance	Ion Intensity %
41.10	188416,0	53,67	70.10	86608,0	24,67
42.10	49448,0	14,09	71.10	260992,0	74,35
43.10	205760,0	58,61	75.00	31472,0	8,97
47.10	130184,0	37,09	83.10	43544,0	12,40
55.10	126424,0	36,01	92.00	28936,0	8,24
56.10	51960,0	14,80	112.20	82000,0	23,36
57.10	351040,0	100,00	113.20	58768,0	16,74
69.10	44616,0	12,71			

Spectrometer: HEWLETT PACKARD GC/MS 6890/5973
 Inlet system: capillary GC/MS
 Scan Range: 40-700 amu
 Source temperature: 230 °C

Flow: 1.2 mL/min
 Column: DB 17-HT (30 m x 0.25 mm x 0.15 µm)
 Programme temperature: 40 °C (3 min); 20 °C/min
 (350 °C); 350 °C (20 min)