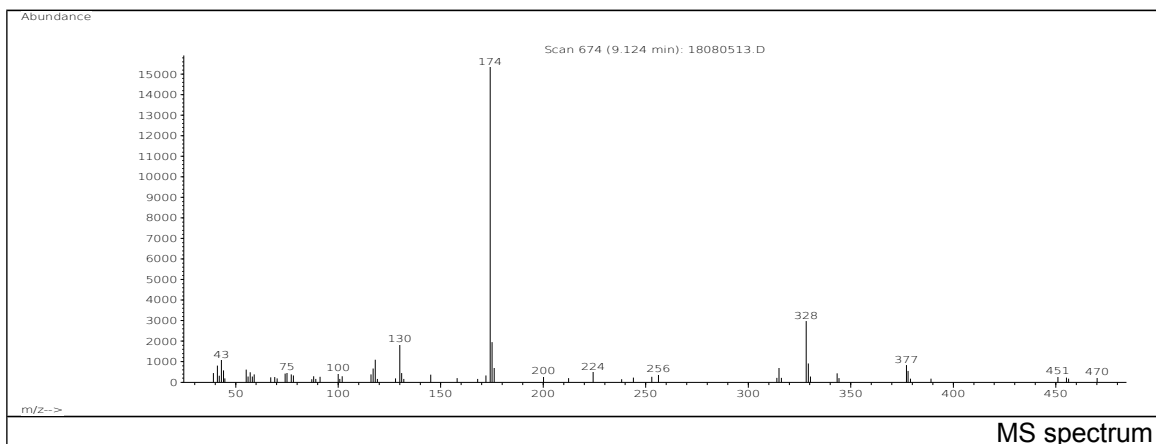


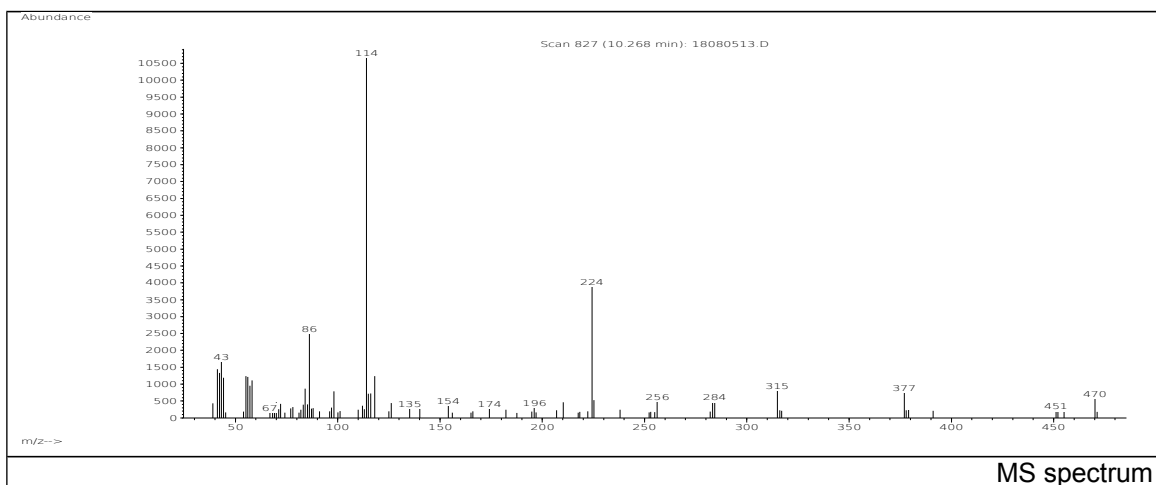
JRC CRL - FCM Database / GC-MS

Sample Name: N,N-Bis(2-hydroxyethyl)alkyl(C8-C18)amine
Solvent: Hexane
Concentration: 100 µg/mL

Date: 08/08/2005
CAS: -
PM ref: 39090 [U.R.N. A092]



m/z	Abundance	Ion Intensity %	m/z	Abundance	Ion Intensity %
41.10	770,0	8,36	175.10	1270,0	13,80
43.10	695,0	7,55	176.10	439,0	4,77
44.10	683,0	7,42	315.00	741,0	8,05
100.00	460,0	5,00	328.30	2431,0	26,41
116.90	457,0	4,96	329.10	520,0	5,65
118.10	690,0	7,50	343.30	494,0	5,37
130.10	1115,0	12,11	377.10	1025,0	11,13
174.10	9206,0	100,00			



Spectrometer: HEWLETT PACKARD GC/MS 6890/5973
Inlet system: capillary GC/MS
Scan Range: 40 - 700 amu
Source temperature: 230 °C

Flow: 1.2 mL/min
Column: DB 17-HT (30 m x 0.25 mm x 0.15 µm)
Programme temperature: 70 °C; 20 °C/min (250 °C);
10 °C/min (350 °C); 350 °C (20 min)

JRC CRL - FCM Database / GC-MS

m/z	Abundance	Ion Intensity %	m/z	Abundance	Ion Intensity %
41.10	1446,0	13,23	84.10	866,0	7,92
42.20	1334,0	12,20	86.10	2503,0	22,90
43.10	1663,0	15,22	98.10	785,0	7,18
44.10	1188,0	10,87	114.10	10930,0	100,00
55.10	1239,0	11,34	118.10	1236,0	11,31
56.00	1217,0	11,13	224.30	3887,0	35,56
57.10	954,0	8,73	314.90	801,0	7,33
58.10	1110,0	10,16			

Spectrometer: HEWLETT PACKARD GC/MS 6890/5973
Inlet system: capillary GC/MS
Scan Range: 40 - 700 amu
Source temperature: 230 °C

Flow: 1.2 mL/min
Column: DB 17-HT (30 m x 0.25 mm x 0.15 µm)
Programme temperature: 70 °C; 20 °C/min (250 °C);
10 °C/min (350 °C); 350 °C (20 min)