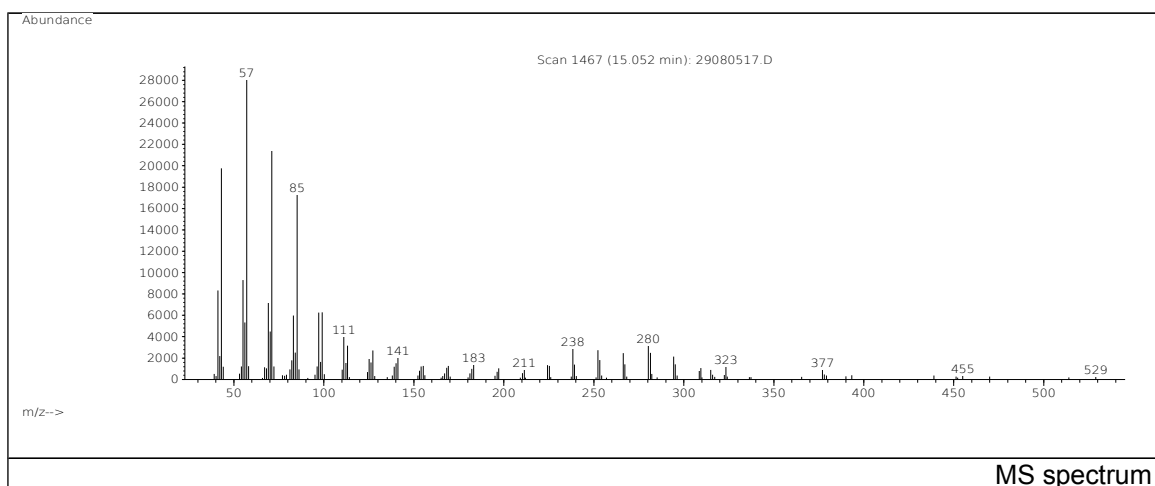
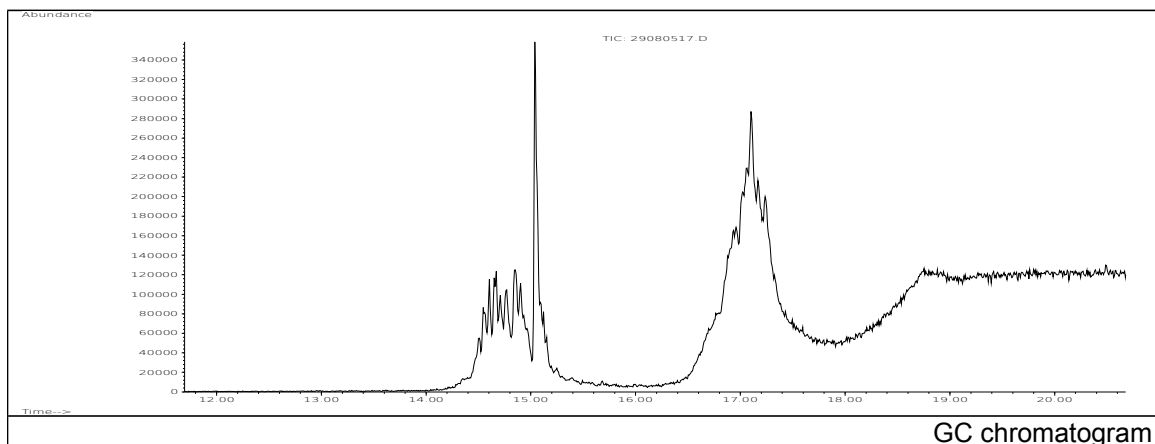


JRC CRL - FCM Database / GC-MS

Sample Name: Polyolefins
Solvent: Hexane
Concentration: 100 µg/mL

Date: 29/08/2005
CAS: -
PM ref: 80550 [U.R.N. A090]

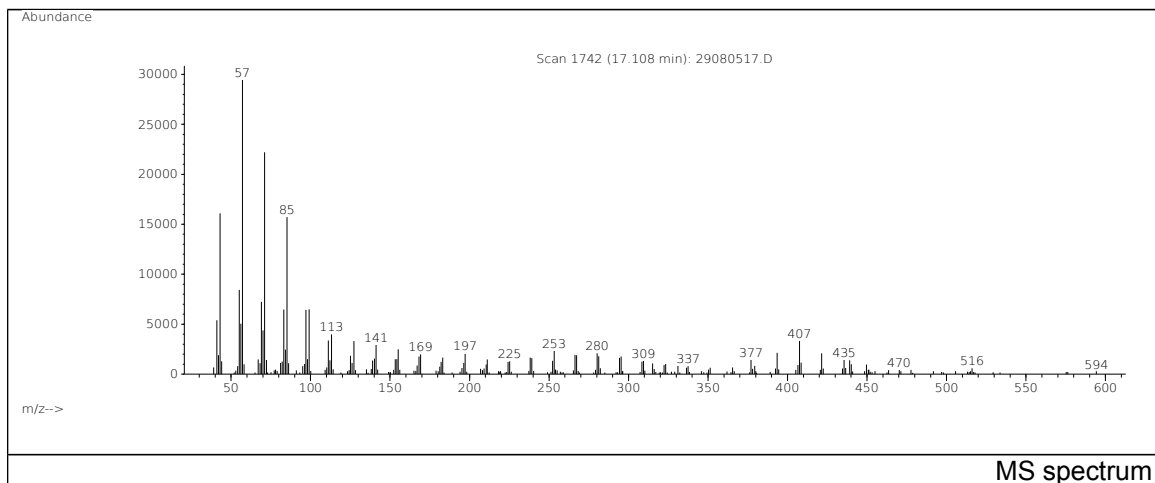


m/z	Abundance	Ion Intensity %	m/z	Abundance	Ion Intensity %
41.10	12079,0	28,84	83.10	8078,0	19,28
43.10	26456,0	63,16	85.10	23208,0	55,40
55.10	13653,0	32,59	97.20	8831,0	21,08
56.10	7167,0	17,11	99.10	7231,0	17,26
57.10	41888,0	100,00	111.10	5272,0	12,59
69.10	9579,0	22,87	113.20	4804,0	11,47
70.10	6106,0	14,58	252.30	5700,0	13,61
71.10	30224,0	72,15			

Spectrometer: HEWLETT PACKARD GC/MS 6890/5973
Inlet system: capillary GC/MS
Scan Range: 40-700 amu
Source temperature: 230 °C

Flow: 1.2 mL/min
Column: DB 17-HT (30 m x 0.25 mm x 0.15 µm)
Programme temperature: 40 °C (3 min); 20 °C/min
(350 °C); 350 °C (20 min)

JRC CRL - FCM Database / GC-MS



m/z	Abundance	Ion Intensity %	m/z	Abundance	Ion Intensity %
41.10	13823,0	28,16	83.10	9241,0	18,83
43.10	30344,0	61,82	85.10	26872,0	54,74
55.10	15865,0	32,32	97.10	9640,0	19,64
56.20	8902,0	18,13	99.10	8170,0	16,64
57.10	49088,0	100,00	111.10	6112,0	12,45
69.10	11402,0	23,23	252.30	6516,0	13,27
70.10	7172,0	14,61	280.30	6647,0	13,54
71.10	32624,0	66,46			

Spectrometer: HEWLETT PACKARD GC/MS 6890/5973
 Inlet system: capillary GC/MS
 Scan Range: 40-700 amu
 Source temperature: 230 °C

Flow: 1.2 mL/min
 Column: DB 17-HT (30 m x 0.25 mm x 0.15 µm)
 Programme temperature: 40 °C (3 min); 20 °C/min
 (350 °C); 350 °C (20 min)