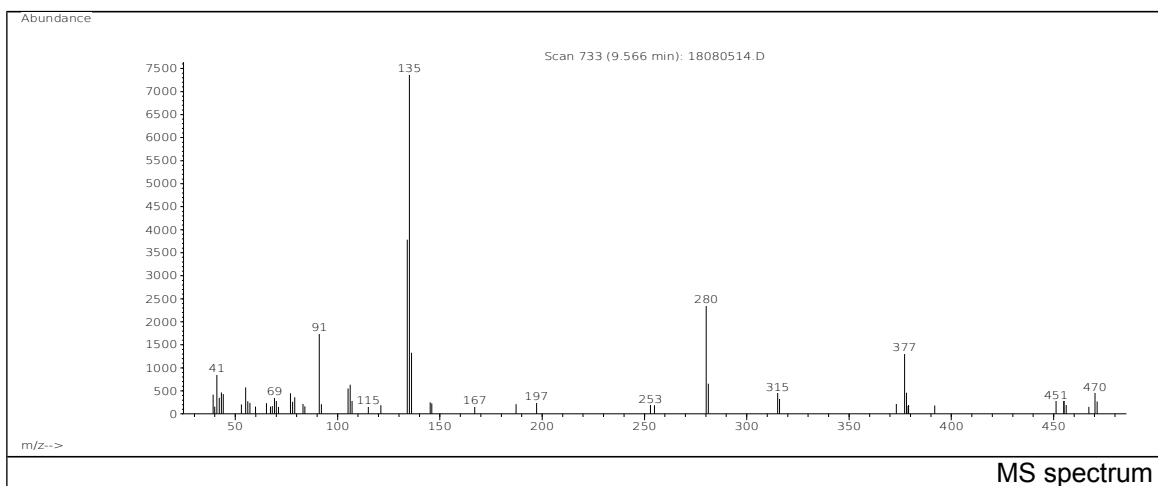
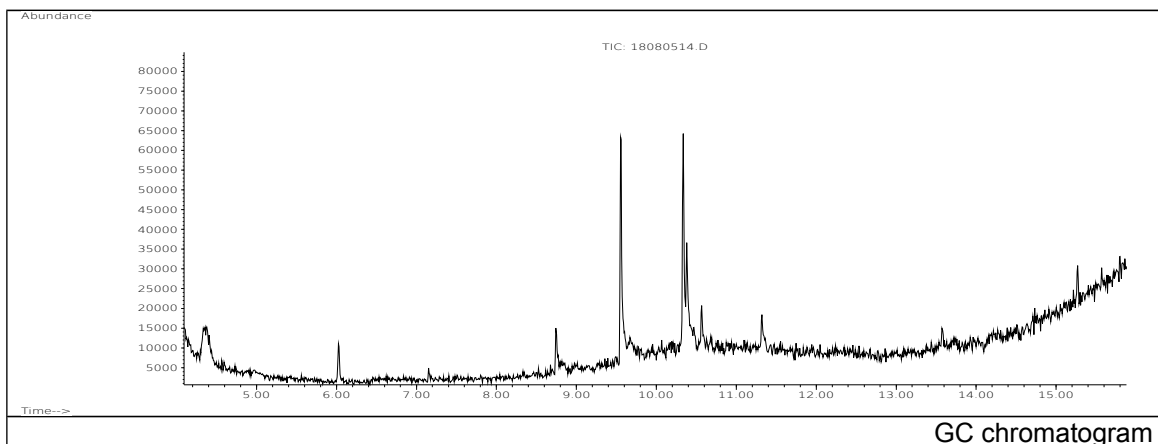


JRC CRL - FCM Database / GC-MS

Sample Name: 2,4-Bis(octylthiomethyl)-6-methylphenol
Solvent: Hexane
Concentration: 100 µg/mL

Date: 08/08/2005
CAS: 110553-27-0
PM ref: 40020 [U.R.N. A082]



m/z	Abundance	Ion Intensity %	m/z	Abundance	Ion Intensity %
41.00	1327,0	7,79	134.10	9330,0	54,78
43.10	1216,0	7,14	135.10	17032,0	100,00
55.20	896,0	5,26	136.10	3756,0	22,05
77.10	1098,0	6,45	280.20	4342,0	25,49
79.10	926,0	5,44	281.20	1000,0	5,87
91.10	3626,0	21,29	315.10	1009,0	5,92
105.20	1008,0	5,92	377.10	1027,0	6,03
106.10	1186,0	6,96			

Spectrometer: HEWLETT PACKARD GC/MS 6890/5973
Inlet system: capillary GC/MS
Scan Range: 40 - 700 amu
Source temperature: 230 °C

Flow: 1.2 mL/min
Column: DB 17-HT (30 m x 0.25 mm x 0.15 µm)
Programme temperature: 70 °C; 20 °C/min (250 °C);
10 °C/min (350 °C); 350 °C (20 min)