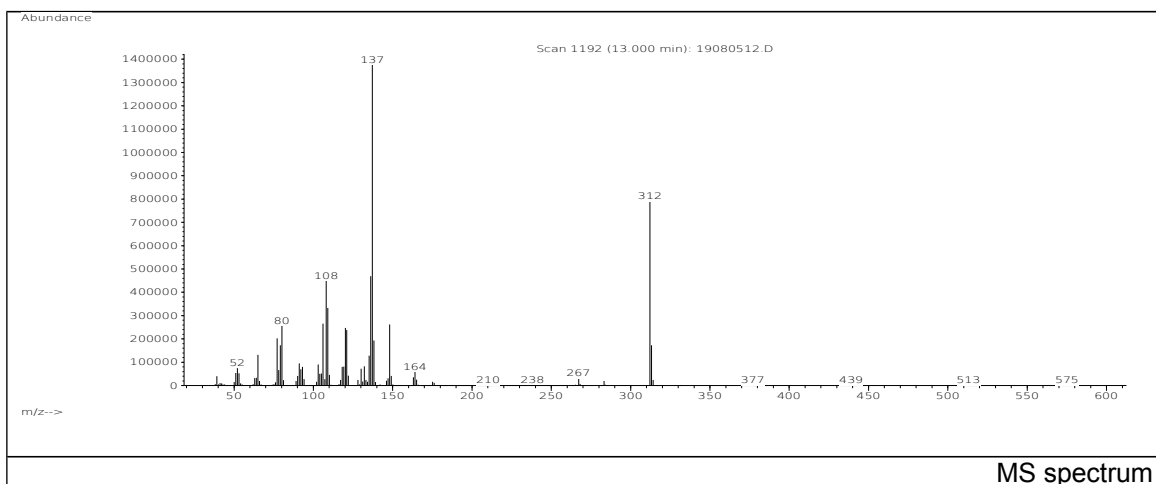
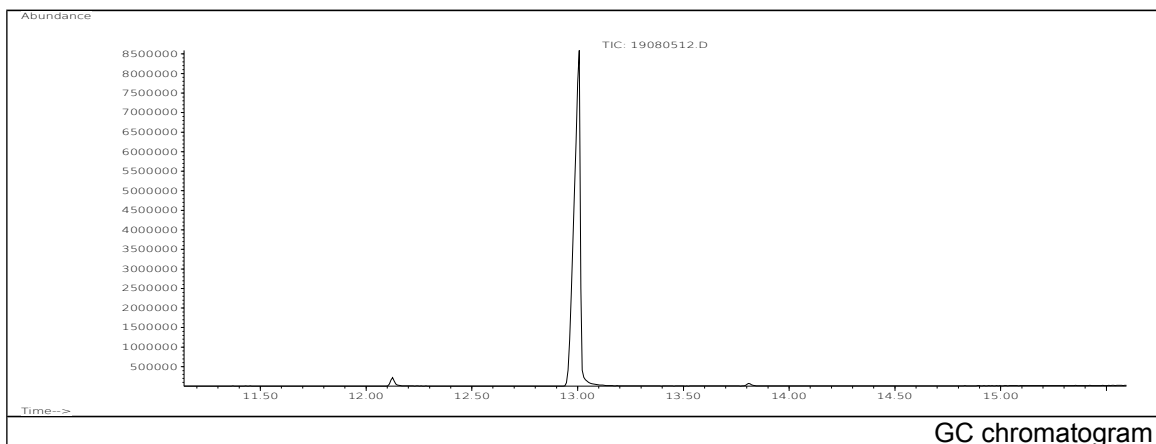


JRC CRL - FCM Database / GC-MS

Sample Name: 2-Ethoxy-2'-ethyloxanilide
Solvent: Dichloromethane
Concentration: 100 µg/mL

Date: 08/08/2005
CAS: 023949-66-8
PM ref: 53200 [U.R.N. A081]



m/z	Abundance	Ion Intensity %	m/z	Abundance	Ion Intensity %
65.10	131456,0	9,25	121.10	237952,0	16,74
77.10	202496,0	14,24	136.10	468928,0	32,98
79.10	172480,0	12,13	137.10	1421824,0	100,00
80.10	256000,0	18,01	138.10	193216,0	13,59
106.10	264832,0	18,63	148.10	262144,0	18,44
108.10	448192,0	31,52	312.20	789888,0	55,55
109.10	332928,0	23,42	313.20	172352,0	12,12
120.10	246976,0	17,37			

Spectrometer: HEWLETT PACKARD GC/MS 6890/5973
Inlet system: capillary GC/MS
Scan Range: 40 - 700 amu
Source temperature: 230 °C

Flow: 1.2 mL/min
Column: DB 17-HT (30 m x 0.25 mm x 0.15 µm)
Programme temperature: 70 °C; 20 °C/min (250 °C);
10 °C/min (350 °C); 350 °C (20 min)