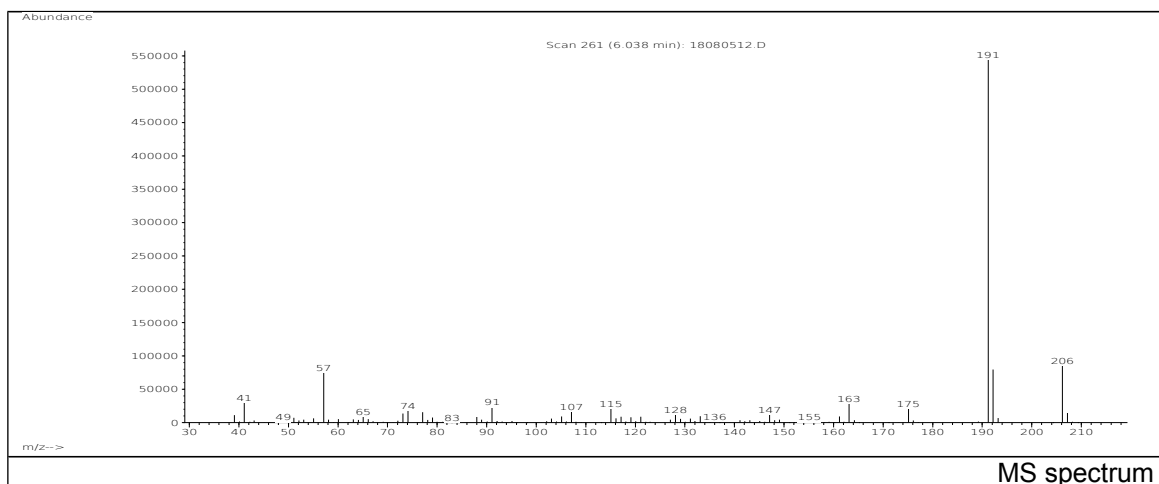
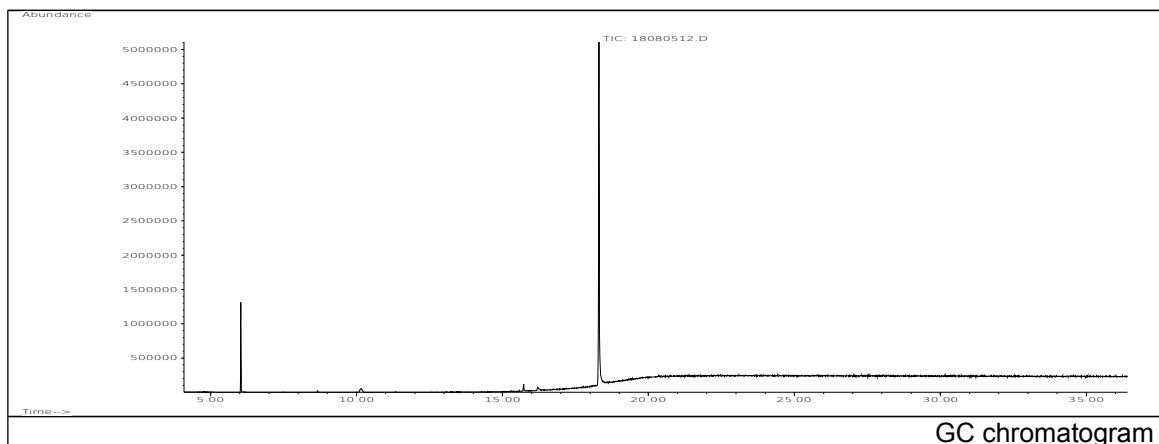


JRC CRL - FCM Database / GC-MS

Sample Name: Bis(2,4-di-tert-butylphenyl)pentaerythritol diphosphate
Solvent: Dichloromethane
Concentration: 100 µg/mL

Date: 08/08/2005
CAS: 026741-53-7
PM ref: 38820 [U.R.N. A079]

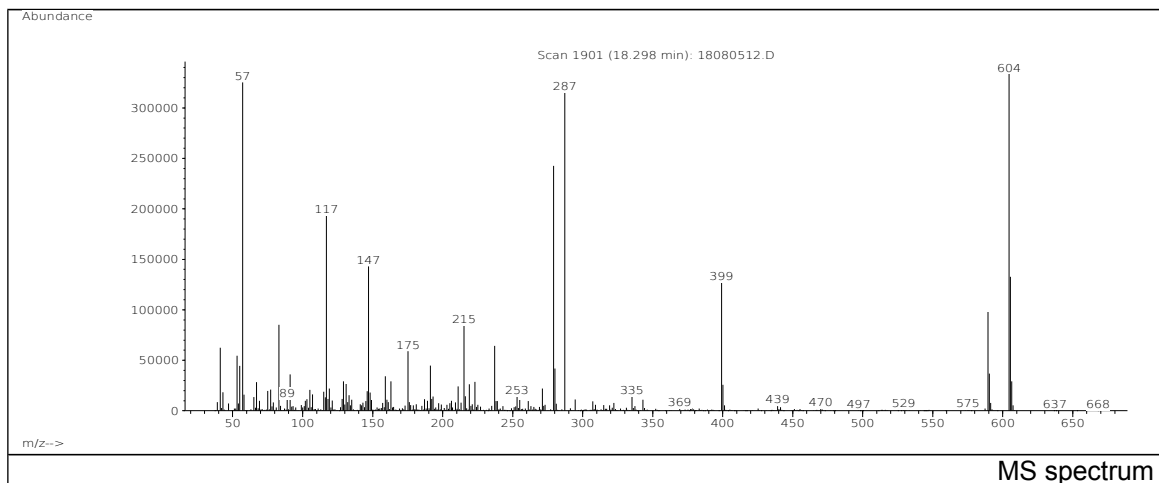


m/z	Abundance	Ion Intensity %	m/z	Abundance	Ion Intensity %
41.10	29856,0	5,35	147.10	11786,0	2,11
57.10	74648,0	13,38	163.10	28680,0	5,14
73.10	13631,0	2,44	175.10	20576,0	3,69
74.10	18136,0	3,25	191.20	557888,0	100,00
77.10	15590,0	2,79	192.20	79800,0	14,30
91.10	23008,0	4,12	206.20	85392,0	15,31
107.10	16091,0	2,88	207.20	14401,0	2,58
115.10	20584,0	3,69			

Spectrometer: HEWLETT PACKARD GC/MS 6890/5973
Inlet system: capillary GC/MS
Scan Range: 40 - 700 amu
Source temperature: 230 °C

Flow: 1.2 mL/min
Column: DB 17-HT (30 m x 0.25 mm x 0.15 µm)
Programme temperature: 70 °C; 20 °C/min (250 °C);
10 °C/min (350 °C); 350 °C (20 min)

JRC CRL - FCM Database / GC-MS



m/z	Abundance	Ion Intensity %	m/z	Abundance	Ion Intensity %
41.10	62472,0	11,20	237.10	64368,0	11,54
53.10	54648,0	9,80	279.20	242688,0	43,50
57.10	325312,0	58,31	287.20	315072,0	56,48
83.10	85056,0	15,25	399.20	126800,0	22,73
117.00	193280,0	34,64	589.40	97736,0	17,52
147.10	143040,0	25,64	604.40	345984,0	62,02
175.20	59016,0	10,58	605.40	132608,0	23,77
215.20	84320,0	15,11			

Spectrometer: HEWLETT PACKARD GC/MS 6890/5973
 Inlet system: capillary GC/MS
 Scan Range: 40 - 700 amu
 Source temperature: 230 °C

Flow: 1.2 mL/min
 Column: DB 17-HT (30 m x 0.25 mm x 0.15 µm)
 Programme temperature: 70 °C; 20 °C/min (250 °C);
 10 °C/min (350 °C); 350 °C (20 min)