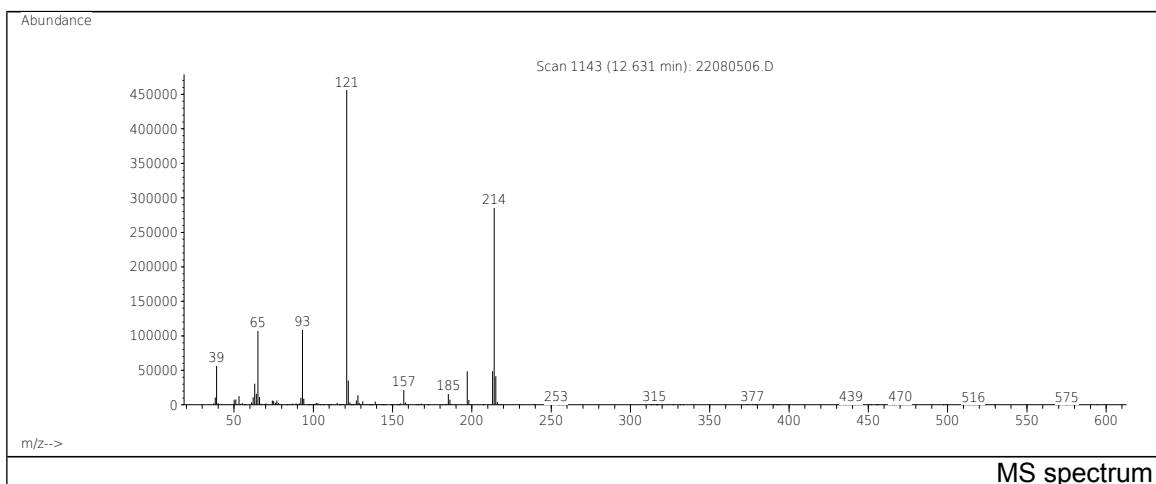
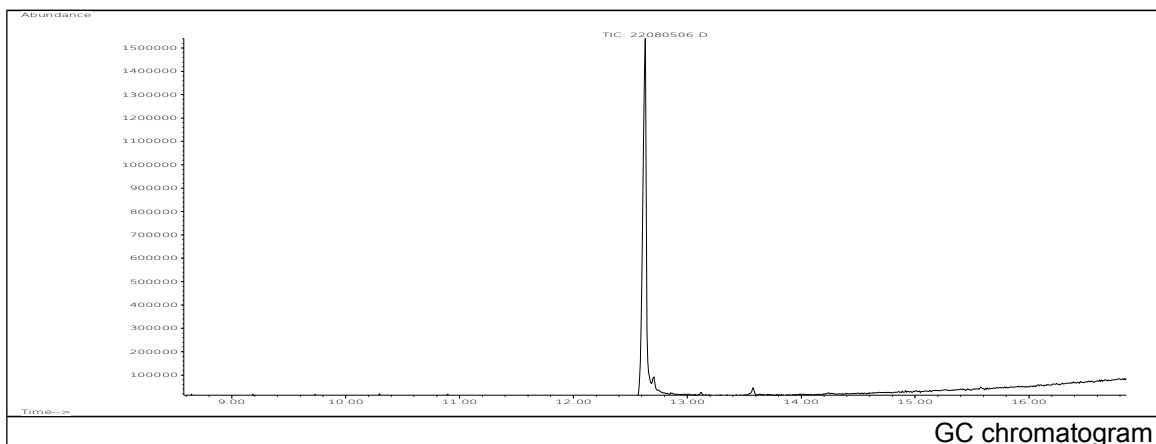


JRC CRL - FCM Database / GC-MS

Sample Name: 4,4'-Dihydroxybenzophenone
Solvent: Tert-butylmethyl ether
Concentration: 100 µg/mL

Date: 08/08/2005
CAS: 000611-99-4
PM ref: 48720 [U.R.N. A074]



m/z	Abundance	Ion Intensity %	m/z	Abundance	Ion Intensity %
39.10	51520,0	12,50	128.10	12277,0	2,98
62.10	11024,0	2,68	157.10	18008,0	4,37
63.10	24872,0	6,04	185.10	14329,0	3,48
64.10	13958,0	3,39	197.10	40664,0	9,87
65.10	94560,0	22,95	213.10	41144,0	9,98
93.10	95664,0	23,21	214.10	249728,0	60,60
121.10	412096,0	100,00	215.10	35064,0	8,51
122.10	33576,0	8,15			

Spectrometer: HEWLETT PACKARD GC/MS 6890/5973
Inlet system: capillary GC/MS
Scan Range: 40 - 700 amu
Source temperature: 230 °C

Flow: 1.2 mL/min
Column: DB 17-HT (30 m x 0.25 mm x 0.15 µm)
Programme temperature: 70 °C; 20 °C/min (250 °C);
10 °C/min (350 °C); 350 °C (20 min)