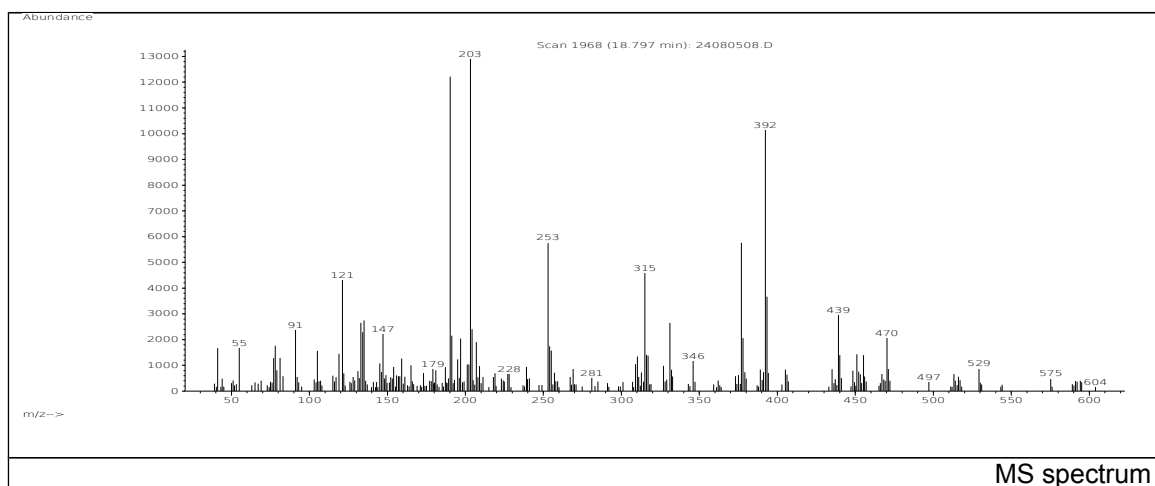
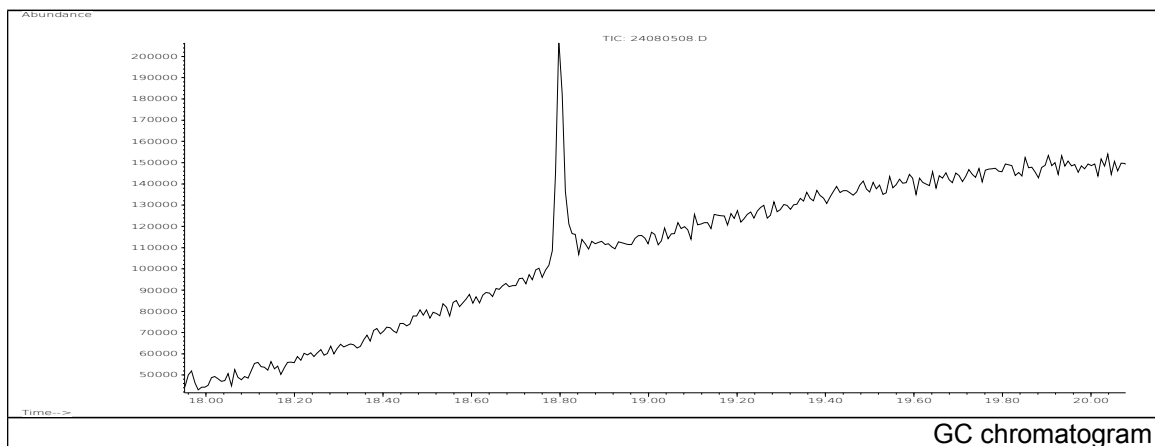


JRC CRL - FCM Database / GC-MS

Sample Name: 2,2'-Methylene bis(4-methyl-6-cyclohexylphenol)
Solvent: Methanol
Concentration: 100 µg/mL

Date: 24/08/2005
CAS: 004066-02-8
PM ref: 66560 [U.R.N. A070]



m/z	Abundance	Ion Intensity %	m/z	Abundance	Ion Intensity %
91.10	2377,0	17,93	253.00	5781,0	43,61
121.10	4338,0	32,73	315.10	4587,0	34,61
133.00	2648,0	19,98	331.10	2655,0	20,03
134.10	2292,0	17,29	377.00	5756,0	43,43
135.10	2741,0	20,68	392.30	10150,0	76,57
190.20	12217,0	92,17	393.30	3664,0	27,64
203.20	13255,0	100,00	439.20	2961,0	22,34
204.20	2405,0	18,14			

Spectrometer: HEWLETT PACKARD GC/MS 6890/5973
Inlet system: capillary GC/MS
Scan Range: 40-700 amu
Source temperature: 230 °C

Flow: 1.2 mL/min
Column: DB 17-HT (30 m x 0.25 mm x 0.15 µm)
Programme temperature: 40 °C (3 min); 20 °C/min
(350 °C); 350 °C (20 min)