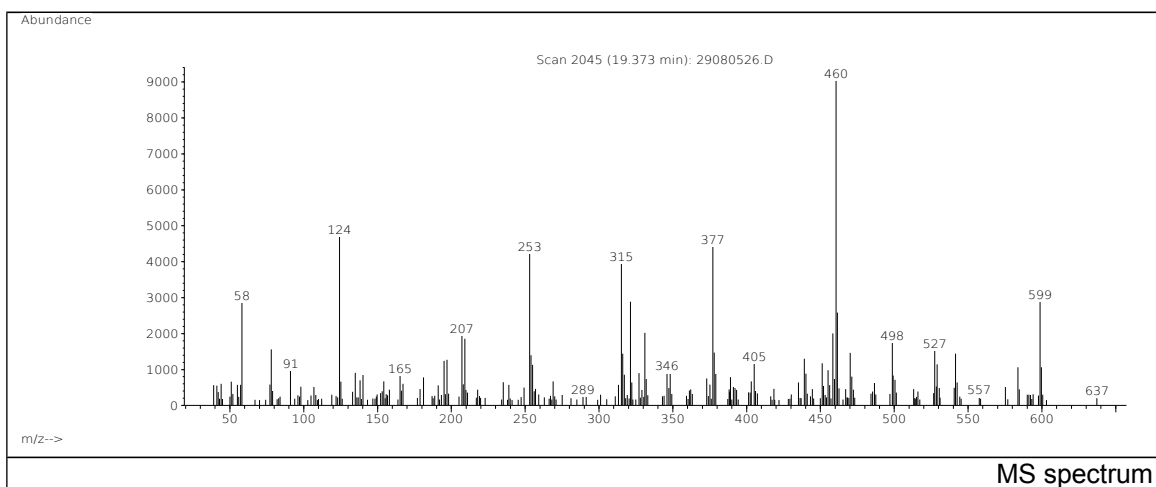
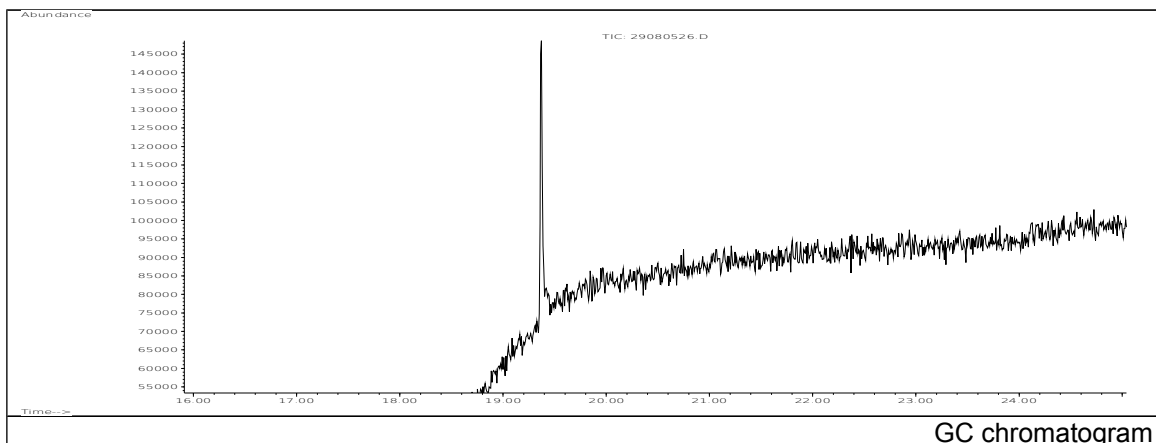


JRC CRL - FCM Database / GC-MS

Sample Name: Poly[6-[(1,1,3,3-tetramethylbutyl)amino]-1,3,5-triazine-2,4-diyl]-[(2,2,6,6-tetramethyl-4-piperidyl)imino]hexamethylene[2,2,6,6-tetramethyl-4-piperidyl)imino]
 Solvent: Hexane CAS: 071878-19-8
 Concentration: 100 µg/mL PM ref: 81200 [U.R.N. A066]



m/z	Abundance	Ion Intensity %	m/z	Abundance	Ion Intensity %
58.10	2866,0	30,45	331.10	2023,0	21,49
78.10	1562,0	16,59	377.10	4411,0	46,86
124.20	4691,0	49,84	458.40	2009,0	21,34
207.10	1944,0	20,65	460.50	9413,0	100,00
209.20	1854,0	19,70	461.50	2584,0	27,45
253.00	4231,0	44,95	498.60	1745,0	18,54
315.10	3948,0	41,94	598.70	2878,0	30,57
321.30	2888,0	30,68			

Spectrometer: HEWLETT PACKARD GC/MS 6890/5973
 Inlet system: capillary GC/MS
 Scan Range: 40-700 amu
 Source temperature: 230 °C

Flow: 1.2 mL/min
 Column: DB 17-HT (30 m x 0.25 mm x 0.15 µm)
 Programme temperature: 40 °C (3 min); 20 °C/min
 (350 °C); 350 °C (20 min)