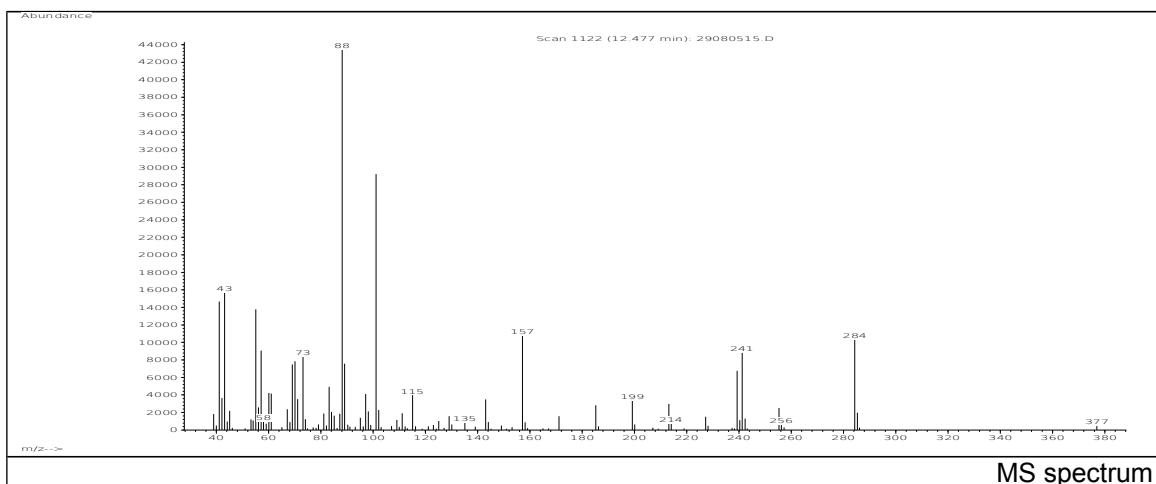
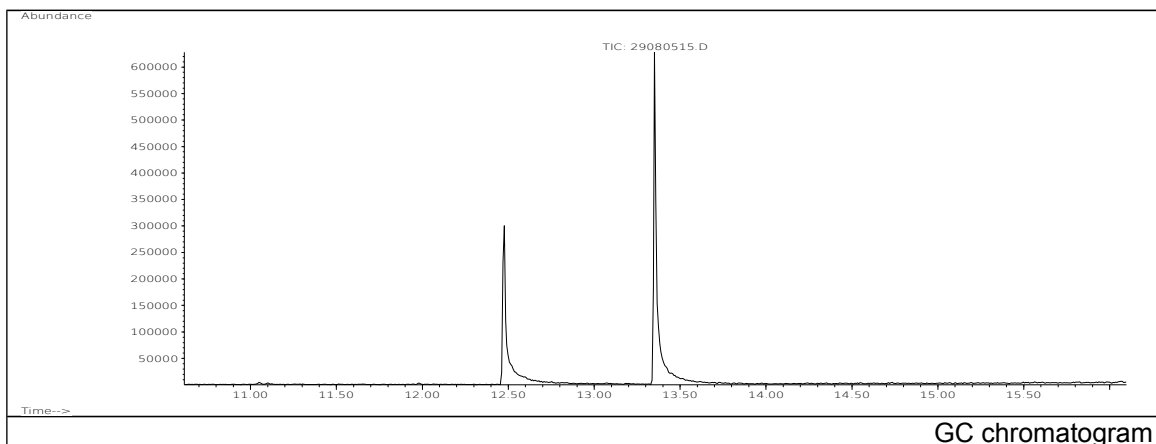


JRC CRL - FCM Database / GC-MS

Sample Name: Sorbitan monostearate
Solvent: Ethanol
Concentration: 100 µg/mL

Date: 29/08/2005
CAS: 001338-41-6
PM ref: 87840 [U.R.N. A049]

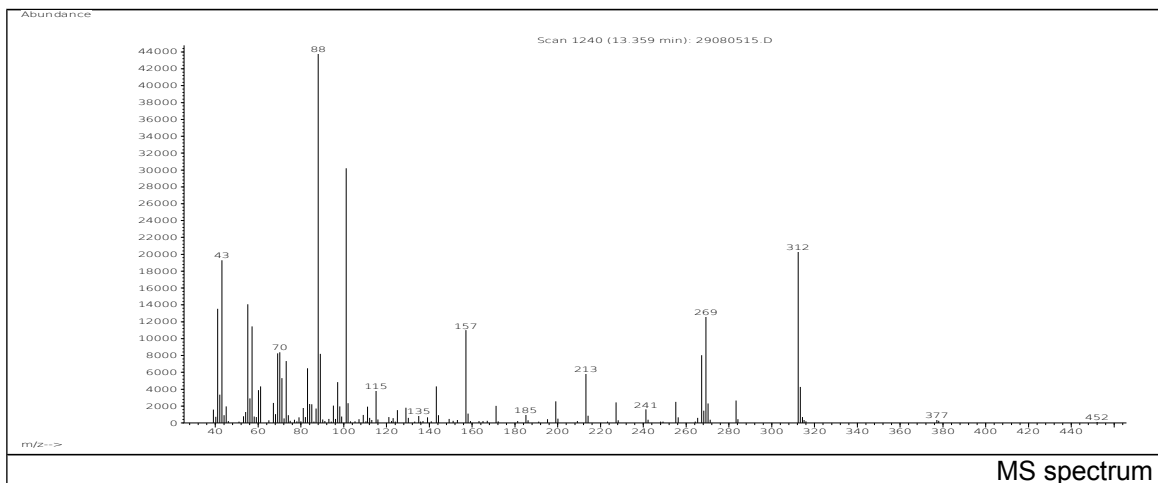


m/z	Abundance	Ion Intensity %	m/z	Abundance	Ion Intensity %
41.10	14679,0	33,14	88.10	44296,0	100,00
43.10	15662,0	35,36	89.10	7590,0	17,13
55.10	13794,0	31,14	101.10	29232,0	65,99
57.10	9060,0	20,45	157.10	10805,0	24,39
69.10	7477,0	16,88	239.30	6742,0	15,22
70.10	7844,0	17,71	241.20	8872,0	20,03
73.10	8383,0	18,92	284.30	10369,0	23,41
83.10	4940,0	11,15			

Spectrometer: HEWLETT PACKARD GC/MS 6890/5973
Inlet system: capillary GC/MS
Scan Range: 40-700 amu
Source temperature: 230 °C

Flow: 1.2 mL/min
Column: DB 17-HT (30 m x 0.25 mm x 0.15 µm)
Programme temperature: 40 °C (3 min); 20 °C/min
(350 °C); 350 °C (20 min)

JRC CRL - FCM Database / GC-MS



m/z	Abundance	Ion Intensity %	m/z	Abundance	Ion Intensity %
41.10	13540,0	30,23	88.10	44792,0	100,00
43.10	19296,0	43,08	89.10	8190,0	18,28
55.10	14073,0	31,42	101.10	30192,0	67,40
57.10	11461,0	25,59	157.10	11004,0	24,57
69.10	8272,0	18,47	267.30	8037,0	17,94
70.10	8396,0	18,74	269.30	12602,0	28,13
73.10	7353,0	16,42	312.30	20352,0	45,44
83.10	6494,0	14,50			

Spectrometer: HEWLETT PACKARD GC/MS 6890/5973
 Inlet system: capillary GC/MS
 Scan Range: 40-700 amu
 Source temperature: 230 °C

Flow: 1.2 mL/min
 Column: DB 17-HT (30 m x 0.25 mm x 0.15 µm)
 Programme temperature: 40 °C (3 min); 20 °C/min
 (350 °C); 350 °C (20 min)