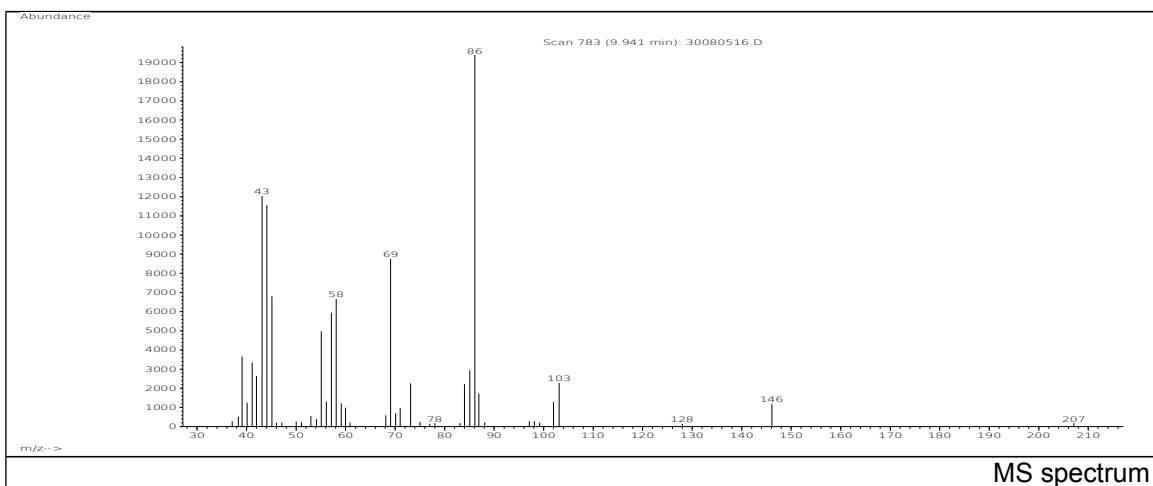
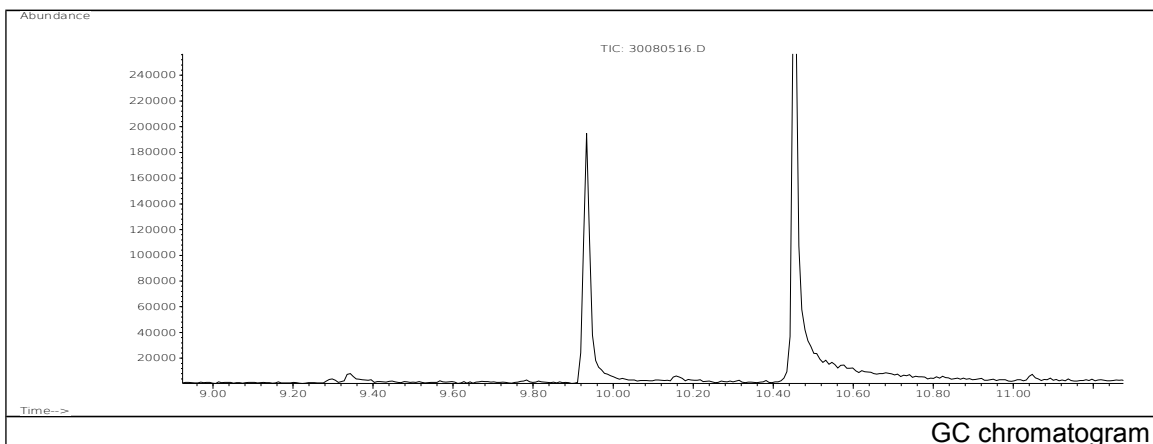


JRC CRL - FCM Database / GC-MS

Sample Name: Sorbitan monolaurate
Solvent: Ethanol
Concentration: 100 µg/mL

Date: 29/08/2005
CAS: 001338-39-2
PM ref: 87600 [U.R.N. A047]

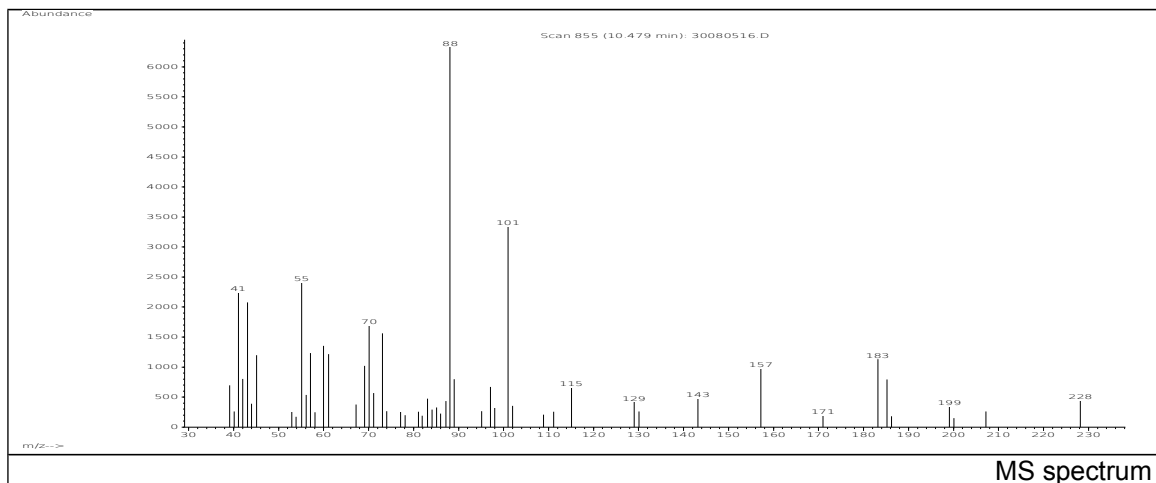


m/z	Abundance	Ion Intensity %	m/z	Abundance	Ion Intensity %
39.10	5548,0	15,99	58.10	11063,0	31,88
41.10	5429,0	15,64	69.10	15832,0	45,62
42.10	4579,0	13,19	73.00	3276,0	9,44
43.10	21704,0	62,54	84.00	3720,0	10,72
44.10	20224,0	58,28	85.10	4867,0	14,02
45.10	13690,0	39,45	86.10	34704,0	100,00
55.10	7845,0	22,61	103.10	3913,0	11,28
57.10	10821,0	31,18			

Spectrometer: HEWLETT PACKARD GC/MS 6890/5973
Inlet system: capillary GC/MS
Scan Range: 40-700 amu
Source temperature: 230 °C

Flow: 1.2 mL/min
Column: DB 17-HT (30 m x 0.25 mm x 0.15 µm)
Programme temperature: 40 °C (3 min); 20 °C/min
(350 °C); 350 °C (20 min)

JRC CRL - FCM Database / GC-MS



m/z	Abundance	Ion Intensity %	m/z	Abundance	Ion Intensity %
41.10	17624,0	37,35	73.10	10591,0	22,45
43.10	14716,0	31,19	88.10	47184,0	100,00
55.10	15008,0	31,81	89.10	5827,0	12,35
57.10	7831,0	16,60	101.10	25944,0	54,98
60.10	6433,0	13,63	157.10	9706,0	20,57
61.10	5732,0	12,15	183.20	9730,0	20,62
69.20	6474,0	13,72	185.20	8017,0	16,99
70.10	10483,0	22,22			

Spectrometer: HEWLETT PACKARD GC/MS 6890/5973
 Inlet system: capillary GC/MS
 Scan Range: 40-700 amu
 Source temperature: 230 °C

Flow: 1.2 mL/min
 Column: DB 17-HT (30 m x 0.25 mm x 0.15 µm)
 Programme temperature: 40 °C (3 min); 20 °C/min
 (350 °C); 350 °C (20 min)