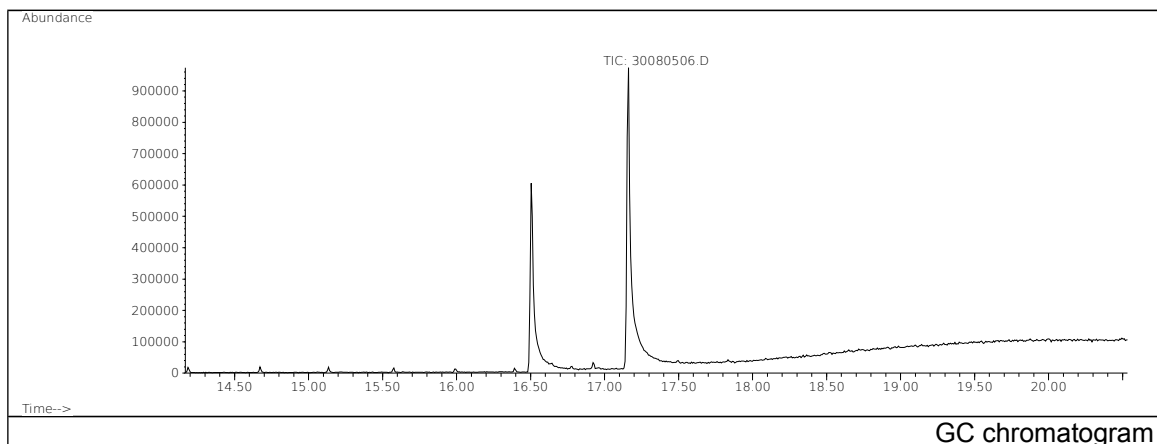


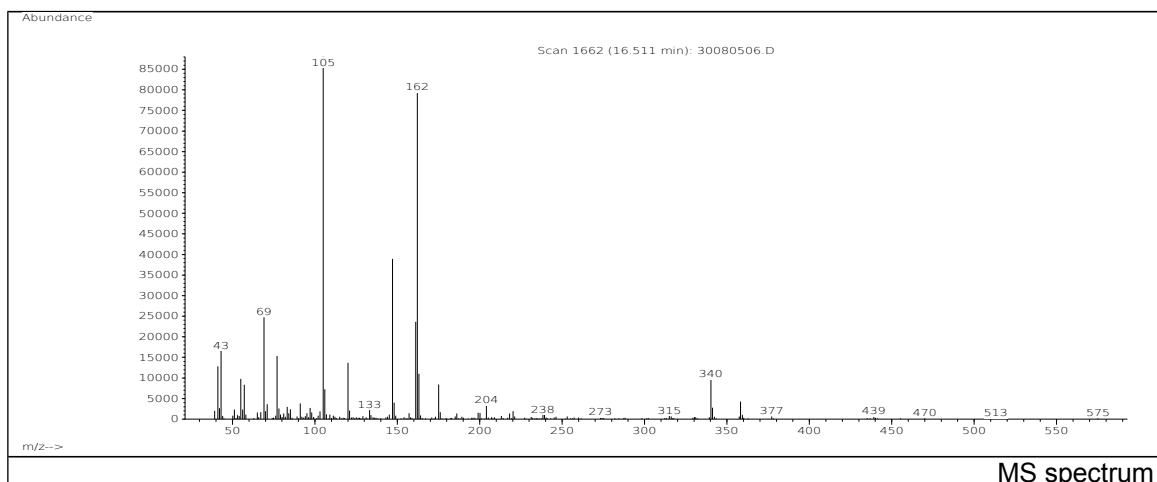
# JRC CRL - FCM Database / GC-MS

Sample Name: Stearoylbenzoylmethane  
Solvent: Hexane  
Concentration: 100 µg/mL

Date: 30/08/2005  
CAS: 058446-52-9  
PM ref: 90720 [U.R.N. A045]



GC chromatogram



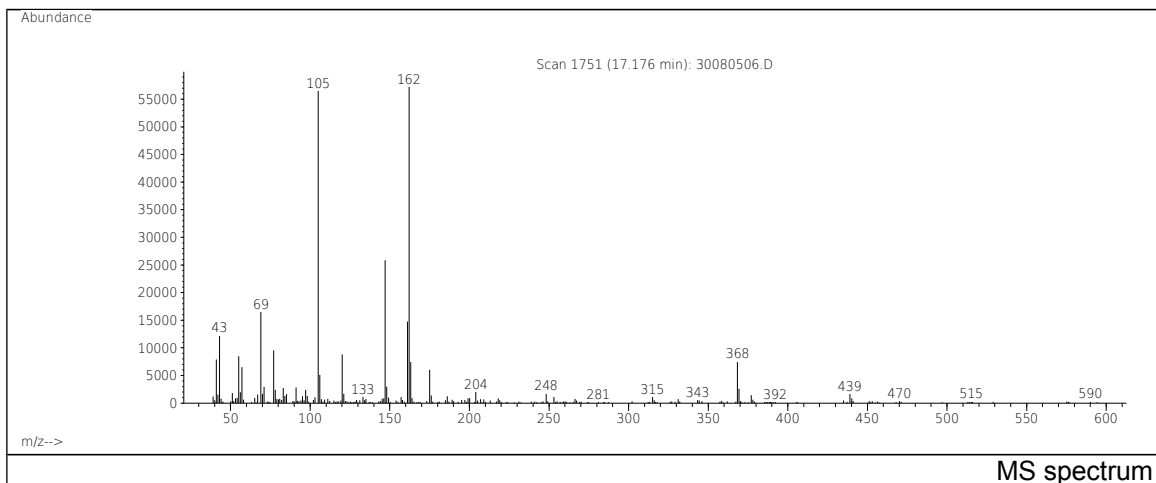
MS spectrum

m/z	Abundance	Ion Intensity %	m/z	Abundance	Ion Intensity %
41.10	16253,0	13,96	120.10	15141,0	13,01
43.10	22544,0	19,37	147.10	45040,0	38,69
55.10	14657,0	12,59	161.10	25768,0	22,14
57.10	11352,0	9,75	162.10	96608,0	82,99
69.10	30168,0	25,92	163.10	13140,0	11,29
77.10	21568,0	18,53	175.10	9206,0	7,91
105.10	116408,0	100,00	340.30	7500,0	6,44
106.10	9486,0	8,15			

Spectrometer: HEWLETT PACKARD GC/MS 6890/5973  
Inlet system: capillary GC/MS  
Scan Range: 40-700 amu  
Source temperature: 230 °C

Flow: 1.2 mL/min  
Column: DB 17-HT (30 m x 0.25 mm x 0.15 µm)  
Programme temperature: 40 °C (3 min); 20 °C/min  
(350 °C); 350 °C (20 min)

# JRC CRL - FCM Database / GC-MS



m/z	Abundance	Ion Intensity %	m/z	Abundance	Ion Intensity %
41.10	22680,0	13,35	120.10	26136,0	15,38
43.10	33328,0	19,61	147.10	69320,0	40,80
55.10	22048,0	12,98	161.10	40920,0	24,08
57.10	18800,0	11,06	162.10	166848,0	98,19
69.10	45616,0	26,85	163.10	24160,0	14,22
77.10	28368,0	16,69	175.10	15023,0	8,84
105.10	169920,0	100,00	368.40	20368,0	11,99
106.10	13554,0	7,98			

Spectrometer: HEWLETT PACKARD GC/MS 6890/5973  
 Inlet system: capillary GC/MS  
 Scan Range: 40-700 amu  
 Source temperature: 230 °C

Flow: 1.2 mL/min  
 Column: DB 17-HT (30 m x 0.25 mm x 0.15 µm)  
 Programme temperature: 40 °C (3 min); 20 °C/min  
 (350 °C); 350 °C (20 min)