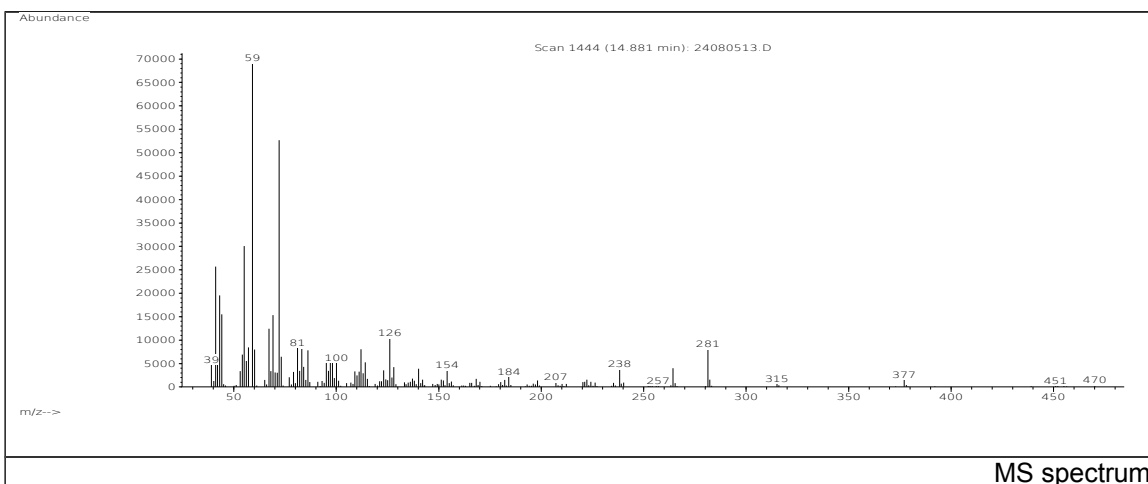
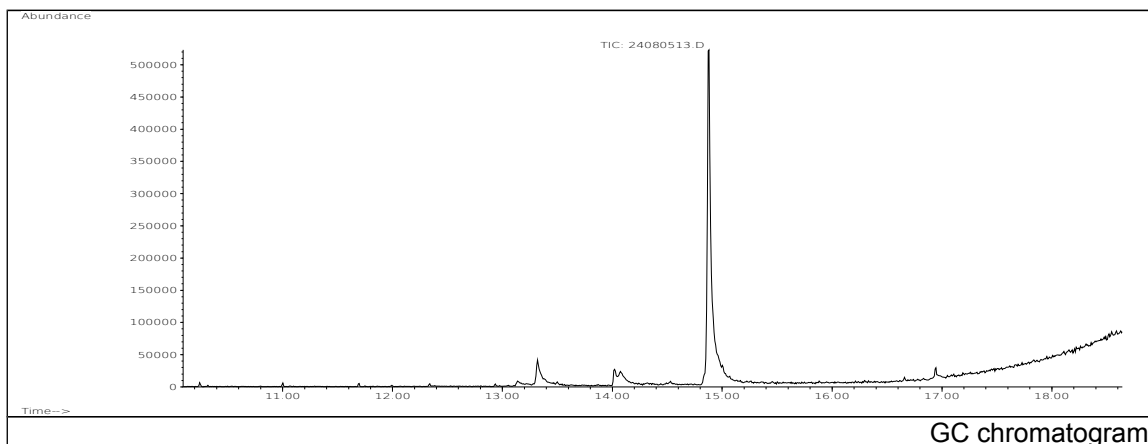


# JRC CRL - FCM Database / GC-MS

Sample Name: Oleamide  
Solvent: Methanol  
Concentration: 100 µg/mL

Date: 24/08/2005  
CAS: 000301-02-0  
PM ref: 68960 [U.R.N. A043]



m/z	Abundance	Ion Intensity %	m/z	Abundance	Ion Intensity %
41.10	28928,0	39,18	69.10	13570,0	18,38
43.10	21240,0	28,77	72.10	53040,0	71,84
44.10	15993,0	21,66	81.10	8545,0	11,57
55.10	30320,0	41,07	83.10	8345,0	11,30
57.10	9575,0	12,97	98.10	8929,0	12,09
59.10	73832,0	100,00	112.10	8255,0	11,18
60.10	8765,0	11,87	126.10	9914,0	13,43
67.10	11430,0	15,48			

Spectrometer: HEWLETT PACKARD GC/MS 6890/5973  
Inlet system: capillary GC/MS  
Scan Range: 40-700 amu  
Source temperature: 230 °C

Flow: 1.2 mL/min  
Column: DB 17-HT (30 m x 0.25 mm x 0.15 µm)  
Programme temperature: 40 °C (3 min); 20 °C/min  
(350 °C); 350 °C (20 min)