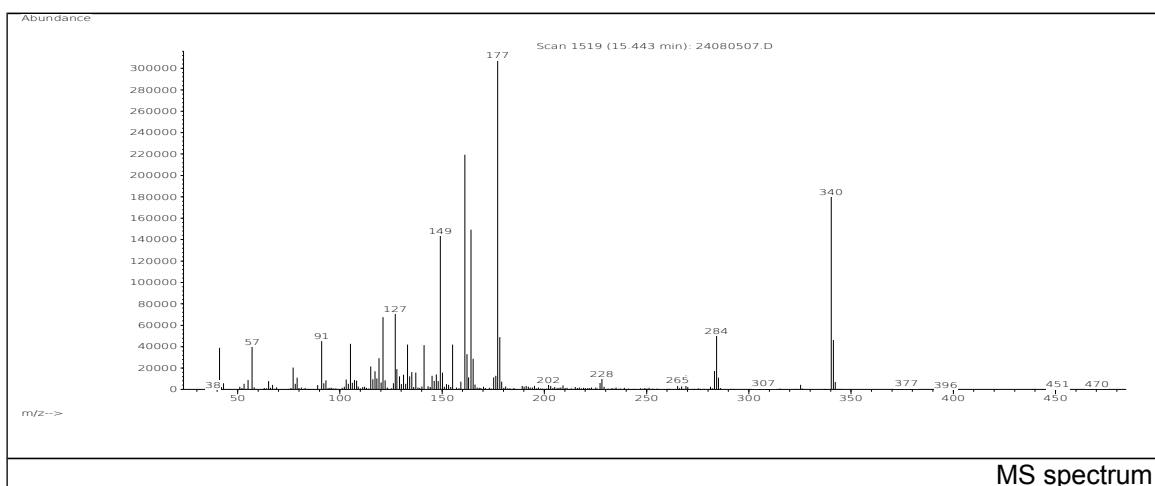
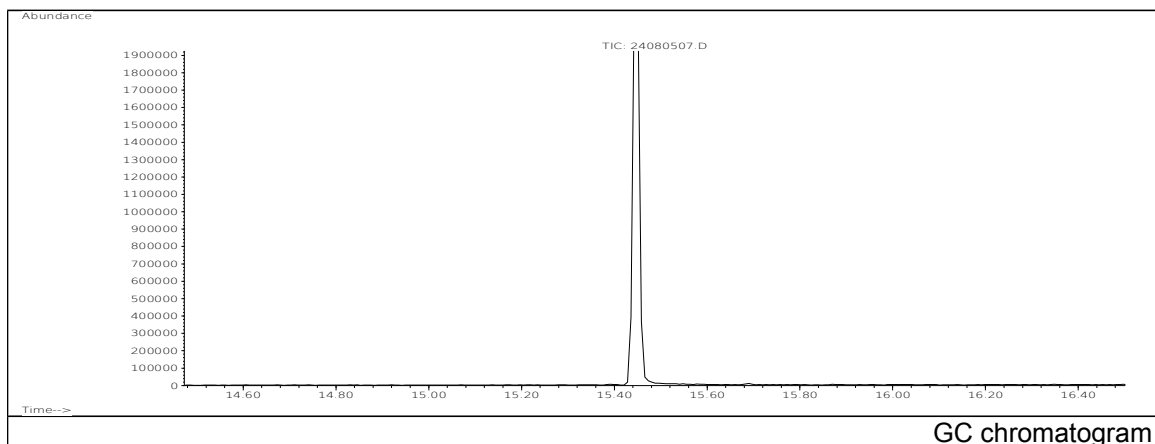


JRC CRL - FCM Database / GC-MS

Sample Name: 2,2'-Methylene bis(4-methyl-6-tert-butylphenol)
Solvent: Hexane
Concentration: 100 µg/mL

Date: 24/08/2005
CAS: 000119-47-1
PM ref: 66480 [U.R.N. A041]



m/z	Abundance	Ion Intensity %	m/z	Abundance	Ion Intensity %
91.10	45288,0	14,32	161.10	219264,0	69,35
105.10	42600,0	13,47	164.10	149312,0	47,23
121.10	67536,0	21,36	177.20	316160,0	100,00
127.10	70736,0	22,37	178.20	48968,0	15,49
133.10	41840,0	13,23	284.20	50216,0	15,88
141.10	41376,0	13,09	340.30	180032,0	56,94
149.10	143872,0	45,51	341.30	46080,0	14,57
155.10	41824,0	13,23			

Spectrometer: HEWLETT PACKARD GC/MS 6890/5973
Inlet system: capillary GC/MS
Scan Range: 40-700 amu
Source temperature: 230 °C

Flow: 1.2 mL/min
Column: DB 17-HT (30 m x 0.25 mm x 0.15 µm)
Programme temperature: 40 °C (3 min); 20 °C/min
(350 °C); 350 °C (20 min)