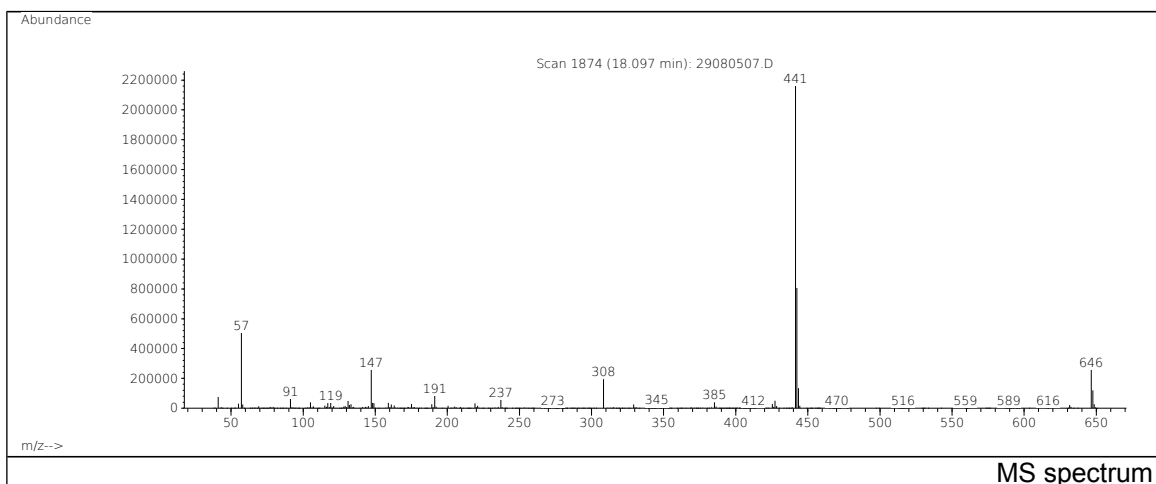
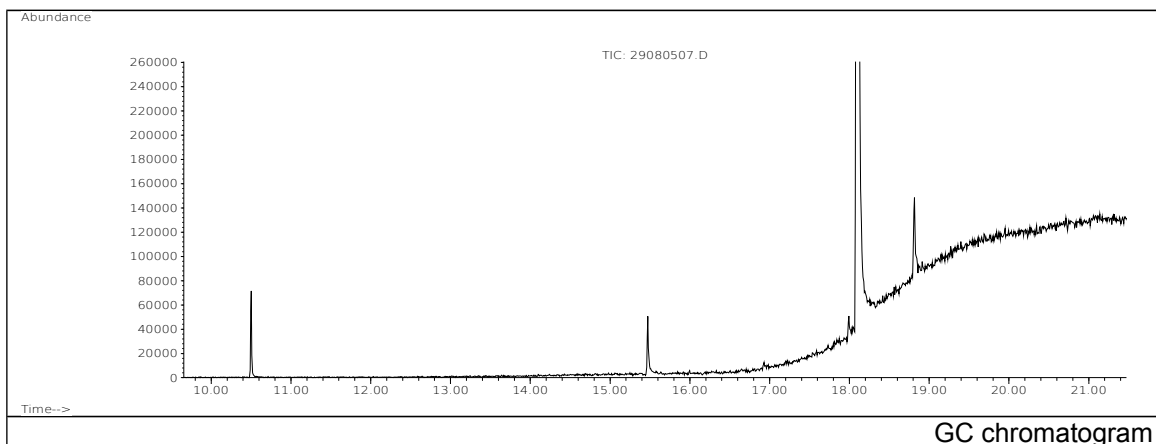


JRC CRL - FCM Database / GC-MS

Sample Name: Phosphorous acid, tris(2,4-di-tert-butylphenyl) ester
Solvent: Hexane
Concentration: 100 µg/mL

Date: 29/08/2005
CAS: 031570-04-4
PM ref: 74240 [U.R.N. A039]



m/z	Abundance	Ion Intensity %	m/z	Abundance	Ion Intensity %
41.10	75288,0	3,33	308.30	194688,0	8,62
57.10	507648,0	22,47	427.30	50440,0	2,23
91.10	62584,0	2,77	441.40	2259456,0	100,00
105.10	39648,0	1,75	442.40	807104,0	35,72
131.10	48600,0	2,15	443.40	134912,0	5,97
147.20	258240,0	11,43	646.60	258368,0	11,43
191.20	82640,0	3,66	647.60	119112,0	5,27
237.10	56120,0	2,48			

Spectrometer: HEWLETT PACKARD GC/MS 6890/5973
Inlet system: capillary GC/MS
Scan Range: 40-700 amu
Source temperature: 230 °C

Flow: 1.2 mL/min
Column: DB 17-HT (30 m x 0.25 mm x 0.15 µm)
Programme temperature: 40 °C (3 min); 20 °C/min
(350 °C); 350 °C (20 min)