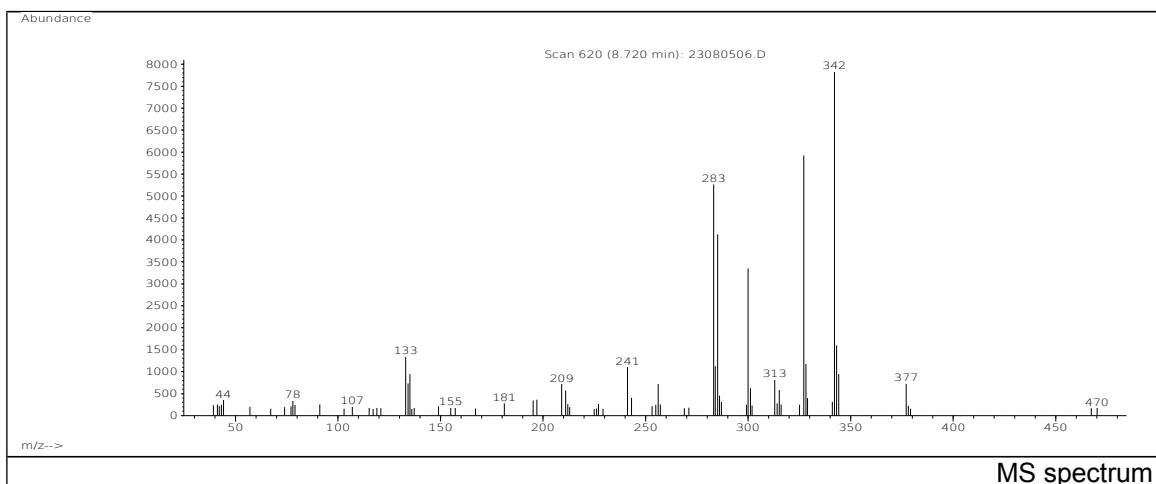
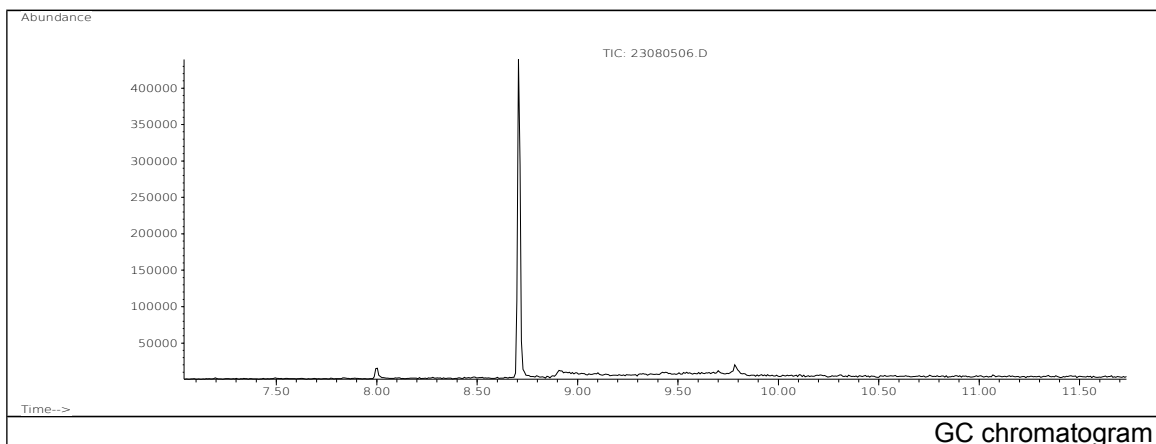


JRC CRL - FCM Database / GC-MS

Sample Name: Gallic acid, propyl ester
Solvent: Methanol
Concentration: 100 µg/mL

Date: 08/08/2005
CAS: 000121-79-9
PM ref: 55360 [U.R.N. A035]



m/z	Abundance	Ion Intensity %	m/z	Abundance	Ion Intensity %
133.10	14704,0	28,14	300.10	22336,0	42,75
134.10	9228,0	17,66	301.10	6052,0	11,58
135.00	10139,0	19,41	327.10	31792,0	60,85
241.10	7645,0	14,63	328.10	7953,0	15,22
283.10	40120,0	76,79	342.10	52248,0	100,00
284.10	10651,0	20,39	343.10	14467,0	27,69
285.10	35832,0	68,58	344.10	6426,0	12,30
286.10	8482,0	16,23			

Spectrometer: HEWLETT PACKARD GC/MS 6890/5973
Inlet system: capillary GC/MS
Scan Range: 40 - 700 amu
Source temperature: 230 °C

Flow: 1.2 mL/min
Column: DB 17-HT (30 m x 0.25 mm x 0.15 µm)
Programme temperature: 70 °C; 20 °C/min (250 °C);
10 °C/min (350 °C); 350 °C (20 min)