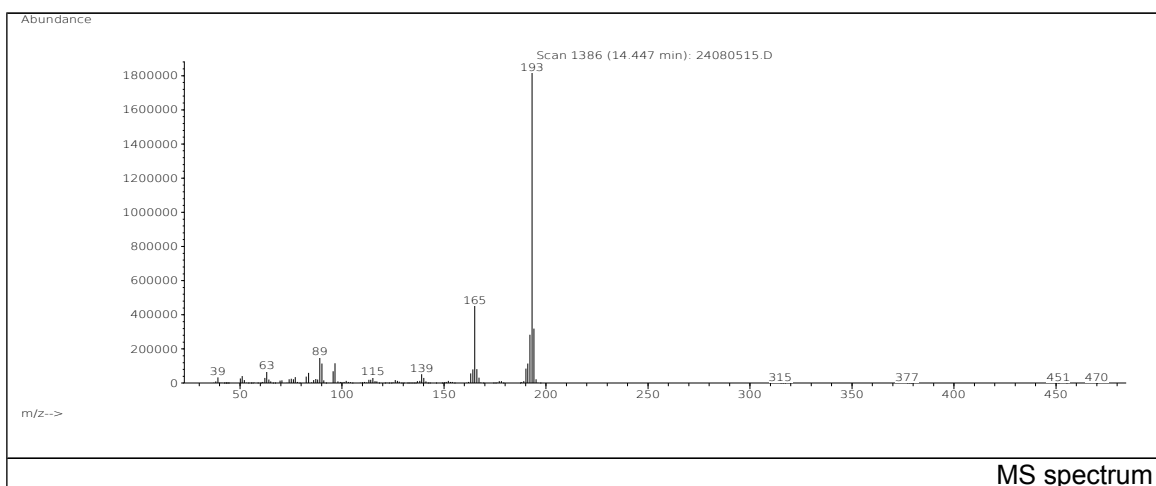
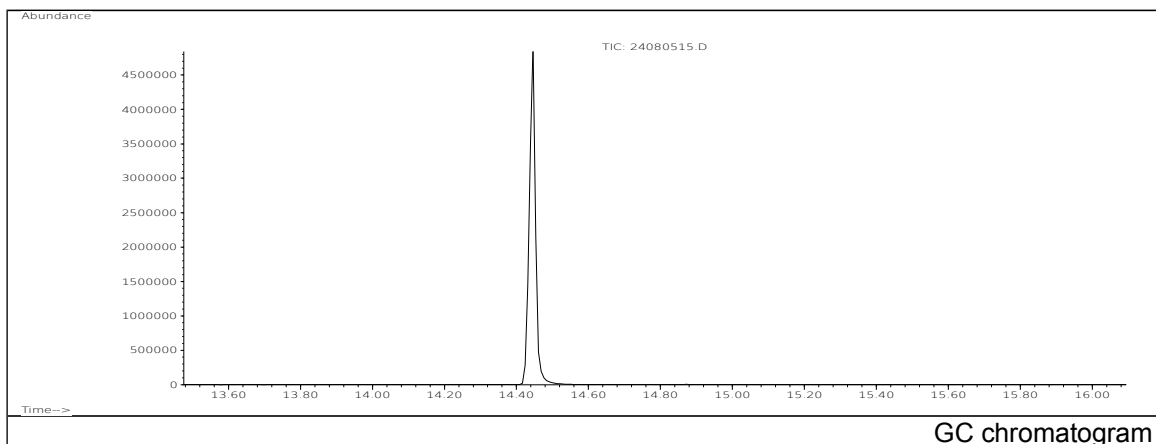


JRC CRL - FCM Database / GC-MS

Sample Name: 2-Phenylindole
Solvent: Dichloromethane
Concentration: 100 µg/mL

Date: 24/08/2005
CAS: 000948-65-2
PM ref: 72160 [U.R.N. A033]



m/z	Abundance	Ion Intensity %	m/z	Abundance	Ion Intensity %
63.10	50568,0	3,92	165.10	304640,0	23,60
83.60	44304,0	3,43	166.10	61648,0	4,78
89.10	115920,0	8,98	190.10	59448,0	4,61
90.10	86256,0	6,68	191.10	76264,0	5,91
95.60	52704,0	4,08	192.10	190592,0	14,77
96.60	86808,0	6,73	193.10	1290752,0	100,00
163.10	39872,0	3,09	194.10	219264,0	16,99
164.10	57528,0	4,46			

Spectrometer: HEWLETT PACKARD GC/MS 6890/5973
Inlet system: capillary GC/MS
Scan Range: 40-700 amu
Source temperature: 230 °C

Flow: 1.2 mL/min
Column: DB 17-HT (30 m x 0.25 mm x 0.15 µm)
Programme temperature: 40 °C (3 min); 20 °C/min
(350 °C); 350 °C (20 min)