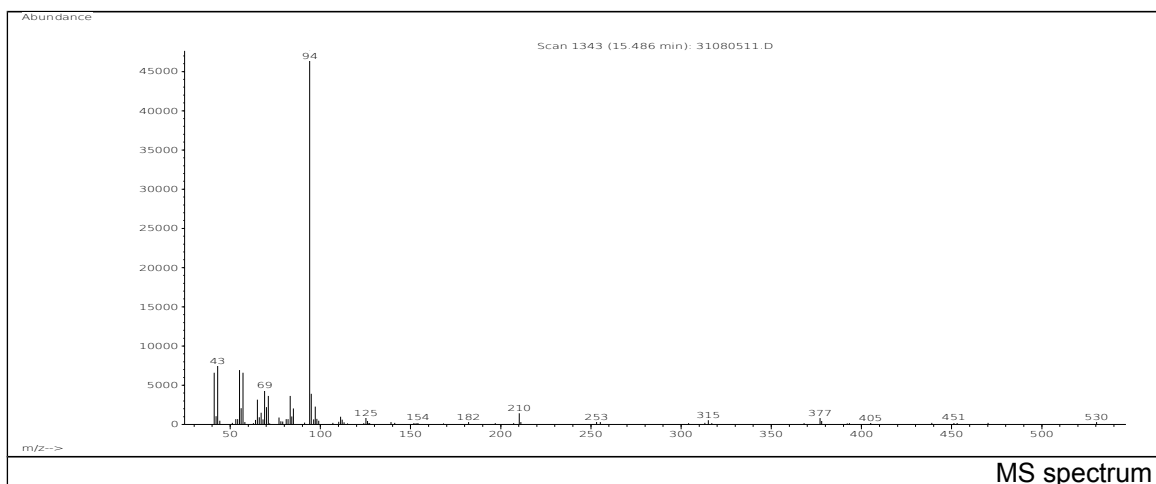
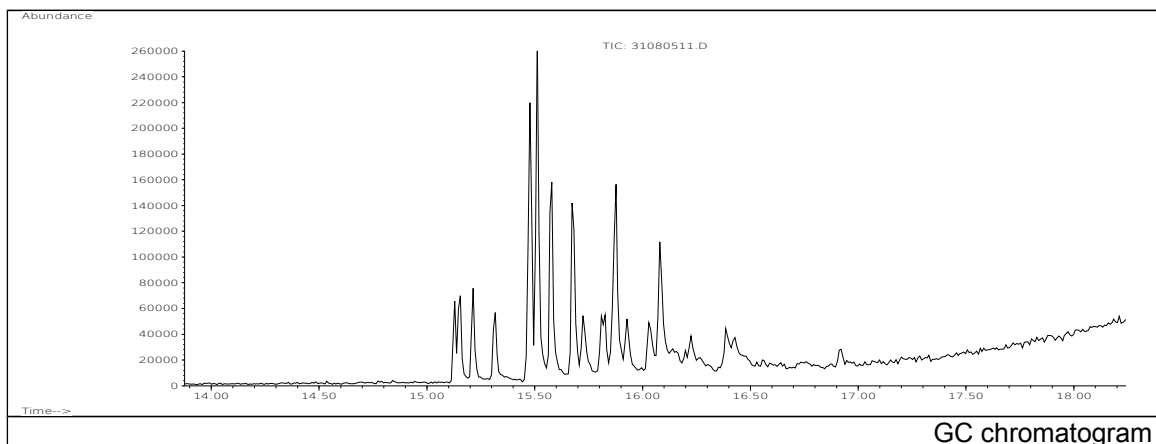


# JRC CRL - FCM Database / GC-MS

Sample Name: Alkyl(C10-C20)sulphonic acid, esters with phenols  
Solvent: Alcohol  
Concentration: 100 µg/mL

Date: 30/08/2005  
CAS: -  
PM ref: 34240 [U.R.N. A032]



m/z	Abundance	Ion Intensity %	m/z	Abundance	Ion Intensity %
41.10	14403,0	13,55	70.10	4532,0	4,26
42.10	2932,0	2,76	71.10	6709,0	6,31
43.10	16928,0	15,92	83.10	5709,0	5,37
55.10	14313,0	13,46	85.10	4921,0	4,63
56.10	5185,0	4,88	94.10	106320,0	100,00
57.10	13805,0	12,98	95.10	9322,0	8,77
65.10	6116,0	5,75	97.10	4341,0	4,08
69.10	9504,0	8,94			

Spectrometer: HEWLETT PACKARD GC/MS 6890/5973  
Inlet system: capillary GC/MS  
Scan Range: 40-700 amu  
Source temperature: 230 °C

Flow: 1.2 mL/min  
Column: DB 17-HT (30 m x 0.25 mm x 0.15 µm)  
Programme temperature: 40 °C (3 min); 20 °C/min  
(350 °C); 350 °C (20 min)