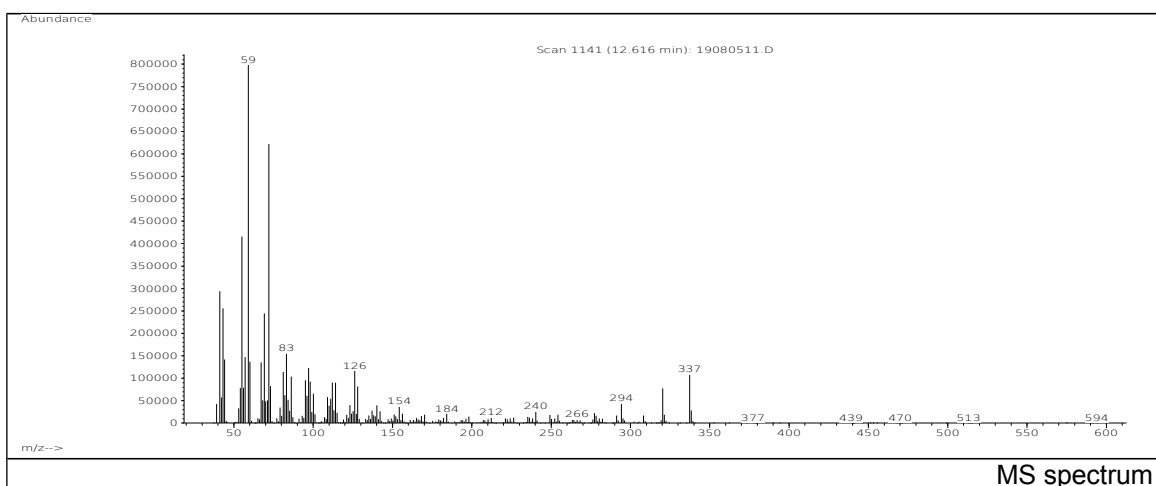
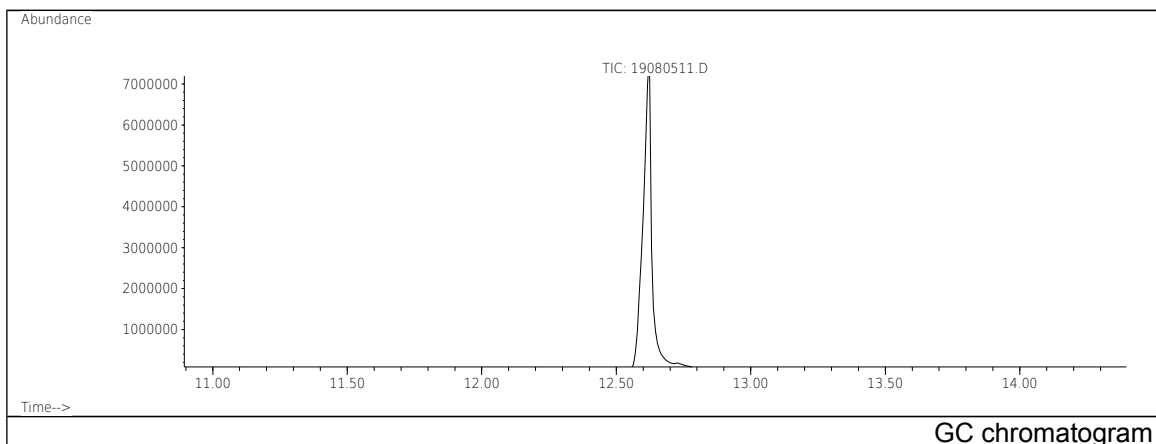


# JRC CRL - FCM Database / GC-MS

Sample Name: Erucamide  
Solvent: Isopropanol  
Concentration: 100 µg/mL

Date: 08/08/2005  
CAS: 000112-84-5  
PM ref: 52720 [U.R.N. A030]



m/z	Abundance	Ion Intensity %	m/z	Abundance	Ion Intensity %
41.10	227392,0	35,83	69.10	183296,0	28,88
43.10	199552,0	31,44	72.10	479424,0	75,54
44.10	105496,0	16,62	81.10	86784,0	13,67
55.10	324352,0	51,11	83.10	120376,0	18,97
57.10	115832,0	18,25	97.10	93072,0	14,67
59.10	634624,0	100,00	126.10	89360,0	14,08
60.10	100952,0	15,91	337.40	84832,0	13,37
67.10	101632,0	16,01			

Spectrometer: HEWLETT PACKARD GC/MS 6890/5973  
Inlet system: capillary GC/MS  
Scan Range: 40 - 700 amu  
Source temperature: 230 °C

Flow: 1.2 mL/min  
Column: DB 17-HT (30 m x 0.25 mm x 0.15 µm)  
Programme temperature: 70 °C; 20 °C/min (250 °C);  
10 °C/min (350 °C); 350 °C (20 min)