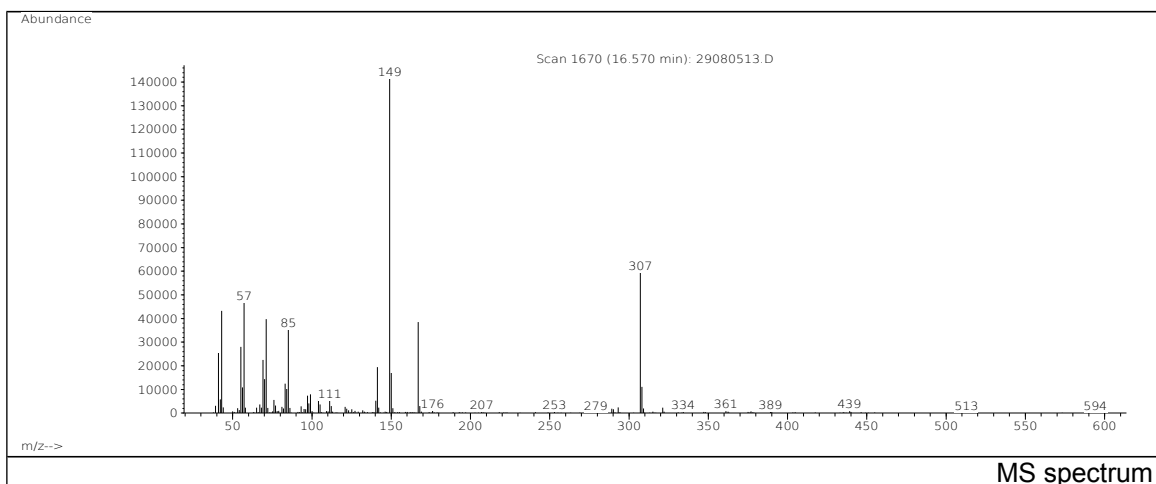
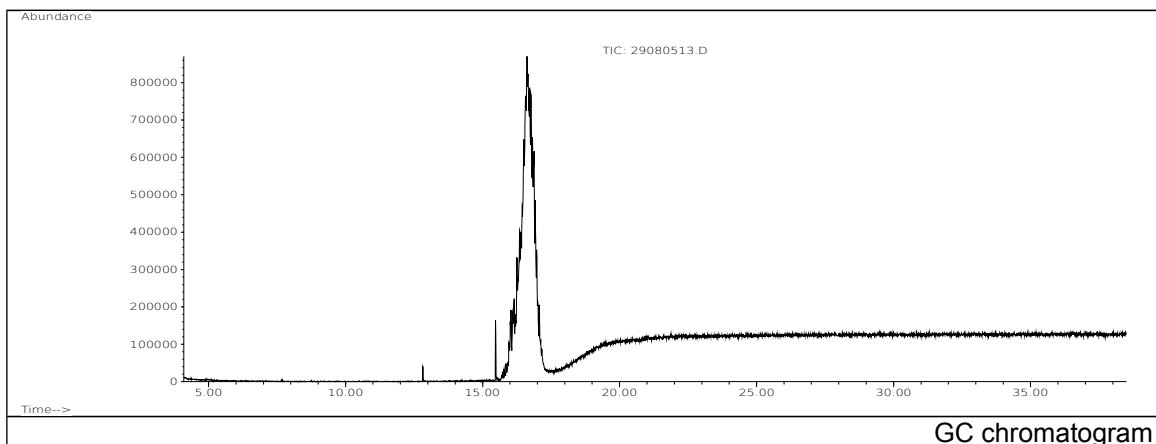


JRC CRL - FCM Database / GC-MS

Sample Name: Phthalic acid, diisodecyl ester
Solvent: Hexane
Concentration: 100 µg/mL

Date: 29/08/2005
CAS: 026761-40-0
PM ref: 75360 [U.R.N. A025]



m/z	Abundance	Ion Intensity %	m/z	Abundance	Ion Intensity %
41.10	26832,0	17,95	85.10	35296,0	23,61
43.10	44552,0	29,80	141.20	21056,0	14,08
55.10	28768,0	19,24	149.00	149504,0	100,00
57.10	43504,0	29,10	150.10	16728,0	11,19
69.10	23368,0	15,63	167.10	36304,0	24,28
70.10	14089,0	9,42	307.20	61896,0	41,40
71.10	38232,0	25,57	308.20	12874,0	8,61
83.10	12380,0	8,28			

Spectrometer: HEWLETT PACKARD GC/MS 6890/5973
Inlet system: capillary GC/MS
Scan Range: 40-700 amu
Source temperature: 230 °C

Flow: 1.2 mL/min
Column: DB 17-HT (30 m x 0.25 mm x 0.15 µm)
Programme temperature: 40 °C (3 min); 20 °C/min
(350 °C); 350 °C (20 min)