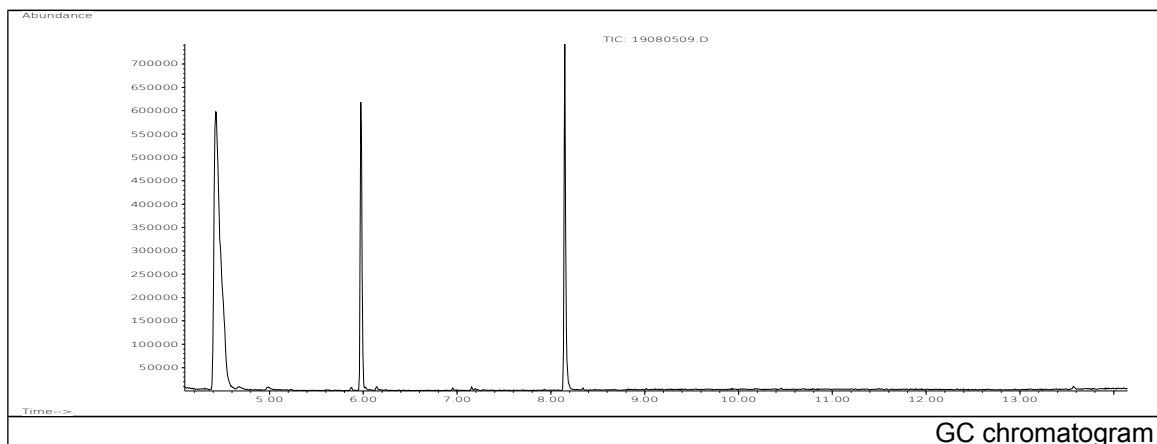


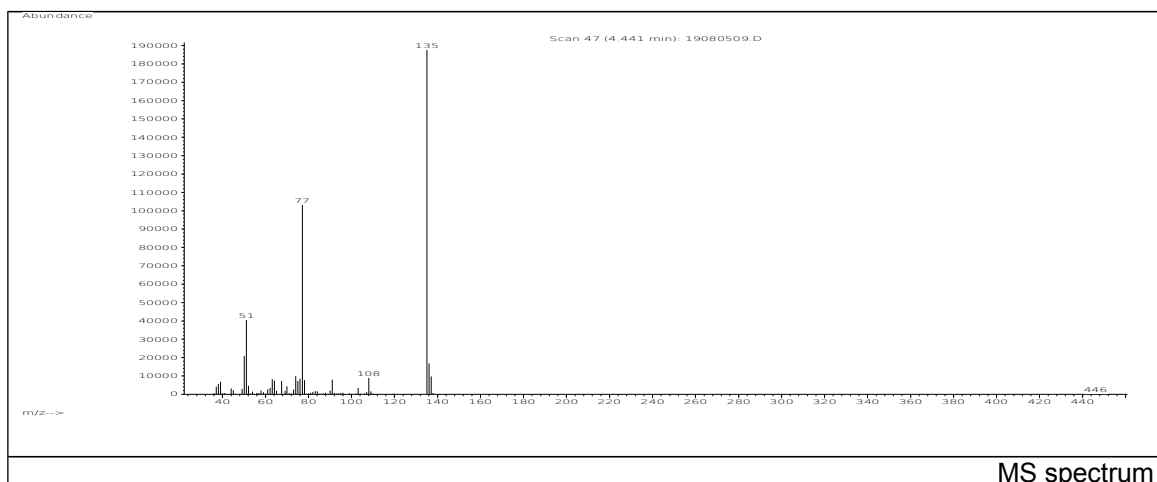
JRC CRL - FCM Database / GC-MS

Sample Name: N,N'-Diphenylthiourea
Solvent: Ether
Concentration: 100 µg/mL

Date: 08/08/2005
CAS: 000102-08-9
PM ref: 51680 [U.R.N. A023]



GC chromatogram



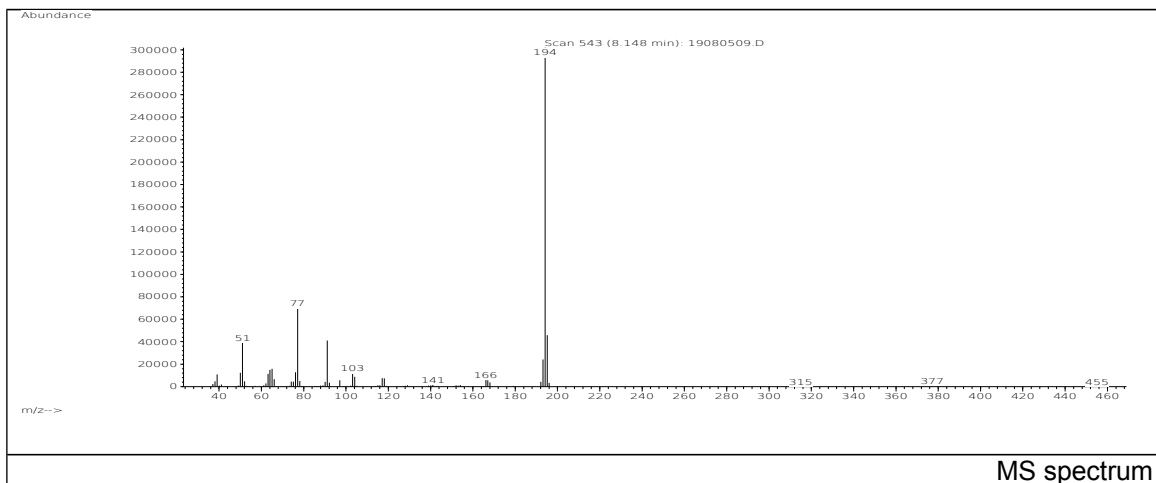
MS spectrum

m/z	Abundance	Ion Intensity %	m/z	Abundance	Ion Intensity %
39.10	8180,0	3,84	77.10	115104,0	54,04
50.10	22192,0	10,42	78.10	9444,0	4,43
51.10	44608,0	20,94	91.10	8983,0	4,22
63.10	9058,0	4,25	108.00	9148,0	4,29
64.10	8773,0	4,12	135.00	212992,0	100,00
74.10	9688,0	4,55	136.10	18440,0	8,66
75.10	8044,0	3,78	137.10	11575,0	5,43
76.10	8681,0	4,08			

Spectrometer: HEWLETT PACKARD GC/MS 6890/5973
Inlet system: capillary GC/MS
Scan Range: 40 - 700 amu
Source temperature: 230 °C

Flow: 1.2 mL/min
Column: DB 17-HT (30 m x 0.25 mm x 0.15 µm)
Programme temperature: 70 °C; 20 °C/min (250 °C);
10 °C/min (350 °C); 350 °C (20 min)

JRC CRL - FCM Database / GC-MS



m/z	Abundance	Ion Intensity %	m/z	Abundance	Ion Intensity %
39.10	10815,0	3,58	91.10	41008,0	13,59
50.10	12400,0	4,11	103.10	11758,0	3,90
51.10	39400,0	13,06	104.10	8750,0	2,90
63.10	11429,0	3,79	117.10	7552,0	2,50
64.10	14996,0	4,97	193.10	24272,0	8,04
65.10	15868,0	5,26	194.10	301760,0	100,00
76.10	12734,0	4,22	195.10	45944,0	15,23
77.10	69872,0	23,15			

Spectrometer: HEWLETT PACKARD GC/MS 6890/5973
 Inlet system: capillary GC/MS
 Scan Range: 40 - 700 amu
 Source temperature: 230 °C

Flow: 1.2 mL/min
 Column: DB 17-HT (30 m x 0.25 mm x 0.15 µm)
 Programme temperature: 70 °C; 20 °C/min (250 °C);
 10 °C/min (350 °C); 350 °C (20 min)