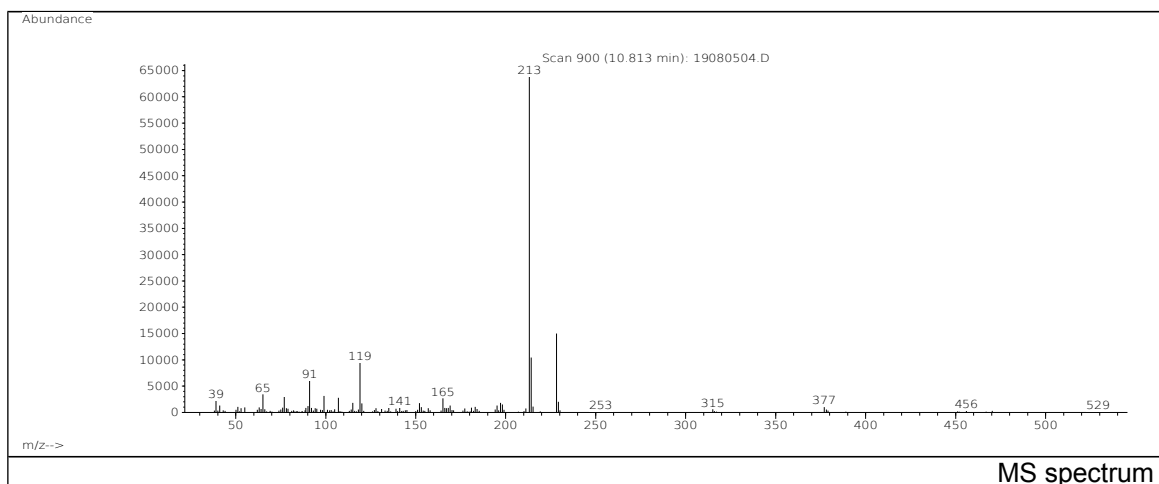
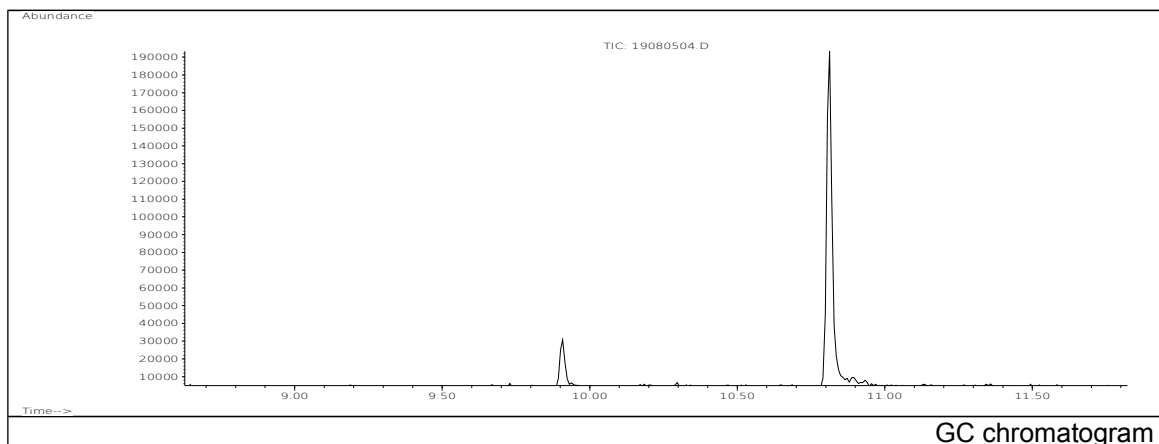


# JRC CRL - FCM Database / GC-MS

Sample Name: Bisphenol A  
Solvent: Hexane  
Concentration: 100 µg/mL

Date: 08/08/2005  
CAS: 00080-05-7  
PM ref: 40060 [U.R.N. A010]



m/z	Abundance	Ion Intensity %	m/z	Abundance	Ion Intensity %
39.10	2230,0	3,37	135.10	1954,0	2,95
65.10	3428,0	5,18	165.10	2669,0	4,03
77.00	2924,0	4,42	197.10	1834,0	2,77
91.10	6035,0	9,11	213.10	66224,0	100,00
99.10	3153,0	4,76	214.10	10459,0	15,79
107.00	2775,0	4,19	228.20	14989,0	22,63
115.10	1843,0	2,78	229.20	2055,0	3,10
119.10	9480,0	14,32			

Spectrometer: HEWLETT PACKARD GC/MS 6890/5973  
Inlet system: capillary GC/MS  
Scan Range: 40 - 700 amu  
Source temperature: 230 °C

Flow: 1.2 mL/min  
Column: DB 17-HT (30 m x 0.25 mm x 0.15 µm)  
Programme temperature: 70 °C; 20 °C/min (250 °C);  
10 °C/min (350 °C); 350 °C (20 min)