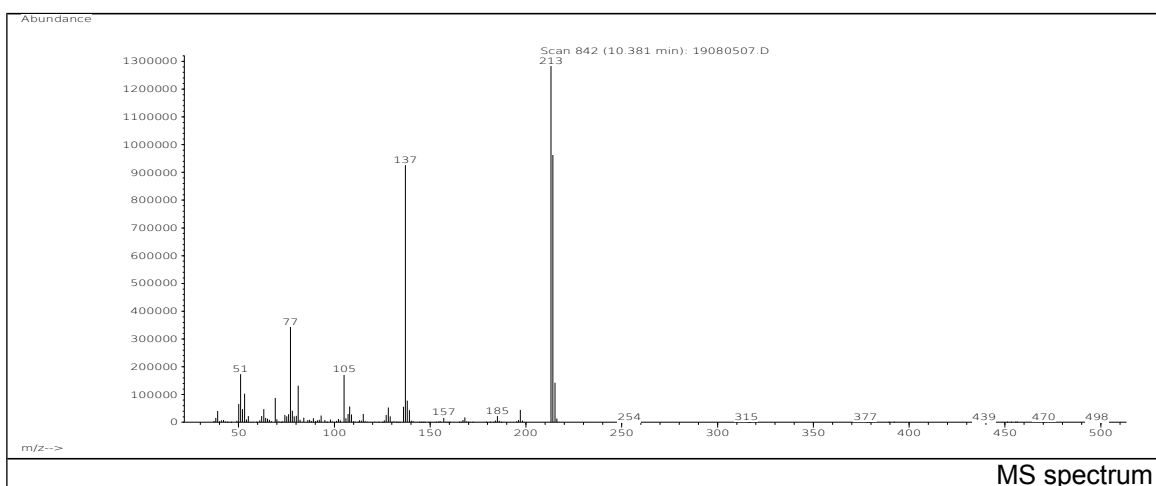
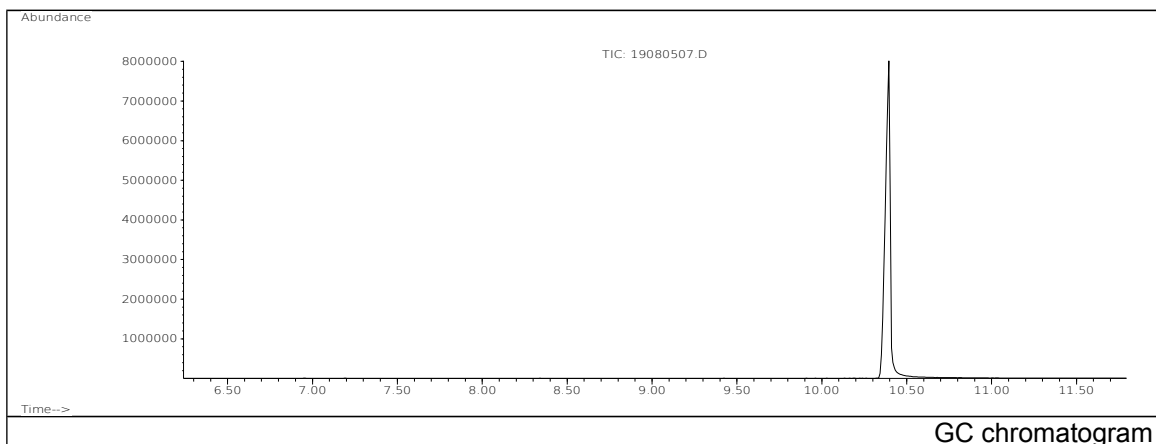


JRC CRL - FCM Database / GC-MS

Sample Name: 2,4-Dihydroxybenzophenone
Solvent: Diethylether
Concentration: 100 µg/mL

Date: 08/08/2005
CAS: 000131-56-6
PM ref: 48640 [U.R.N. A004]



m/z	Abundance	Ion Intensity %	m/z	Abundance	Ion Intensity %
50.10	79736,0	4,93	128.10	67616,0	4,18
51.10	207744,0	12,84	136.10	69656,0	4,31
53.10	119200,0	7,37	137.10	1152512,0	71,26
69.10	104544,0	6,46	138.10	101800,0	6,29
77.10	418112,0	25,85	213.10	1617408,0	100,00
81.10	159872,0	9,88	214.10	1201152,0	74,26
105.10	208768,0	12,91	215.10	173824,0	10,75
108.10	68832,0	4,26			

Spectrometer: HEWLETT PACKARD GC/MS 6890/5973
Inlet system: capillary GC/MS
Scan Range: 40 - 700 amu
Source temperature: 230 °C

Flow: 1.2 mL/min
Column: DB 17-HT (30 m x 0.25 mm x 0.15 µm)
Programme temperature: 70 °C; 20 °C/min (250 °C);
10 °C/min (350 °C); 350 °C (20 min)