



**IASP**

International Association of Science Parks  
and Areas of Innovation

**TechParks,  
TechTransfer  
&  
TechSuccess**

Hardy R. Schmitz

*Linking the best since 1984*

# WHY IASP ?

The **worldwide network** of science and technology parks (STPs), and other areas of innovation (AOIs), with a genuine international character

**353 Members in 77 countries**, as well as contacts and associates in many more

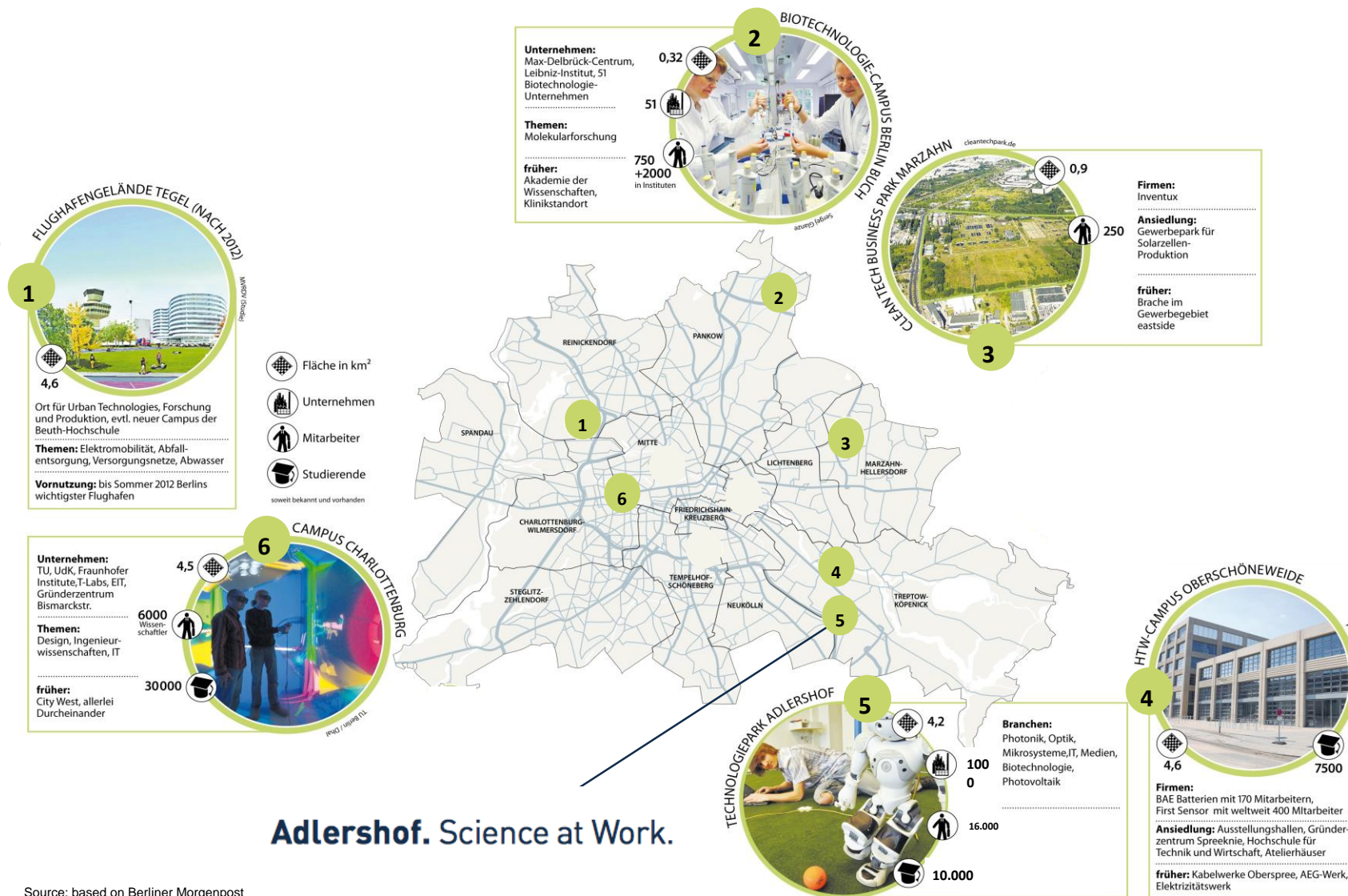
A non-profit organisation

Independent and financially self-supporting

TechParks,  
Tech  
Transfer  
&  
Tech Success

- ✔ Create/Identify Critical Mass
- ✔ Support Networks - Smart Specialisation
- ✔ Shape Neighborhoods
- ✔ Incubation - Acceleration - Retention
- ✔ Mind the city
- ✔ Autonomous governance & time
- ✔ Measure and smile

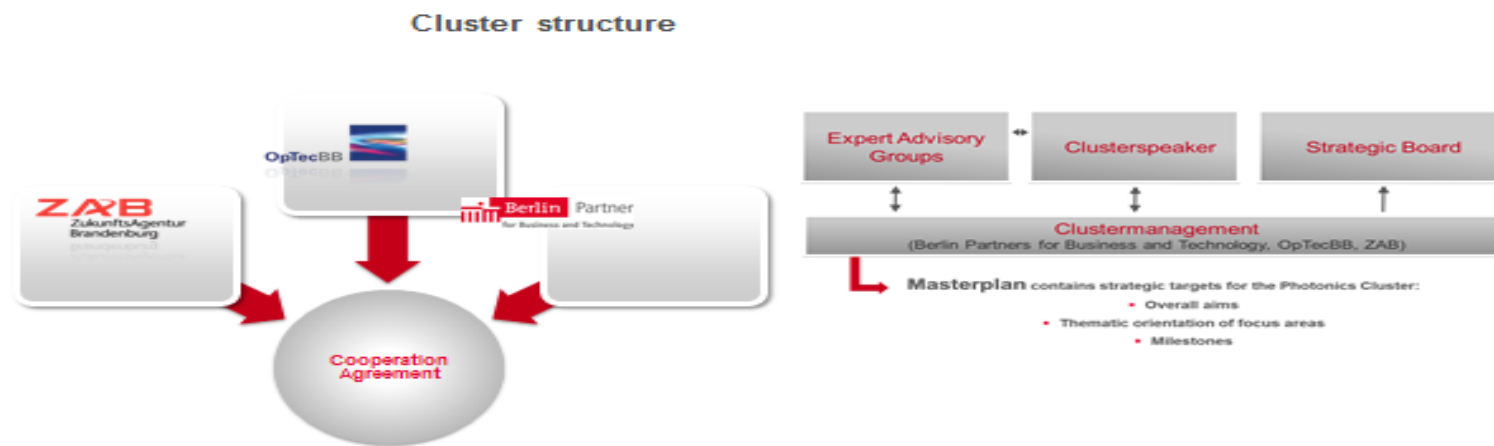
# Creating Critical Mass around Science



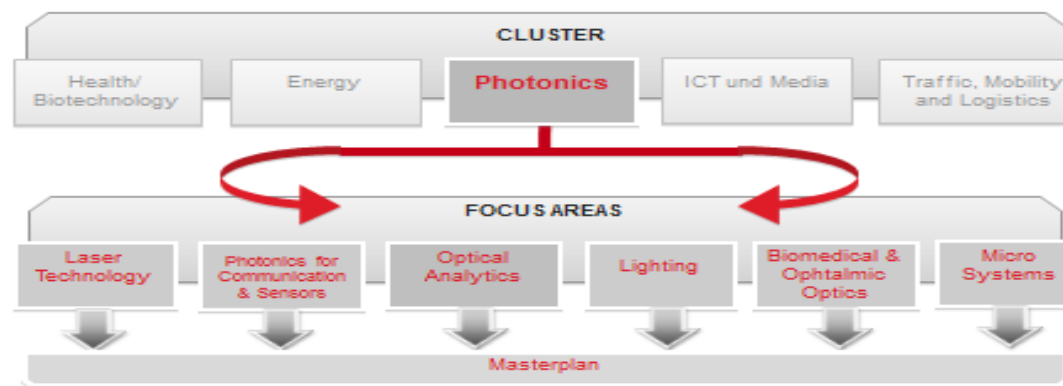
Source: based on Berliner Morgenpost 9/2011



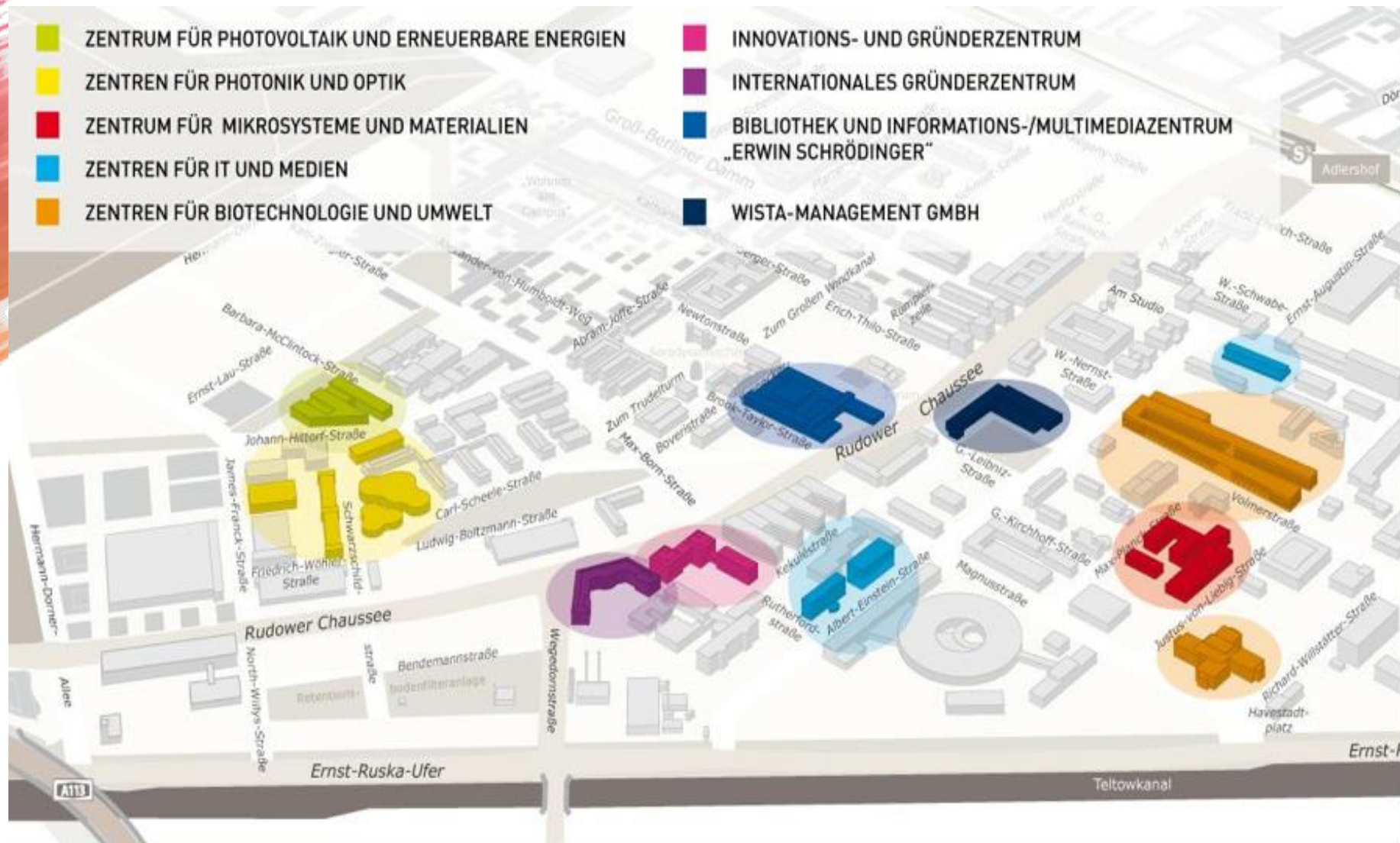
# Supporting Clusters: Photonics & Optics - 1 of 5 in Berlin




### Focus areas of the Photonics Cluster



# Creating Neighborhood Eg. Adlershof





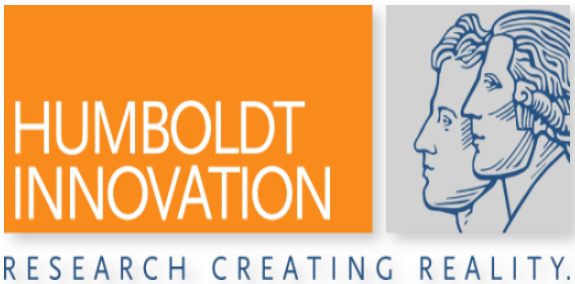
# Incubation, Acceleration, Retention

# From Lab to World Markets:

## Comprehensive support for all stages of the company life cycle

Pre-seed/Seed

Humboldt “Spin-Off Zone” (university & R&D spin-offs)



>15 projects/  
start-up teams p.a.

Incubation

IGZ / OWZ  
Incubators (national & international)



95  
businesses

Growth

15 Technology  
Centers (SMEs)



350  
companies

Maturity

Well prepared  
plots, special  
pricing scheme



cumulative >30  
companies



# Adlershof services and infrastructure:

## Comprehensive support for all stages of the company life cycle

Pre-seed/Seed

Incubation

Growth

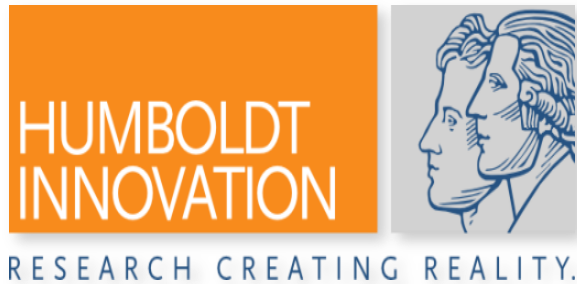
Maturity

Humboldt “Spin-Off Zone” (university & R&D spin-offs)

IGZ / OWZ incubators (national & international)

15 Technology centres (SMEs)

Well prepared plots, special pricing scheme



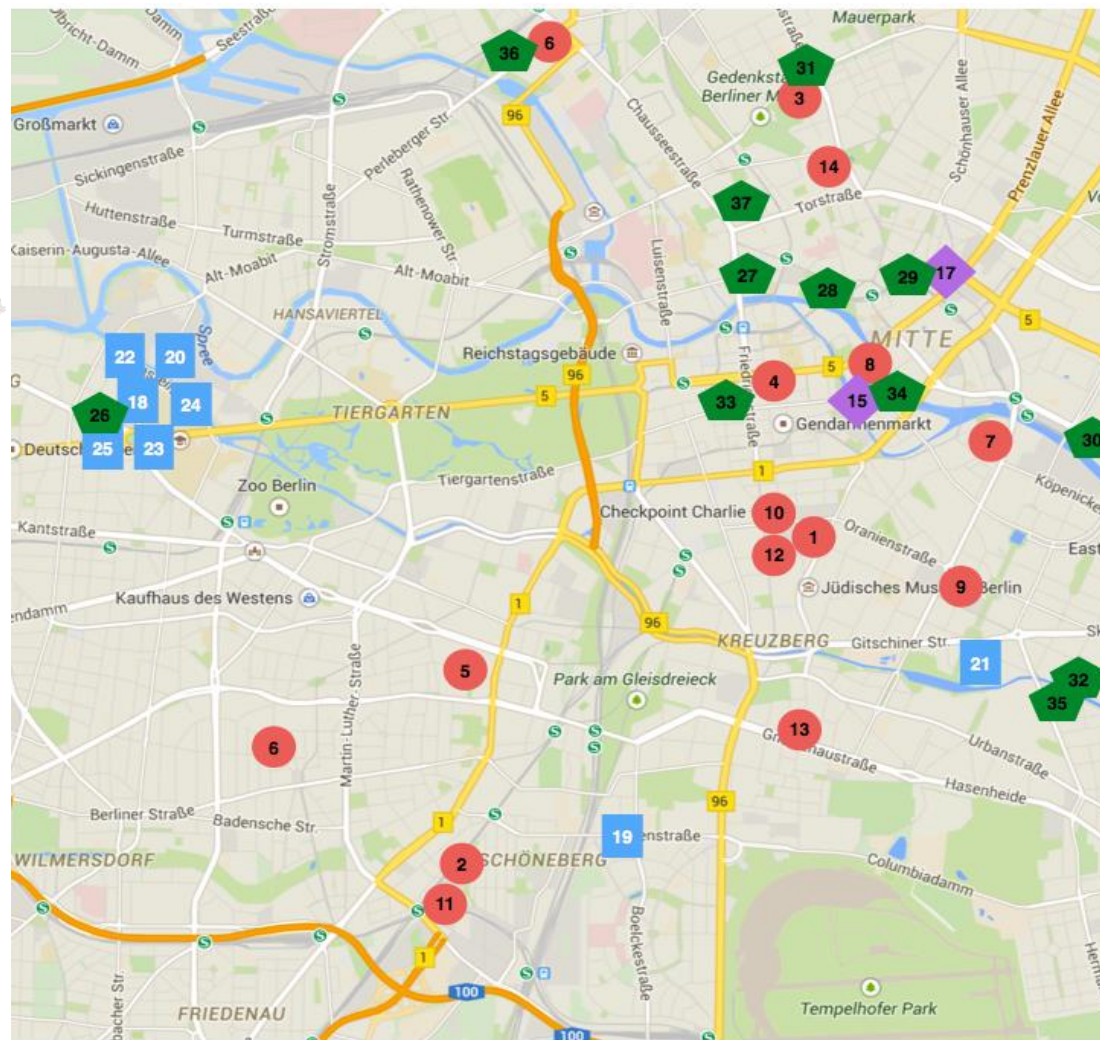
Bus. Plan Competition  
Business Angels Club  
Coaching Support  
Incubation Centers

Incubation Centers  
Accelerator Programs  
Pitching Events  
Networks (INAM, etc)

„Profit“ Tech. Dev.  
Pre-equip. Buildings  
Financing Programs

Growth Finance  
Internationalisation

Mind the city:  
 “start-ups”  
 like the buzz  
 e.g. Berlin  
 location of  
 accelerators

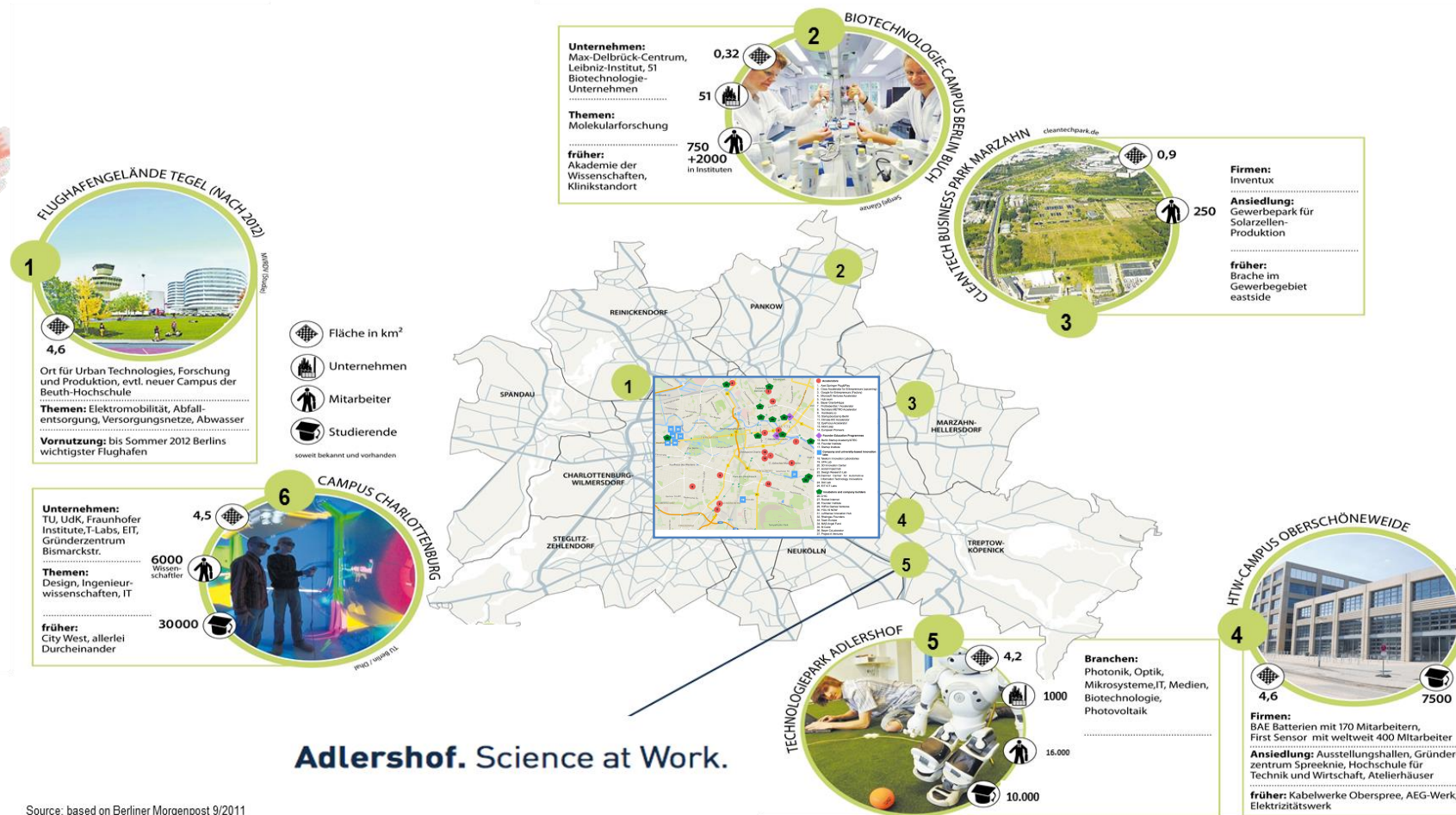


- Accelerators**
  1. Axel Springer Plug&Play
  2. Cisco Accelerator for Entrepreneurs (upcoming)
  3. Google for Entrepreneurs (Factory)
  4. Microsoft Ventures Accelerator
  5. Hub:raum
  6. Bayer Grants4Apps
  7. ProSiebenSat.1 Accelerator
  8. Techstars METRO Accelerator
  9. Hardware.co
  10. Startupbootcamp Berlin
  11. Climate-KIC Accelerator
  12. EyeFocus Accelerator
  13. AtomLeap
  14. European Pioneers
- ◆ Founder Education Programmes**
  15. Berlin Startup Academy/GTEC
  16. Founder Institute
  17. Startup Institute
- Company and university-based Innovation labs**
  18. Telekom Innovation Laboratories
  19. UFA Lab
  20. 3D Innovation Center
  21. social impact lab
  22. Design Research Lab
  23. Daimler Center for Automotive Information Technology Innovations
  24. DAI Lab
  25. EIT ICT Labs
- ◆ Incubators and company builders**
  26. CHIC
  27. Rocket Internet
  28. Founder Institute
  29. HitFox Games Ventures
  30. YOU IS NOW
  31. Lufthansa Innovation Hub
  32. Rheingau Founders
  33. Team Europe
  34. MAS Angel Fund
  35. M Cube
  36. Bayer CoLaborator
  37. Project A Ventures

Source: Schmitz, Brinkhoff Own analysis, IASP Moscow 2016



# Mind the city “Hot Places” and TechParks



## Adlershof. Science at Work.

Source: based on Berliner Morgenpost 9/2011

Autonomy of  
Governance:  
Complex task,  
needs  
entrepreneurs



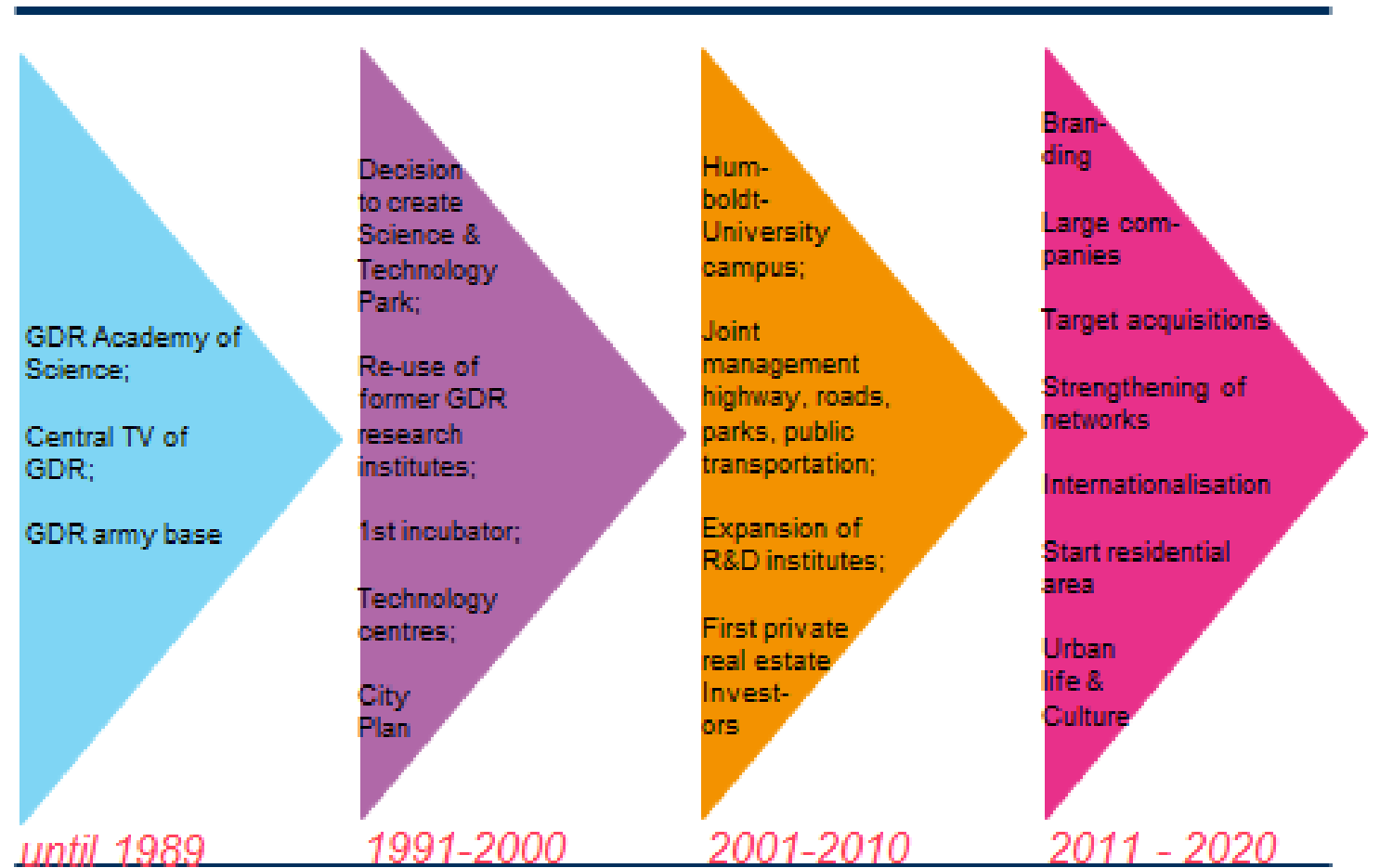
**IGNITE  
STRONG  
MOMENTUM**

Hong Kong Science and Technology Parks Corporation  
**2014 - 2015 Annual Report**



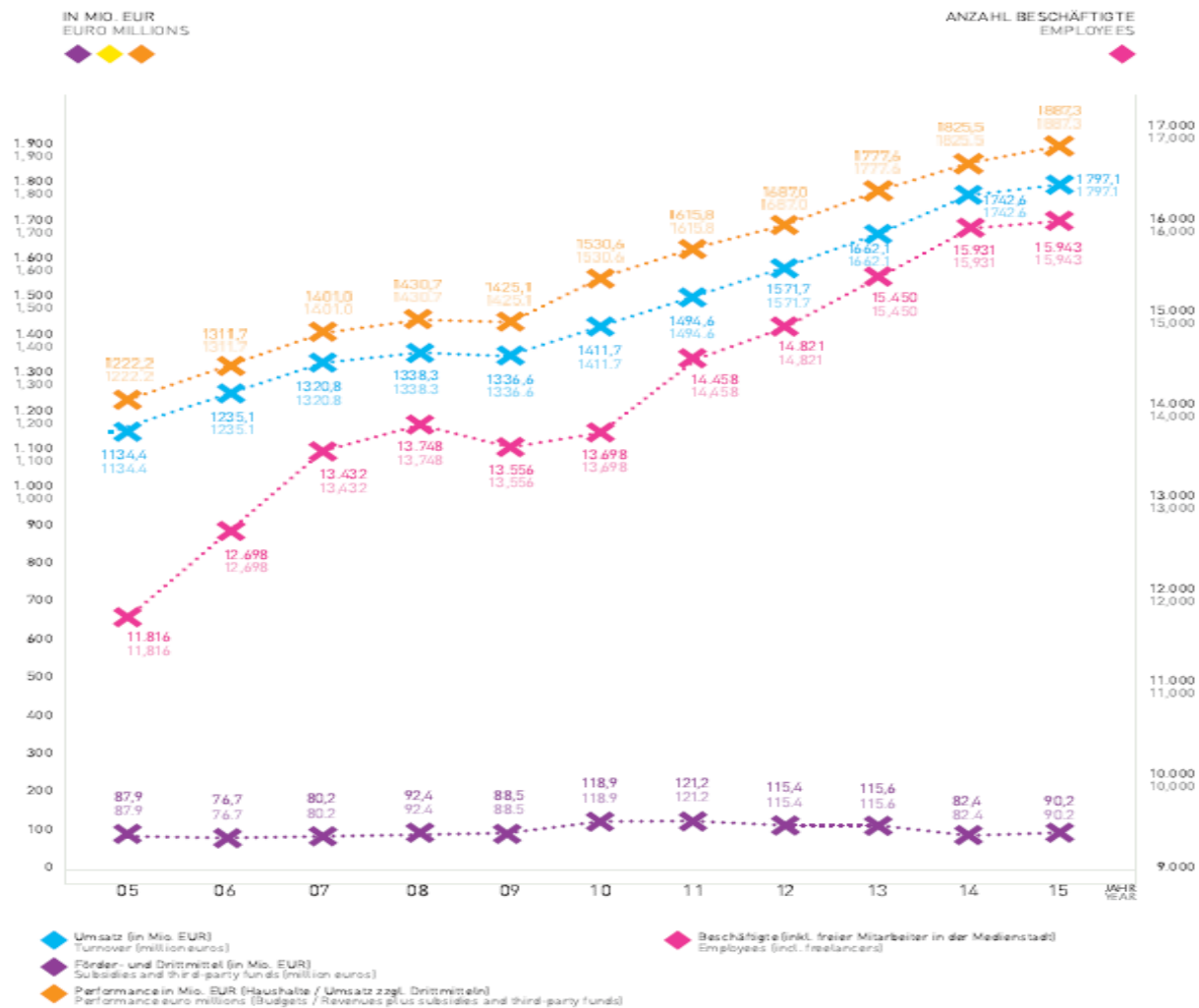
STPs take time  
 Adlershof:  
 25 years  
 19.000 empl.  
 1100 firms

### Adlershof development phases



Hardy Schmitz Own analysis

Measure well  
& Smile



Source: WISTA MANAGEMENT GMBH , Annual Report  
IASP in a few slides

# GDP: STP Adlershof creating „chinese“ growth



Quellen: UN-Statistik, Amt für Statistik Berlin Brandenburg, Umfrage Adlershof (eigene Darstellung)

\* Adlershof berücksichtigt die Umsatzentwicklung



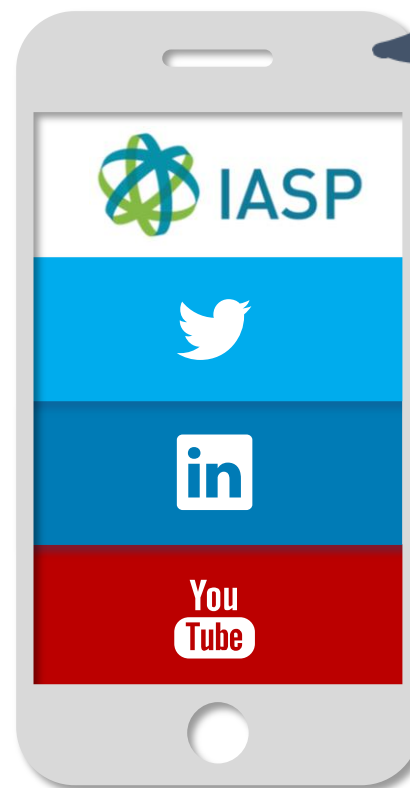
# IASP

International Association of Science Parks  
and Areas of Innovation

linking the best - [www.iasp.ws](http://www.iasp.ws)

# THANK YOU FOR YOUR ATTENTION

Hardy R. Schmitz, IASP Advisory Board · [iasp@iasp.ws](mailto:iasp@iasp.ws)  
HardyRSchmitz@t-online.de



[www.iasp.ws](http://www.iasp.ws)

@iaspnetwork

IASP - International Association  
of Science Parks and Areas of Innovation

IASP visuals