

HOW CAN WE IMPROVE AIR QUALITY AND CLIMATE POLICIES IN THE WESTERN BALKANS?

ALIGNMENT

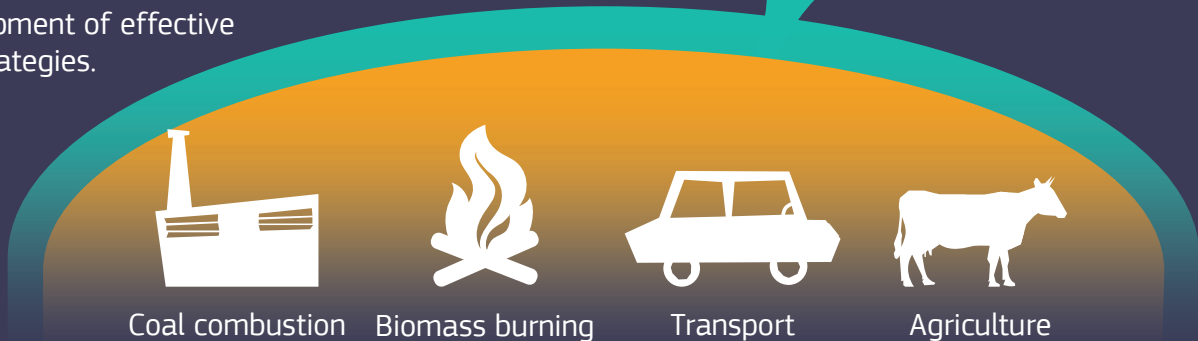
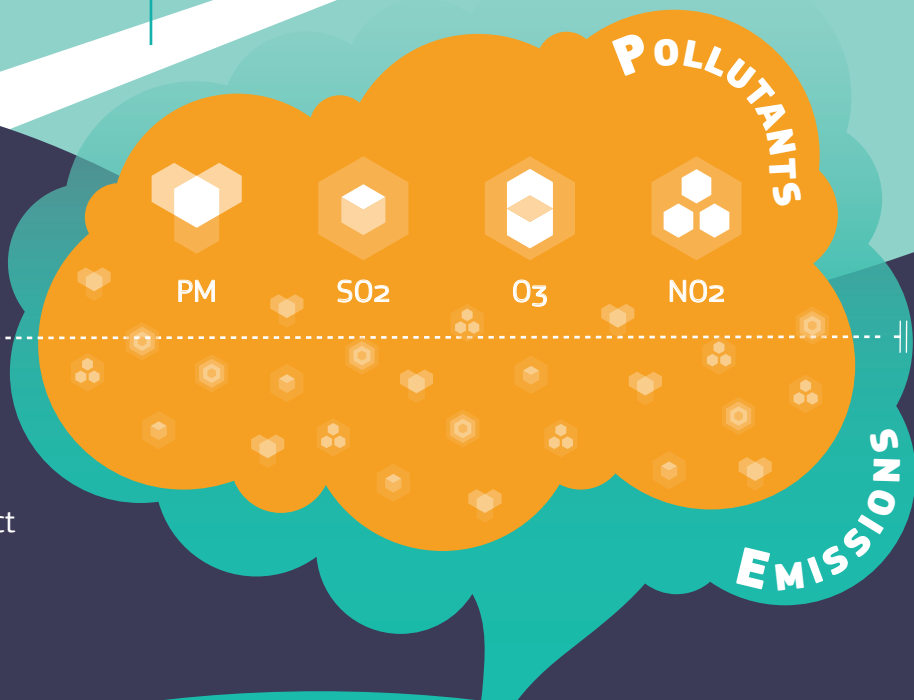
At present, the alignment with the *EU acquis on environment and climate* in the WB varies from limited to advanced. In general, the transposition and implementation of the provisions on air quality are at a more advanced stage than those concerning climate change.



Above the limit value

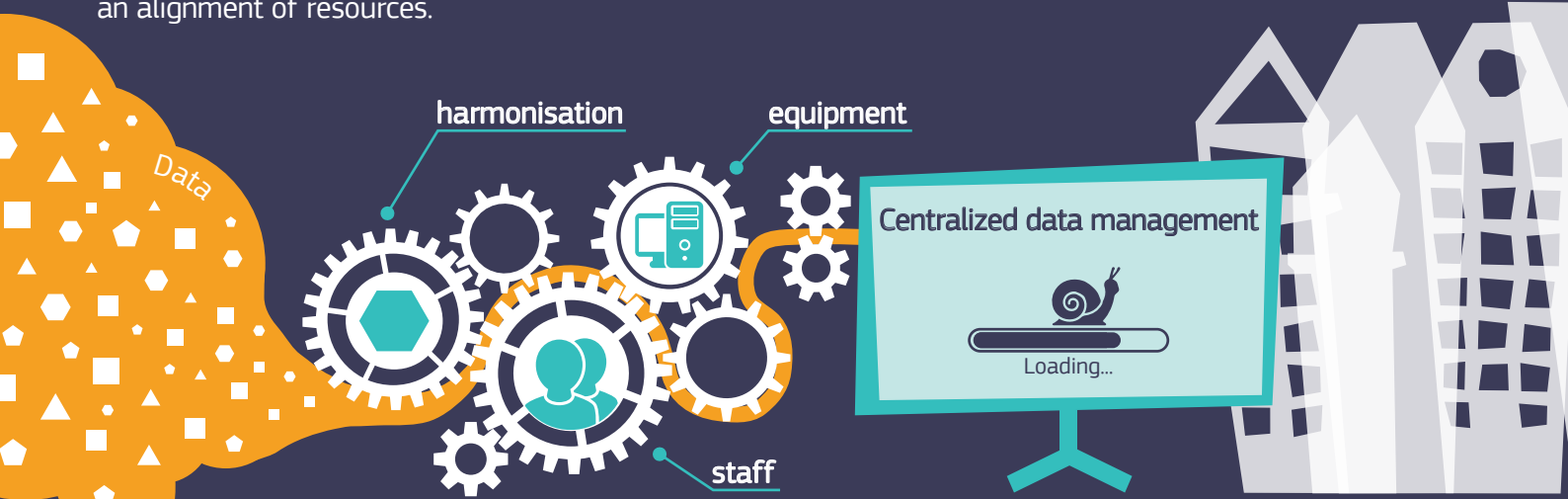
A priority for the Western Balkans is to develop complete and accurate *emission inventories*.

Shortcomings in emission data affect the reliability of air quality models and impair their ability to quantify the impact of different sources. Such information is essential for the development of effective abatement strategies.

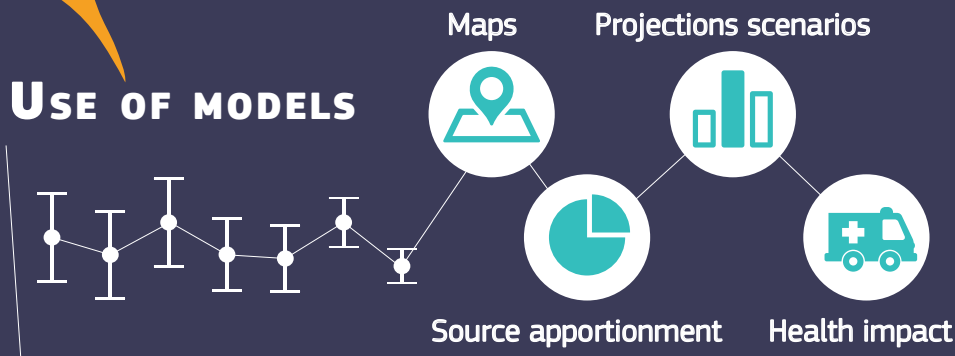


MONITORING NETWORKS

Integrated **monitoring systems** that provide access to online data are needed in the Western Balkans to ensure timely and comprehensive analyses of the air quality situation. The accreditation of bodies in charge of the monitoring networks (maintenance and calibration of instrumentation) is an important step to improve the quality of the data. Inevitably in some cases, the effort to achieve higher quality standards may require an alignment of resources.



USE OF MODELS



Air quality modelling is needed to produce detailed maps, quantify the *influence of sources* and estimate the *impact and costs of air pollution*.

In addition, models support predictive analysis to provide a long-term perspective on environmental problems by identifying key issues and uncertainties.

GOVERNANCE

Due to the transboundary nature of certain pollutants, abatement strategies are necessary at the international level (Energy production, Agriculture) while other are more suitable to be tackled at the national or local levels (residential combustion, transport).

Many of the emission abatement measures have considerable potential *co-benefits for both air quality and climate* (Energy production, transport).



CLIMATE CHANGE



AIR QUALITY