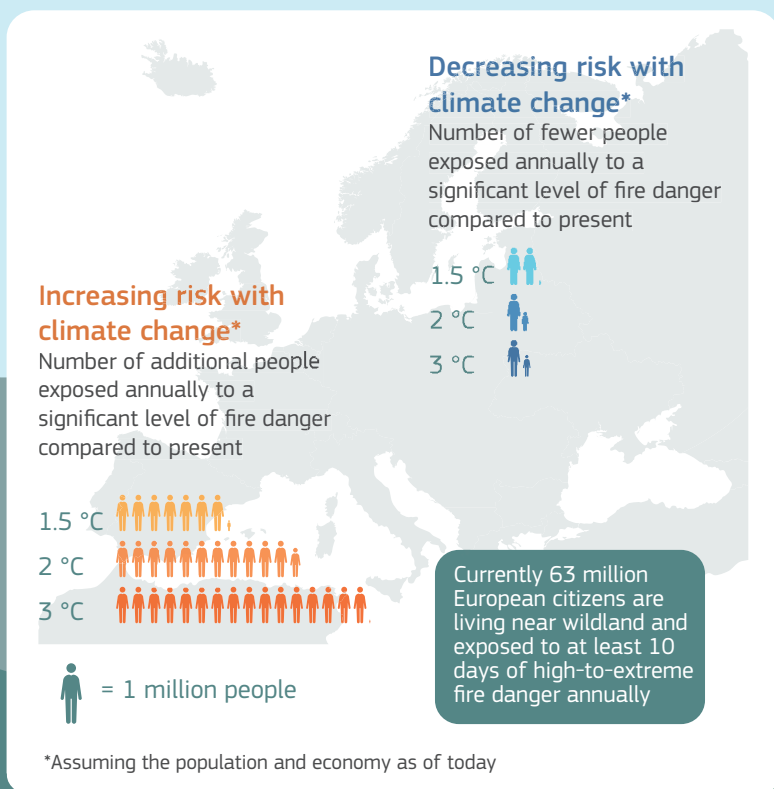
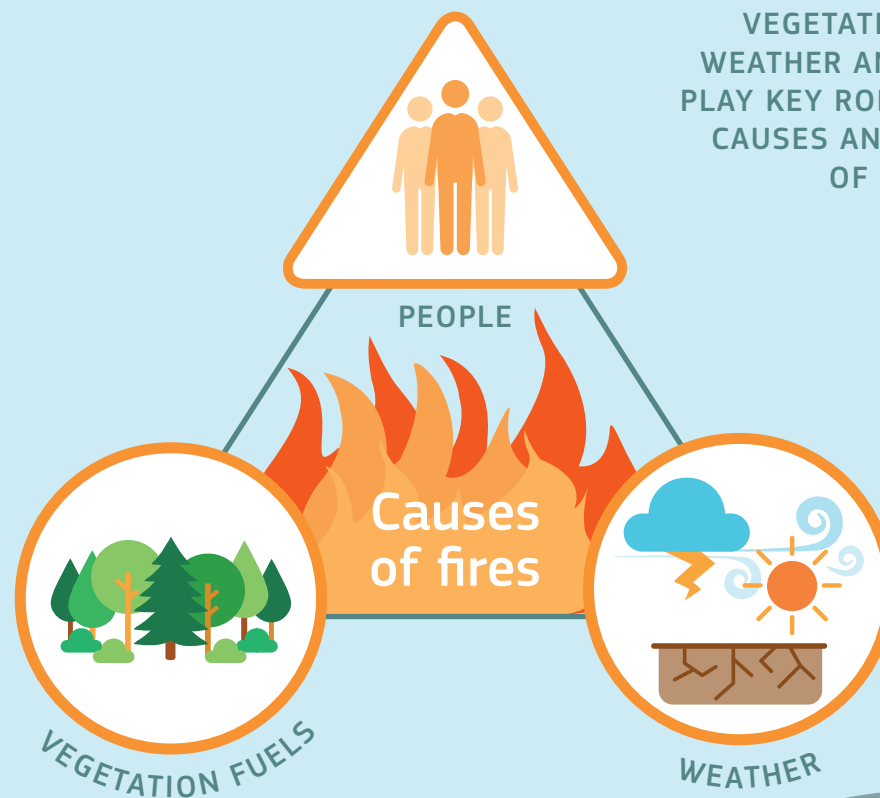


Wildfire danger in the EU & UK in a changing climate

VEGETATION FUELS, WEATHER AND PEOPLE PLAY KEY ROLES IN THE CAUSES AND EFFECTS OF WILDFIRES

Wildfires are most dangerous when they occur in the interface between human populations and wildland. The risk for these fires to happen is influenced by climate change, which may also hamper the ability of ecosystems to recover after the fires.



ADAPTATION OPTIONS



Public awareness campaigns

- How to reduce fire ignitions
- How to act in a wildfire



Landscape & vegetation management

- Limit fire propagation via reductions in vegetation continuity
- Remove vegetation near inhabited areas



Future planning

- Plant less flammable species
- Plant a mix of tree species