



National Institute for Public Health  
and the Environment  
*Ministry of Health, Welfare and Sport*

## *Local soil pollution*

*Frank Swartjes*

**EUSU Stakeholder Forum**  
**20 Okt 2021**



# OUTLINE

- ❑ Introduction
- ❑ Status of local soil pollution in Europe
- ❑ Focus on the indicator



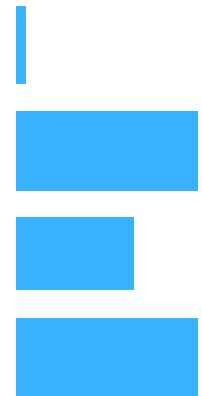
# RISK-BASED ASSESSMENT PROCEDURES

☐ EEA 38: available for 30 to 0 years

☐ Different stages:

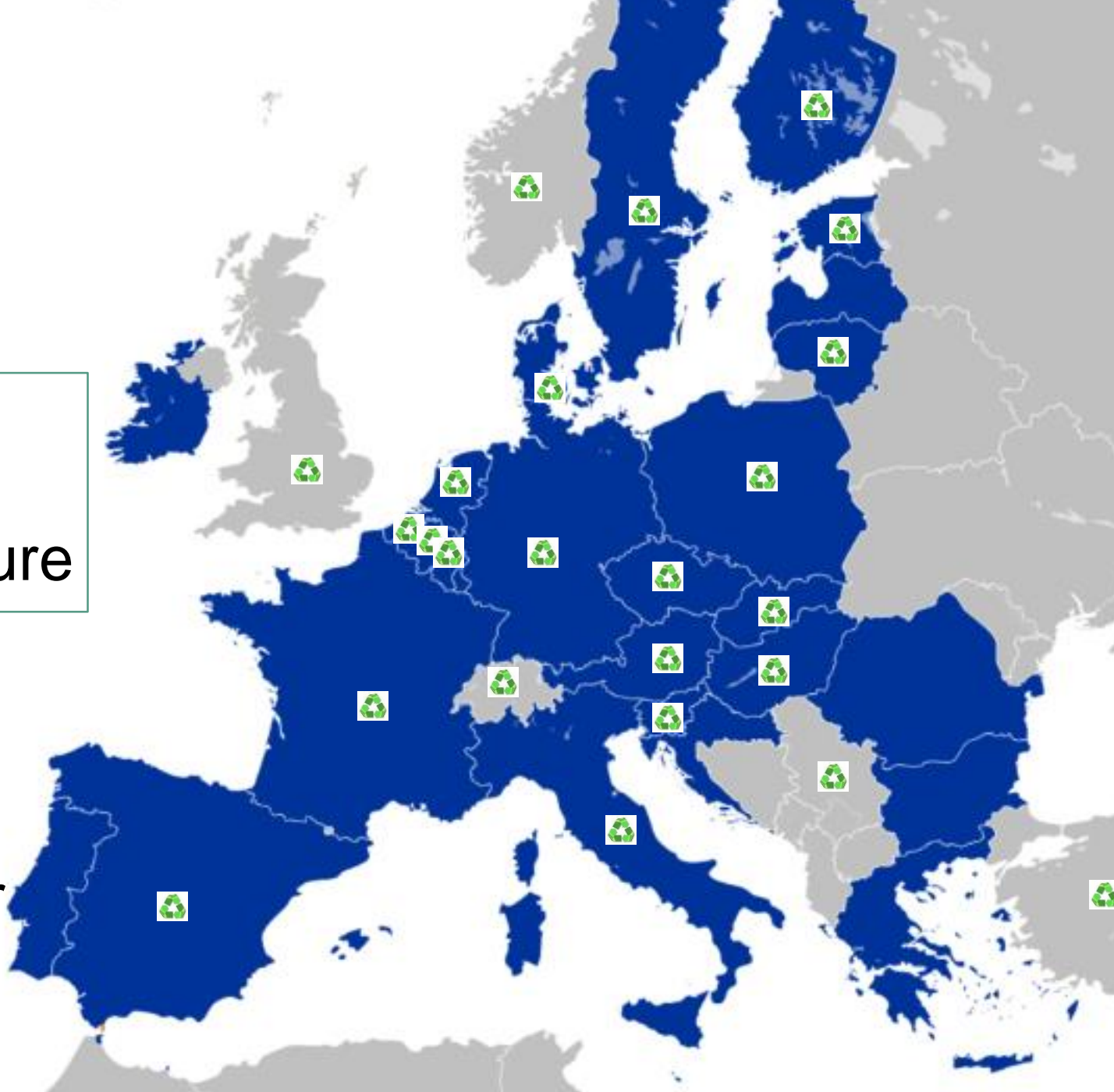
1. Maximum risk control/ zero risk
2. Thresholds: good/bad
3. Frameworks (incl site specific RA)
4. Functional approach
5. Sustainable approach

Application  
In Europe



 = Risk-based procedure

17 out of 27  
EU Member  
States

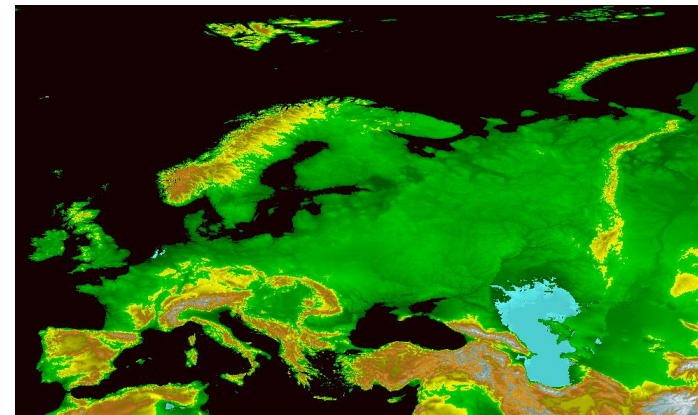




# HARMONIZATION

→ Toolbox, including

- Standardized tools
- Flexible tools





# OUTLINE

- ✓ Introduction
- ☐ Status of soil pollution in Europe
- ☐ Focus on the indicator



# INDICATOR LSI0003

- Land take
- Soil moisture
- Imperviousness and imperviousness change
- Organic soil carbon
- Progress in the management of contaminated sites**



# 6 CATEGORIES

- Status 1: polluting activities took/are taking place
- Status 2: in need of investigation/under investigation
- Status 3: have been investigated, but no remediation is needed.
- Status 4: remediation needed
- Status 5: remediation ongoing
- Status 6: remediation completed







# SOME CONCLUSIONS

- ❑ Complete response from 29 out of 39 countries (25 EU)

## EU-28:

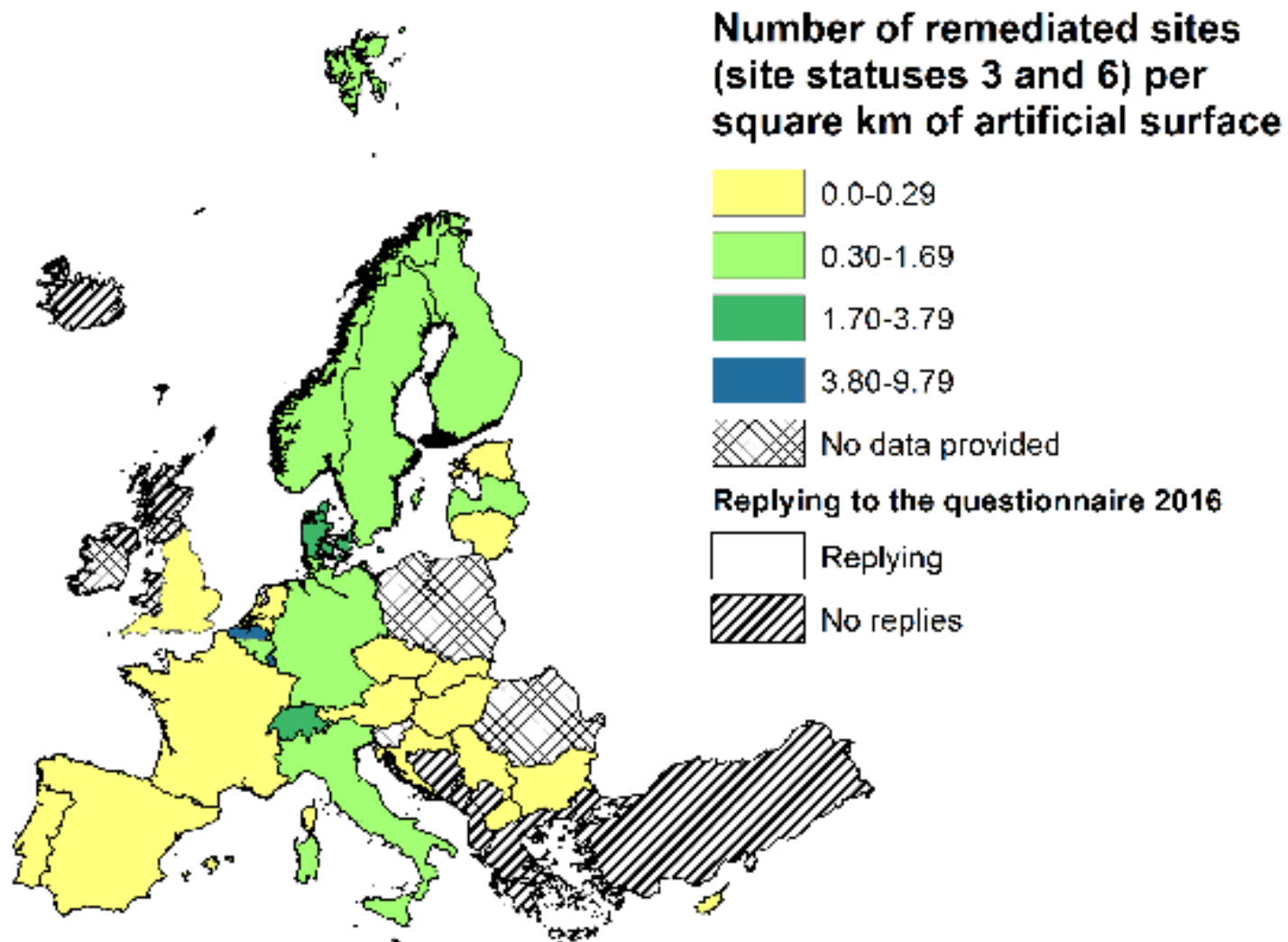
- ❑ 2.8 million sites where polluting activities took place/ are taking place

## EEA-38:

- ❑ (>>) 650,000 identified suspected sites
- ❑ (>) 65,500 remediated



# RESPONSE





# OUTLINE

- ✓ Introduction
- ✓ Status of soil pollution in Europe
- Focus on the indicator



# UPDATE INDICATOR LSI0003

1. Existing indicator; reinterpretation (update)  
existing data from 2016: *Update 2021*
  2. Evaluation indicator: *From February 2022*
- Trade-off quality and continuity



# ISSUES WITH LSI0003

- ❑ Different national **monitoring** networks, with different goals
- ❑ Lack of (decent) monitoring networks
- ❑ Change in set-up monitoring networks



# ISSUES WITH LSI0003

- Soil versus groundwater
- Compounds specific (Hg?)
- Contribute to harmonization of risk assessment tools in Europe



# ISSUES WITH LSI0003

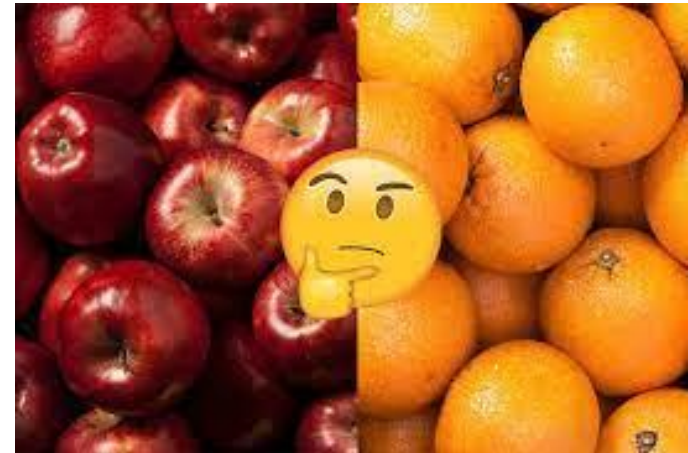


Definitions



Impact from different thresholds

- Purpose
- Protection target(s)
- Protection level
- Land use-specific
- Soil properties-specific
- Etc

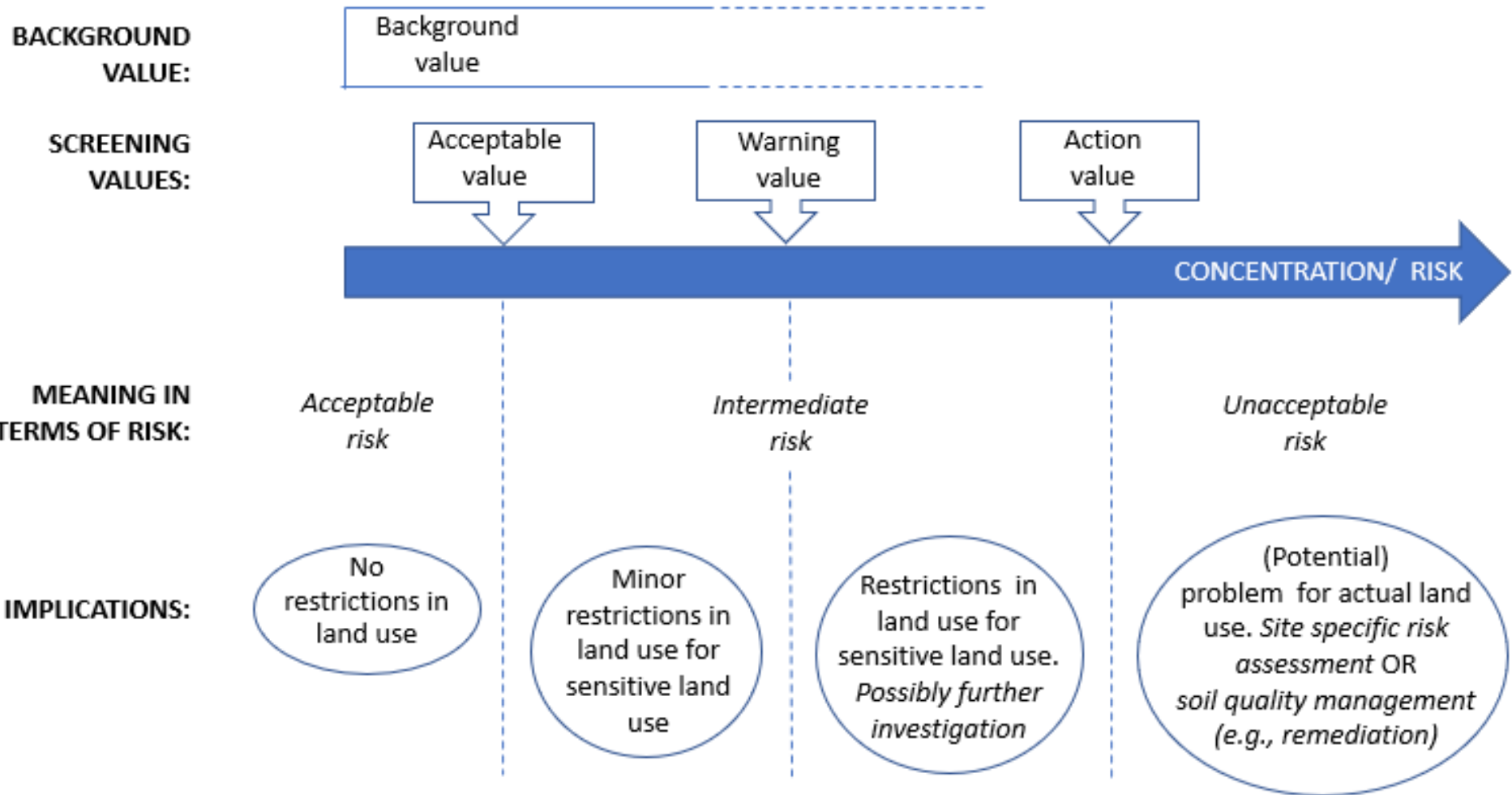






# SCREENING VALUES

*adapted from Heracles*







# THE CYNIC



“Is it an evaluation of the status of local soil pollution or an evaluation of the thresholds”?



# DIFFUSE SOIL POLLUTION

- Indicator needed
- Consensus definition (agriculture, but also urban)
- Characteristic: source present/ policy on source regulation
- Monitoring networks?



EUSO Stakeholder  
Forum participants:  
**THANK YOU**  
for your  
**ATTENTION !**



→ [frank.swartjes@rivm.nl](mailto:frank.swartjes@rivm.nl)  
[www.RIVM.NL](http://www.RIVM.NL)