



SLOVENIA

and its collaboration with
the European Commission's
science and knowledge service



Who are we?

The Joint Research Centre (JRC) is a department of the European Commission. Our mission is to support EU policies with scientific evidence throughout the entire policy process. We are independent of national, commercial or stakeholder interests.

Our 2 800 staff are based in Belgium, Germany, Spain, Italy and the Netherlands. In addition to performing our own research, we make sense of collective scientific knowledge from multiple sources for smarter EU policies. Capacity building is one of our key roles. We often work in partnerships with universities, government offices, agencies and stakeholders.



JRC priorities

Most of our scientific work is undertaken in direct support to EU policies. We add value by providing knowledge or services that others are less well placed to provide. And we strive for excellence in all our activities.

In carrying out our work, integrity is a core value: in our approach to science, in the way we treat people, and in avoiding conflicts of interest. We strive always to deliver on our commitments, to promote an open exchange of knowledge and to foster innovation.

Our scientific work covers a wide range of EU policy domains: energy and transport; sustainability and climate; migration; economic questions; education and employment; food, nutrition and health; digital transformation; and innovation. We endeavour to address new societal challenges as they emerge.



Examples of cooperation



Growing-up competent in digital skills

The European Digital Competence Framework, 'DigComp', has been developed by the JRC as a tool to improve citizens' digital competences. Using this tool, the National Education Institute of Slovenia identified indicators that help teachers define digital needs of students and plan activities to develop their digital competences from kindergarten to high school.



Harmonising breast cancer care

Slovenia participates in the European Commission's Initiative on Breast Cancer which aims to improve and harmonise breast cancer care across Europe. The JRC coordinates technical and scientific aspects of this initiative. Based on input from, amongst others, Slovenia, the JRC has developed an interactive platform regarding screening, diagnosis, treatment and follow-up care.



Opportunities and challenges for coal regions in transition

In its report "EU Coal Regions: Opportunities and Challenges Ahead", JRC analysed the impact of the Paris Agreement on the coal mining sector and possibilities to transition towards greener energy production. Concrete actions are proposed to keep jobs and economic activities in regions, such as, Vzhodna Slovenija, for example by re-use of retired coal infrastructure and re-deployment of personnel.

Working together?



USING OUR LABS AND INFRASTRUCTURE

Since 2017 the JRC has opened up 16 of its physical research infrastructures to academia, research organisations and industry (including small and medium-sized businesses). There are opportunities for scientists to work and receive further training in JRC laboratories dealing with nuclear safety and security, chemistry, life sciences, physical sciences, ICT, and 'foresight' (the branch of scientific research that explores how the future will look).



► <https://europa.eu/!Mx93Uf>



SMART SPECIALISATION

The JRC hosts the Smart Specialisation Platform, which helps European countries and regions identify which research and innovation areas to invest in. The Platform takes into account a country or region's existing strengths and upcoming challenges. We have provided science-based advice for policymakers, businesses and research institutions. And we have developed more than one hundred Smart Specialisation Strategies for various European regions and Member States, e.g. for the agri-food and energy sectors. The Platform has helped foster many partnerships both within the EU and beyond.



► <https://europa.eu/!NQ77mM>

KNOWLEDGE CENTRES AND COMPETENCE CENTRES

The JRC hosts several Commission Knowledge Centres and Competence Centres. These Centres bring together experts, stakeholders and knowledge from both within and outside the European Commission. Knowledge Centres are built around topics, while Competence Centres focus on analytical tools. Together, they inform policymakers, stakeholders and the general public about the latest scientific findings that are relevant for policy. They provide contextualised evidence, reviews, data analysis and data visualisation.



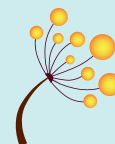
► <https://europa.eu/!DF34qN>

JRC SUPPORT FOR STANDARDISATION

Standardisation and harmonisation promote innovation and competitiveness. They also build consumer trust and are essential for the European single market. For these reasons, more than 70 % of the JRC's projects involve work on standardisation and harmonisation. The JRC also participates in more than 160 technical committees linked to standardisation organisations. The JRC also plays a key role in the development of reference materials. The JRC carries out research to lay the scientific foundations before a standard is adopted, for example, by developing analytical methods.



► <https://europa.eu/!qT77BB>



BRIDGING THE GAP BETWEEN SCIENTISTS AND POLICYMAKERS

The JRC regularly organises or facilitates events known as 'Science meets Regions' and 'Science meets Parliaments'. At these events, scientists and policymakers are brought together to learn about each other's challenges, tackle issues specific to a given region or country, build relationships and promote a culture of evidence-based policymaking.



► <https://europa.eu/!pY73yB>

ACCESSING OUR DATABASES AND MODELS

In line with our values of openness and transparency, we grant access to the JRC's services, databases and tools, including more than 100 models.



► <https://europa.eu/!nV43gg>

COLLABORATIVE DOCTORAL PARTNERSHIPS

In 2016, the JRC launched the Collaborative Doctoral Partnerships programme to establish strategic cooperation with institutions of higher education that have excellent research credentials and an international reputation. The programme is designed to train a new generation of doctoral students in specific scientific fields, with a focus on the science-policy interface.



► <http://europa.eu/!Tu68Ft>

USING OUR SITES AS LIVING LABS

The JRC is offering startups the chance to use 'living labs' at its sites in Ispra, Italy, and Petten, the Netherlands. We welcome applications from those working in the fields of mobility (ride sharing, last mile delivery, robotaxis) and digital energy (smart meters and sensors, data analytics). Interested parties wanting to test their tech in a controlled, city-like environment with access to state-of-the-art labs, technical support and scientific expertise should apply here.








► <https://europa.eu/!Pt64Nm>

Did you know?

- The JRC and the University of Ljubljana have launched a doctoral studentship on the security of the 'Internet of Things' within the JRC's Collaborative Doctoral Partnership initiative.
- In 2019, the JRC started a new partnership with the Jožef Stefan Institute and other 48 European nuclear safety organisations, within the European Joint Programme on Radioactive Waste Management (EURAD).
- In the JRC report 'The future of cities' you can read about the vibrant start-up ecosystem Ljubljana hosts.
- The Ministry of Education, Science and Sport and the National Assembly of Slovenia discussed with scientists the challenges of evidence-informed policymaking at an event in 2019 supported by the JRC.
- The Slovenian member of the JRC Board of Governors is Peter Volasko from the Ministry of Education, Science and Sport.
- Subscribe to the 'Science Flash for You' newsletter. Read in your language about our activities and research in partnership with and about your country:
<https://europa.eu/lhq74kB>

If you want to know more...

-  **SIGN UP FOR OUR NEWSLETTER**
<https://ec.europa.eu/jrc/en/jrc-newsletter>
-  **VISIT OUR WEB-SITE!**
<https://ec.europa.eu/jrc/en>
-  **EXPLORE OUR SCIENCE HUB AT**
<https://ec.europa.eu/jrc/en/about/science-hub>
-  **SEE WHICH MODELS AND DATABASES WE HAVE**
<https://ec.europa.eu/jrc/en/scientific-tools>
-  **LOOK AT OUR LATEST ANNUAL REPORT**
<https://europa.eu/lBb93uV>
-  **READ OUR STRATEGY**
https://ec.europa.eu/jrc/sites/jrcsh/files/jrc-strategy-2030_en.pdf
-  **COME WORK WITH US**
<https://ec.europa.eu/jrc/en/working-with-us/jobs>
-  **MEET US AT AN EVENT!**
<https://ec.europa.eu/jrc/en/events>

Your National Contact Points

- **CONTACT YOUR JRC NATIONAL CONTACT POINTS FOR MORE INFORMATION**
<https://ec.europa.eu/jrc/en/working-with-us/jrc-national-contact-points>

