


Joint Research Centre - JRC

# The European Commission's science and knowledge service

## "Mapping and Alignment of S3 Priorities in the Danube Region – S3 as a Basis for Enhanced R&I Cooperation in the SEE"

Conference on Supporting Smart Specialisation Strategies and Technology Transfer in South-East Europe, Bucharest, 18 June 2019

 #S3platform

Dr. Ales Gnamus

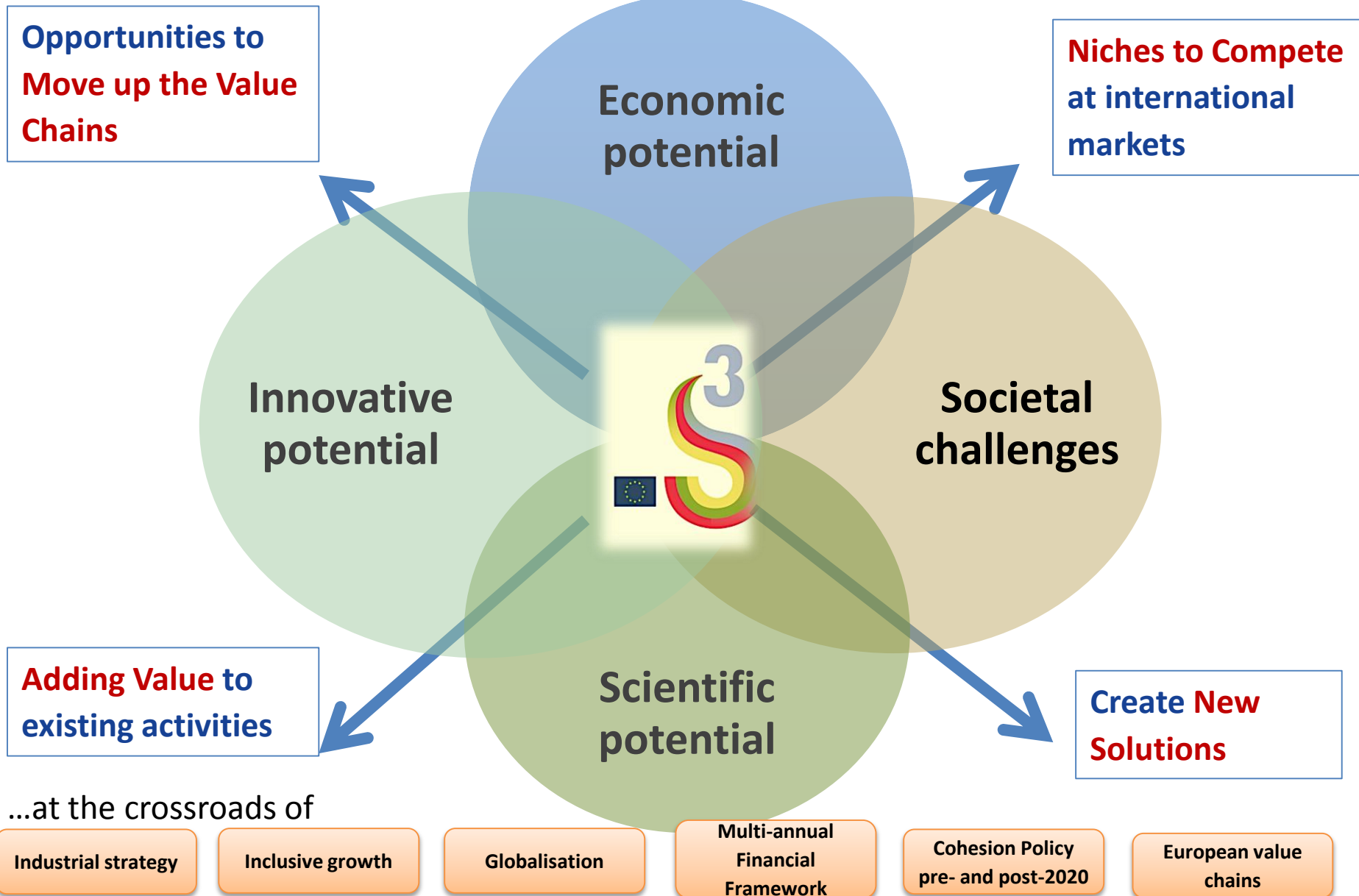


JRC Seville - B.3 Territorial Development

<https://s3platform.jrc.ec.europa.eu/>

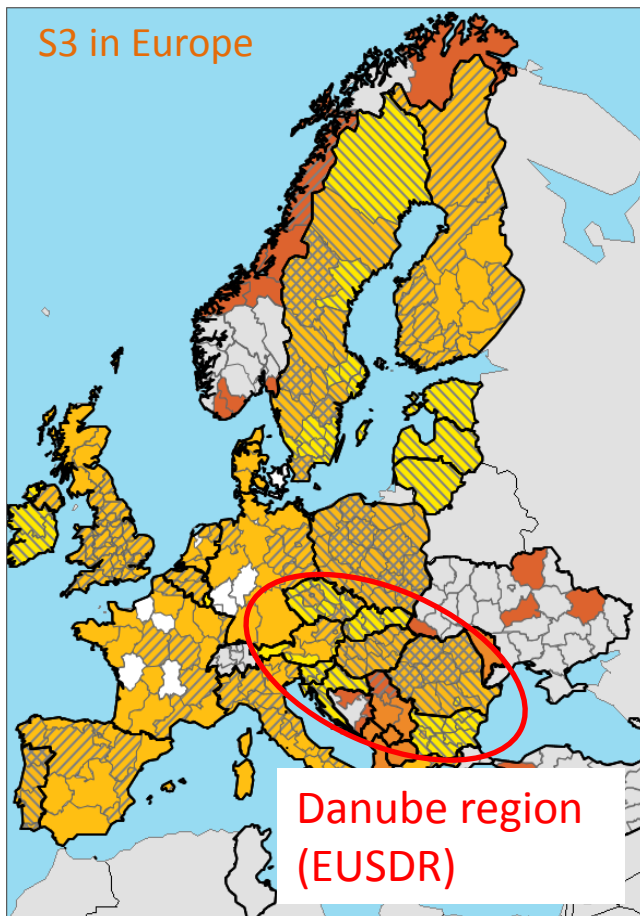


# Concept of Smart Specialisation (S3)



# Policy Premise – Objective:

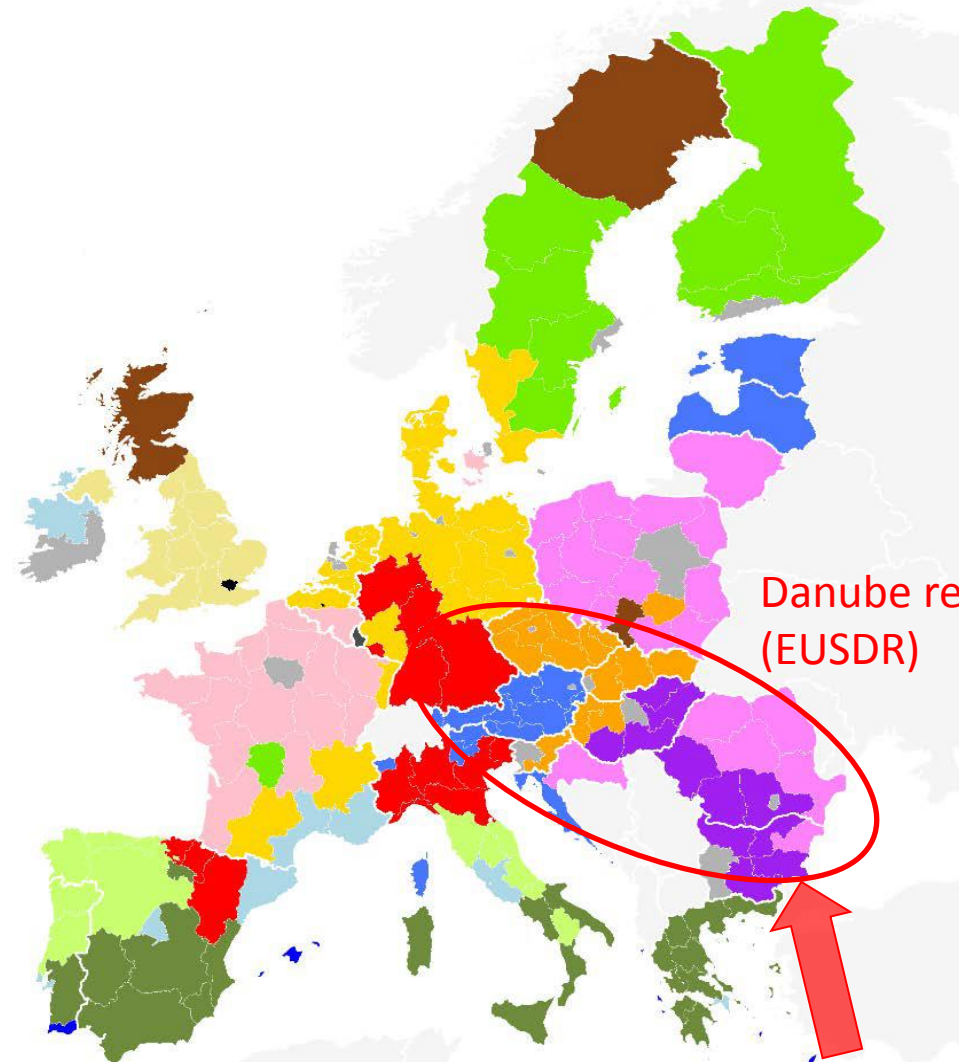
- **Smart Specialisation to enhance R&I cooperation at macro-regional level – hence in the Danube Region and in South-East Europe!**



## Methodology:

- Existing benchmarkings – regional Socio-Economic comparisons
- **Clustering S3 Domains/Priorities**
- Relative R&I Specialisation by H2020
- **Specialisation by clustered S3 Domains/Priorities encoded in Eye@RIS3 (JRC S3 Platform)**
- Recommendations for the Danube & SEE R&I cooperation

# Socio-Economic Regional Benchmarking: EU-28 regions, by cluster of socioeconomic features



## Legenda

### City regions

- Wealthy capital cities: diversified services
- Wealthy financial centres; foreigners
- Capitals & urban poles
- Urban areas: poorer empl. conditions; tourists

### Manufacturing

- High-income manuf. regions
- Medium-income manuf. regions
- Low-income manuf. regions
- Mining and quarrying regions

### Intermediate

- Plenty-of-jobs regions (private+public activities)
- Plenty-of-jobs regions (manufacturing+services)
- Regions with empl. Imbalances; public sector
- Regions with empl. Imbalances; tradit. manuf.

### Touristic

- Affluent touristic areas
- Touristic areas; traditional-economy

### Rural

- Sparsely populated regions
- Rural regions: traditional econ. activities & poor empl. conditions
- Very low-income rural regions; trad. manuf.

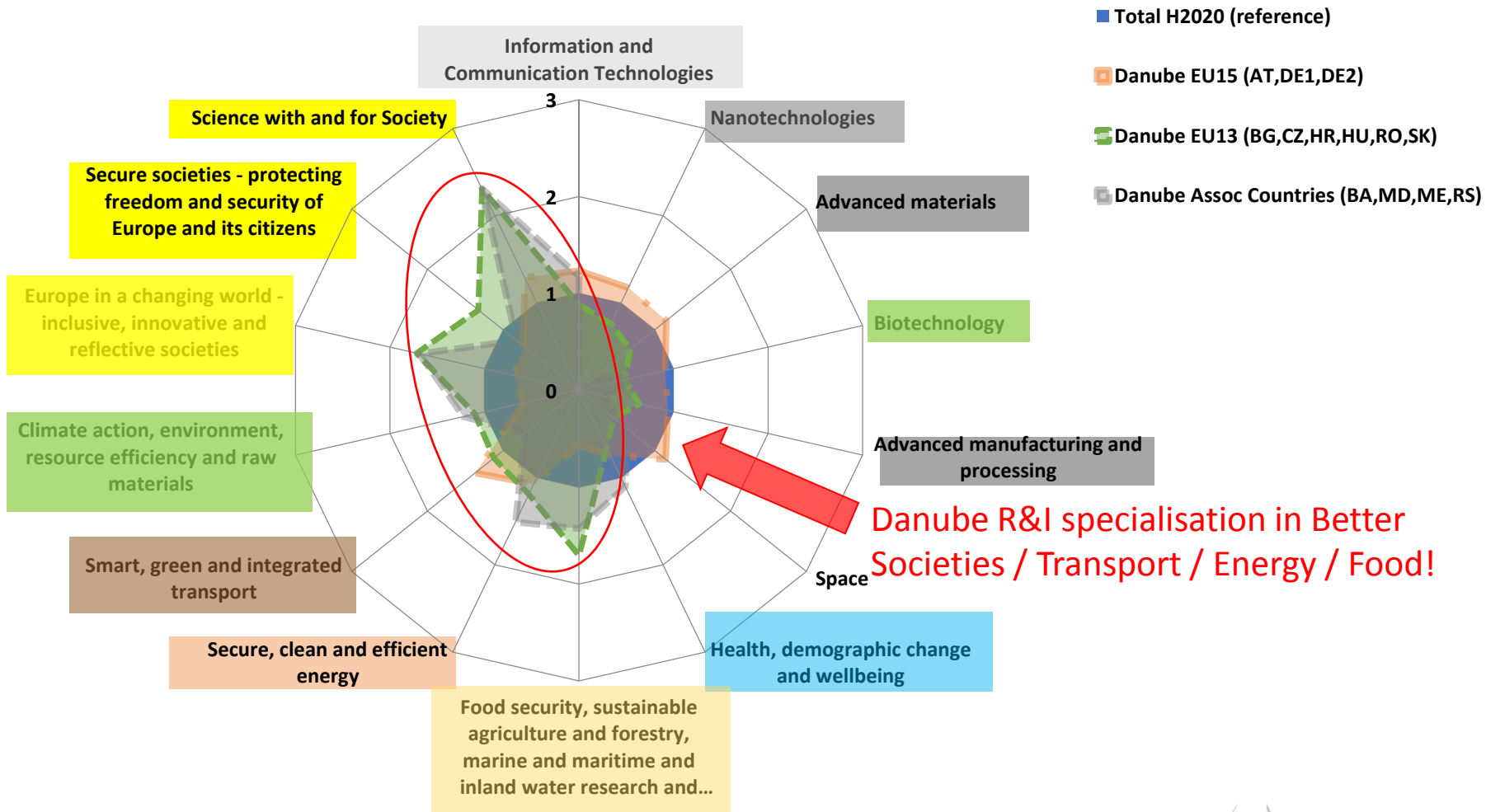
Source: Pagliacci et al. (2018)

Large heterogeneity + missing data for WBC, MD&UA!

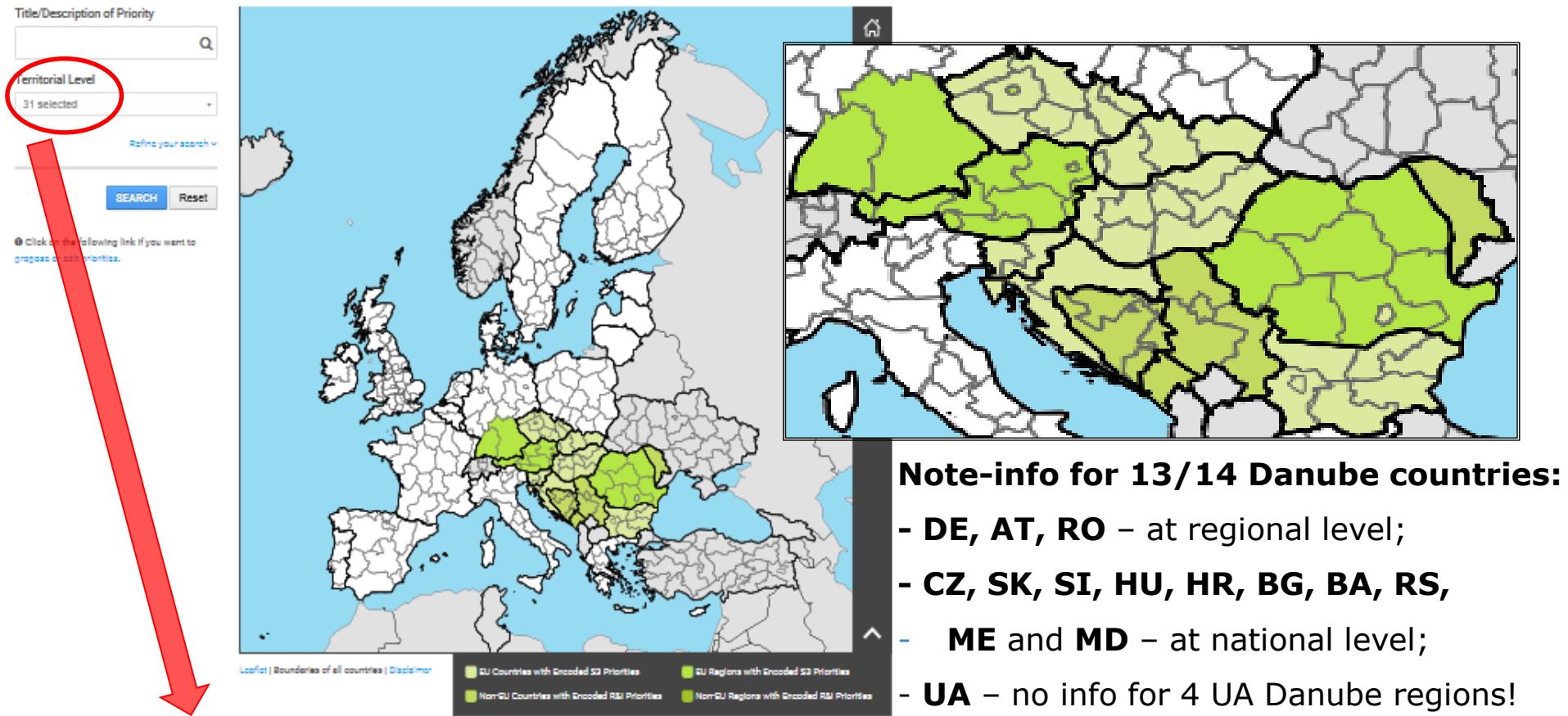
# Clustering of S3 Domains/Priorities: by connectivity of R&I activities and semantics

S3 Domain/Priority	Main Keywords
<b>Better Societies</b>	Governance, Social and Societal issues, Culture, Creative, Arts, Services, Leisure, Entertainment, Tourism, Business, Financial, Security, etc.
<b>Electronic Technologies &amp; ICT</b>	Industry 4.0, Computers, Software, Optics, Photonics, etc.
<b>Sustainable Energy</b>	Energy Efficiency, Renewables, Smart Grids, etc.
<b>Climate &amp; Environmental Sciences</b>	Biotechnology, Natural sciences, Conservation, Climate mitigation, Earth observation, Flora & Fauna, Pollution, Ocean & Seas, etc.
<b>Advanced Manufacturing &amp; Materials</b>	Process Industries, Machinery, KETs, Micro- & Nano-technology, etc.
<b>Agro-Food</b>	Farming, Rural, Sustainable agriculture, Healthy food, Wine, Beverages, Agricultural products, Food Processing, Forestry, Wood, Freshwater and Marine foods, Food Safety, etc.
<b>Health &amp; Wellbeing</b>	Medicine, Medical technologies, Pharmaceutical, Leisure, Spa, Healthcare, etc.
<b>Transport &amp; Mobility</b>	Vehicles, Aero/Space, Shipping, Transport Safety, Transport Security, Urban issues, Smart Cities, etc.
<b>Other</b>	Basic sciences, Mathematics, Physics, Fundamental research, Blue sky research, etc.

# Relative R&I Specialisation by H2020 Projects in clustered S3 Domains



# S3/R&I specialisation of Danube territories: as encoded by Eye@RIS3



**Danube: 31 territorial units (countries/regions) with info at relevant territorial level**

**Encoded S3/R&I priorities grouped and clustered into 8+1 categories/R&I Domains**

# Specialisation by clustered S3 Domains: Analysis of S3 Priorities encoded in "Eye@RIS3"

**Total 178 S3 (R&I - for Non-EU) priorities clustered in 8+1 S3 Domains**

S3 Domain/Priority	No. of related S3 Priorities in the Danube territories (MS/regions)	Coverage by EUSDR Priority Actions
Better Societies	31	6 (PAs: 3,8,9,10,11 + PA7)
Electronic Technologies & ICT	21	2 (PA7 + PA11)
Sustainable Energy	18	3 (PA2 + PA7)
Climate & Environ. Sciences	24	6 (PAs: 4,5,6,11 + PA7)
Advanced Manuf. & Materials	32	1 (PA7 + partially PA8)
Agro-Food	21	2 (PA7 + PA11 + partially PAs: 3,4)
Health & Wellbeing	19	1 (PA7 + partially PAs 9,10)
Transport & Mobility	11	3 (PA1 + PA7 + PA11)
Other (Mathematic & Physics)	1	1 (P7 + partially PA9)
<b>Total</b>	<b>178</b>	<b>All EUSDR PAs covered</b>



# Danube Strategy Pillars with Priority Actions vs. S3 Domains of Interest:

S3 Domains /Priorities	Connecting the region (PAs 1-3)			Protecting the Environ. (PAs 4-6)			Building Prosperity (PAs 7-9)			Strengthening the region (PAs 10-11)		Total
	Mobility & Multimod.	Sust. Energy	Culture & Tourism	Water quality	Environm. risks	Biodivers, landscapes air & soil	Knowledge society	Competitiv.	People & Skills	Inst.capacity & Cooperation	Security	
Better Societies			16				8	1	2	4	9	31
Electronic Techn.&ICT							21				9	21
Sust.Energy		18					18				0	18
Climate & Env.Science				11	23	10	24				0	24
Advanced Manuf. & Materials							32	23				32
Agro-Food			2	2			21				0	21
Health & Wellbeing							19					19
Transport & Mobility	11						11				0	11
Other							1		1			1

# Potential for S3 Cooperation in Danube on prevailing S3 Domains:

S3 Domain/Priority	Correlation of S3 Domains with Danube Priority Areas	Potential for Danube wide R&I Collaboration with broader EU impact	No. of related S3 Priorities in the Danube territories (MS/regions)
<b>Better Societies</b>	+++++	+++++	31
Electronic Technologies & ICT	+++	+++	21
Sustainable Energy	++++	++++	18
Climate & Environmental Sciences	++++	+++	24
Advanced Manufacturing & Materials	++	++++	32
Agro-Food	+++	++++	21
Health & Wellbeing	+++	++	19
Transport & Mobility	+++	++	11
Other	-	-	1

# ...S3 Forging Strategic Partnerships and Cooperation btw WBC and EU...

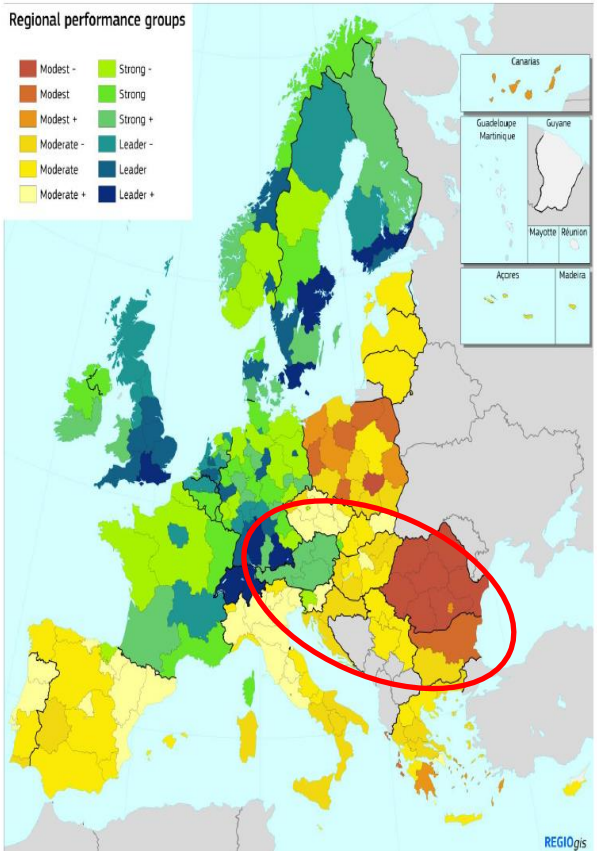
## Participation in the Thematic S3 Partnerships 2019

### Regional Innovation Scoreboard

2018

Regional performance groups

- Modest -
- Modest
- Modest +
- Moderate -
- Moderate
- Moderate +
- Strong -
- Strong
- Strong +
- Leader -
- Leader
- Leader +



EUSDR area 

Agri-Food



Energy



Industrial Modernisation



# Recommendations for Danube & SEE: to improve R&I policies and cooperation/support instruments

- Existing benchmarkings i.e. regional Socio-Economic comparisons show **lack of data coverage of WBC/Neighbourhood MRS partners and unconventional categorisation for SEE**
- **H2020 collaboration indicates strengths** in some domains and relative R&I specialisation of countries/regions and Danube territory
- **Better Societies** (incl. Services, Culture, Tourism, Creative innovation), **Sustainable Energy, Advanced Manufacturing & Materials** and **Agro-Food** are **S3 Domains/Priorities** with the greatest cooperation potential for the Danube region with broader EU impact
- Active **engagement** of Danube & SEE territories in **Thematic S3 Partnerships** and **European Strategic Cluster Partnerships for Smart Specialisation Investment** will ensure support through line EU policies (GROW, CONNECT, AGRI, ENV, REGIO, NEAR) and enhance cooperation of the SEE territories with the EU peers (RTD)



# Thanks for your Attention!

## Questions?

You can find us at <http://s3platform.jrc.ec.europa.eu/home>

[Ales.GNAMUS@ec.europa.eu](mailto:Ales.GNAMUS@ec.europa.eu)