



THE NETHERLANDS

and its collaboration with
the European Commission's
science and knowledge service



Who are we?

The Joint Research Centre (JRC) is a department of the European Commission. Our mission is to support EU policies with scientific evidence throughout the entire policy process. We are independent of national, commercial or stakeholder interests.

Our 2 800 staff are based in Belgium, Germany, Spain, Italy and the Netherlands. In addition to performing our own research, we make sense of collective scientific knowledge from multiple sources for smarter EU policies. Capacity building is one of our key roles. We often work in partnerships with universities, government offices, agencies and stakeholders.



JRC priorities

Most of our scientific work is undertaken in direct support to EU policies. We add value by providing knowledge or services that others are less well placed to provide. And we strive for excellence in all our activities.

In carrying out our work, integrity is a core value: in our approach to science, in the way we treat people, and in avoiding conflicts of interest. We strive always to deliver on our commitments, to promote an open exchange of knowledge and to foster innovation.

Our scientific work covers a wide range of EU policy domains: energy and transport; sustainability and climate; migration; economic questions; education and employment; food, nutrition and health; digital transformation; and innovation. We endeavour to address new societal challenges as they emerge.



Examples of cooperation



Maintaining a global database on CO2 emissions

Building on a Dutch initiative, the JRC and the Dutch Environmental Assessment Agency have developed a database on trends in CO2 emissions. The database is continuously updated with information, to help policy-makers devise strategies to slow climate change.



Cultural and creative cities

Leeuwarden, as a 2018 European Capital of Culture, welcomed representatives from 25 European cities for an interactive workshop organised by the JRC. The JRC's 'Cultural and Creative Cities Monitor' helped to identify local strengths. This led to cities developing practical strategies to raise their profiles as cultural and creative cities.



Using open-source data to improve cyber-security

The JRC developed software to gather open-source data from publicly available sources for analysis to boost cyber-security. The University of Applied Science in Leiden uses this software for their degree programme in forensic IT. The university provides the JRC with regular feedback and it is thanks to this feedback that the JRC can improve its software, for wider use across Europe.

Working together?



USING OUR LABS AND INFRASTRUCTURE

Since 2017 the JRC has opened up 16 of its physical research infrastructures to academia, research organisations and industry (including small and medium-sized businesses). There are opportunities for scientists to work and receive further training in JRC laboratories dealing with nuclear safety and security, chemistry, life sciences, physical sciences, ICT, and 'foresight' (the branch of scientific research that explores how the future will look).



► <https://europa.eu/!Mx93Uf>



SMART SPECIALISATION

The JRC hosts the Smart Specialisation Platform, which helps European countries and regions identify which research and innovation areas to invest in. The Platform takes into account a country or region's existing strengths and upcoming challenges. We have provided science-based advice for policymakers, businesses and research institutions. And we have developed more than one hundred Smart Specialisation Strategies for various European regions and Member States, e.g. for the agri-food and energy sectors. The Platform has helped foster many partnerships both within the EU and beyond.



► <https://europa.eu/!NQ77mM>

KNOWLEDGE CENTRES AND COMPETENCE CENTRES

The JRC hosts several Commission Knowledge Centres and Competence Centres. These Centres bring together experts, stakeholders and knowledge from both within and outside the European Commission. Knowledge Centres are built around topics, while Competence Centres focus on analytical tools. Together, they inform policymakers, stakeholders and the general public about the latest scientific findings that are relevant for policy. They provide contextualised evidence, reviews, data analysis and data visualisation.



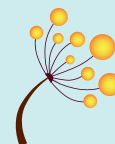
► <https://europa.eu/!DF34qN>

JRC SUPPORT FOR STANDARDISATION

Standardisation and harmonisation promote innovation and competitiveness. They also build consumer trust and are essential for the European single market. For these reasons, more than 70 % of the JRC's projects involve work on standardisation and harmonisation. The JRC also participates in more than 160 technical committees linked to standardisation organisations. The JRC also plays a key role in the development of reference materials. The JRC carries out research to lay the scientific foundations before a standard is adopted, for example, by developing analytical methods.



► <https://europa.eu/!qT77BB>



BRIDGING THE GAP BETWEEN SCIENTISTS AND POLICYMAKERS

The JRC regularly organises or facilitates events known as 'Science meets Regions' and 'Science meets Parliaments'. At these events, scientists and policymakers are brought together to learn about each other's challenges, tackle issues specific to a given region or country, build relationships and promote a culture of evidence-based policymaking.



► <https://europa.eu/!pY73yB>

ACCESSING OUR DATABASES AND MODELS

In line with our values of openness and transparency, we grant access to the JRC's services, databases and tools, including more than 100 models.



► <https://europa.eu/!nV43gg>

COLLABORATIVE DOCTORAL PARTNERSHIPS

In 2016, the JRC launched the Collaborative Doctoral Partnerships programme to establish strategic cooperation with institutions of higher education that have excellent research credentials and an international reputation. The programme is designed to train a new generation of doctoral students in specific scientific fields, with a focus on the science-policy interface.



► <http://europa.eu/!Tu68Ft>

USING OUR SITES AS LIVING LABS

The JRC is offering startups the chance to use 'living labs' at its sites in Ispra, Italy, and Petten, the Netherlands. We welcome applications from those working in the fields of mobility (ride sharing, last mile delivery, robotaxis) and digital energy (smart meters and sensors, data analytics). Interested parties wanting to test their tech in a controlled, city-like environment with access to state-of-the-art labs, technical support and scientific expertise should apply here.








► <https://europa.eu/!Pt64Nm>

Did you know?

- Dutch regions are coordinating inter-regional investments in innovative research areas, such as, the bio-economy, personalised medicine, and photonics, in a partnership under the Smart Specialisation Platform, which the JRC hosts.
- Detection systems at Schiphol Airport use knowledge from the JRC nuclear detection training for law enforcement officers.
- The JRC supported 'Science meets Regions' an innovation camp exploring future scenarios for urban development in Nijmegen and the Belgian city of Ghent.
- Utrecht University, the University of Wageningen and Radboud University Nijmegen run collaborative doctoral partnerships with the JRC. These partnerships allow doctoral students to spend part of their studies at the JRC learning about the science policy-interface.
- The Dutch member of the JRC Board of Governors is Erik Drop from the Netherlands Organisation for applied scientific research (TNO).
- Subscribe to the 'Science Flash for You' newsletter. Read in your language about our activities and research in partnership with and about your country:
<https://europa.eu/lvm47rj>

If you want to know more...

-  **SIGN UP FOR OUR NEWSLETTER**
<https://ec.europa.eu/jrc/en/jrc-newsletter>
-  **VISIT OUR WEB-SITE!**
<https://ec.europa.eu/jrc/en>
-  **EXPLORE OUR SCIENCE HUB AT**
<https://ec.europa.eu/jrc/en/about/science-hub>
-  **SEE WHICH MODELS AND DATABASES WE HAVE**
<https://ec.europa.eu/jrc/en/scientific-tools>
-  **LOOK AT OUR LATEST ANNUAL REPORT**
<https://europa.eu/!Bb93uV>
-  **READ OUR STRATEGY**
https://ec.europa.eu/jrc/sites/jrcsh/files/jrc-strategy-2030_en.pdf
-  **COME WORK WITH US**
<https://ec.europa.eu/jrc/en/working-with-us/jobs>
-  **MEET US AT AN EVENT!**
<https://ec.europa.eu/jrc/en/events>

Your National Contact Points

- **CONTACT YOUR JRC NATIONAL CONTACT POINTS FOR MORE INFORMATION**
<https://ec.europa.eu/jrc/en/working-with-us/jrc-national-contact-points>

