



ОБЩИНА ГАБРОВО



WASTE MANAGEMENT IN GABROVO MUNICIPALITY

Regional system for non-hazardous waste

Denitsa Koleva

Ecologist, Regional landfill for non-hazardous waste



THE HISTORY

2011

RESCIEVED A PERMIT

2012

SIGNED A GRANT CONTRACT FOR THE REGIONAL SYSTEM FOR WASTE TREATMENT

2013

START OF THE BUILDING PROCES

2014

ACTIVE WORK WITH THE POPULATION AND ACTIVE CONSTRUCTION OF THE LANDFILL

2015

COMMISSIONING OF THE REGIONAL SYSTEM AND ESTABLISHING THE **TWO-COMPONENT MODEL FOR SEPARATE COLLECTION OF WASTE**





WASTE MANAGEMENT FROM THE REGIONAL SYSTEM FOR WASTE TREATMENT IN GABROVO POINT OF VIEW





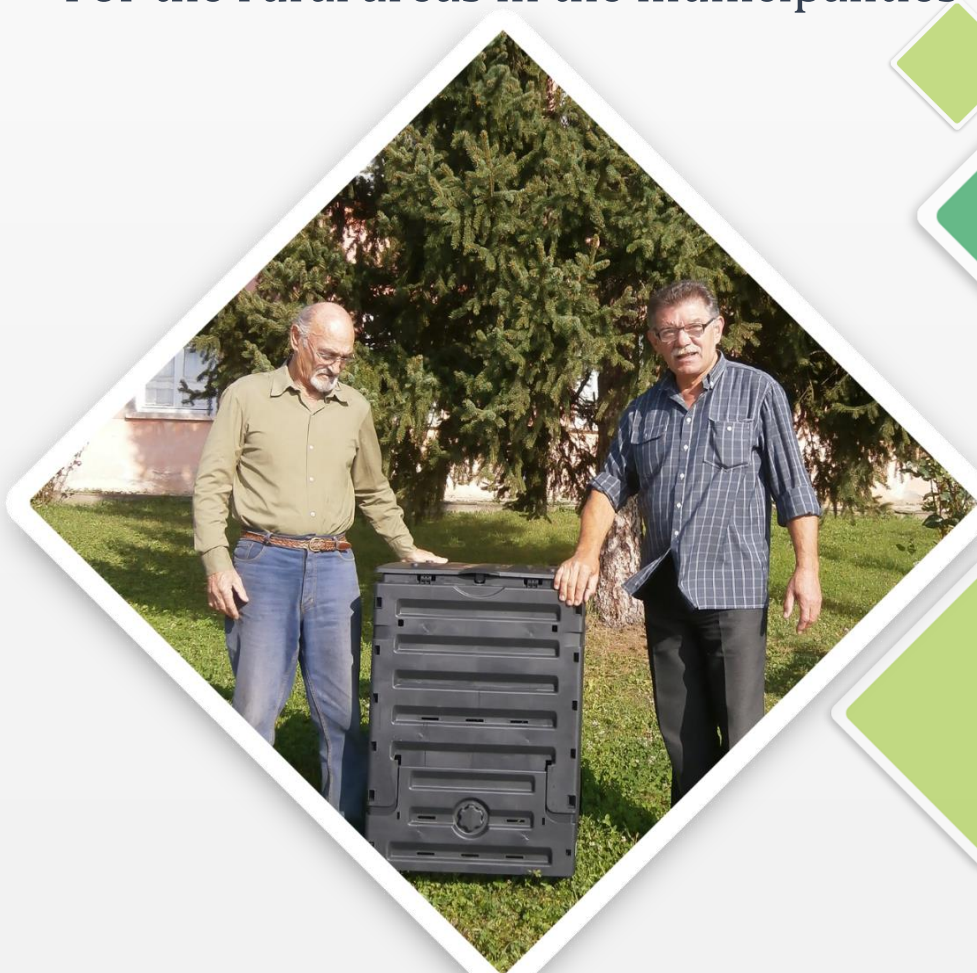
SEPARATE COLLECTION OF WASTE: **DRY AND WET FRACTION**



TWO BINS



HOME COMPOSTING
For the rural areas in the municipalities



DRY FRACTION

Contains mainly recyclable and other non biodegradable household waste (paper, glass, plastics, metals, textile, rubber etc.)

WET FRACTION

Contains biodegradable waste (kitchen waste, waste from marketplaces, gardening waste etc.)



SEPARATE COLLECTION OF WASTE: **ADDITIONAL SYSTEMS**

PACKAGING WASTE – SEPARATE COLLECTION OF PAPER, PLASTIC, GLASS AND METAL PACKAGINGS;

USED BATTERIES – 73 BINS FOR THEIR SEPARATE COLLECTION, SITUATED IN ADMINISTRATIVE BUILDINGS;

ELECTRICAL AND ELECTRONIC EQUIPMENT – MOBILE SYSTEM FORM COLLECTION;

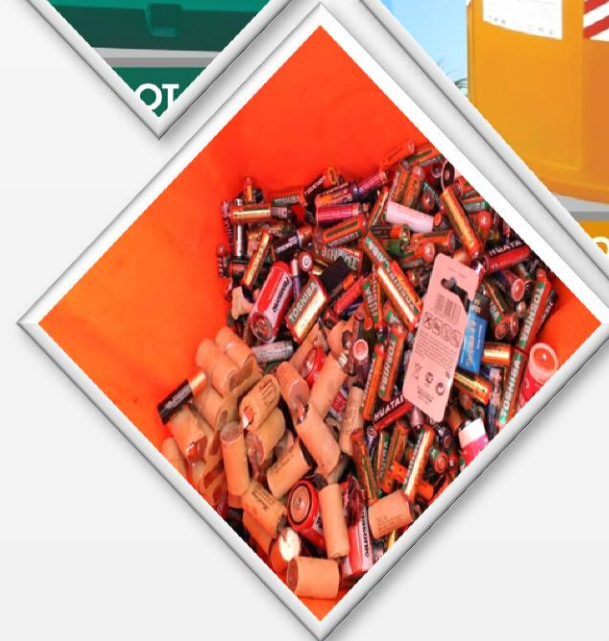
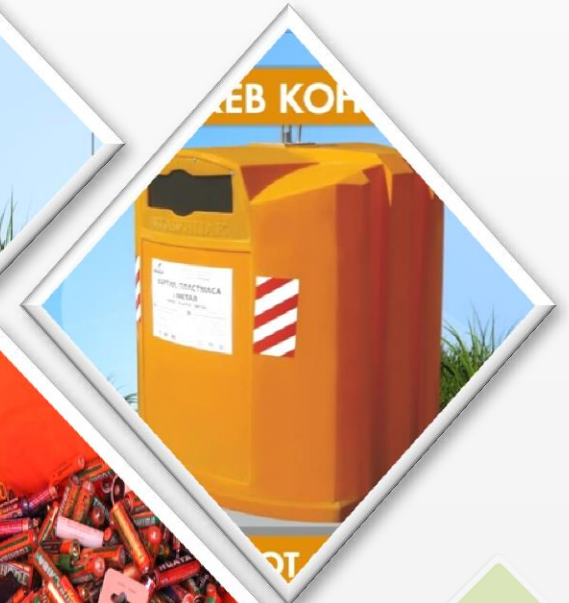
GARDENING WASTE – COLLECTION BY SCHEDULE OR FREE OF CHARGE ACCEPTANCE OF THE WASTE AT THE REGIONAL SYSTEM;

CONSTRUCTION WASTE, GENERATED BY THE HOUSEHOLD–

COLLECTION BY SCHEDULE OR FREE OF CHARGE ACCEPTANCE OF THE WASTE AT THE REGIONAL SYSTEM;

LARGE HOUSEHOLD ITEMS (MAINLY FURNITURE)–

COLLECTION BY SCHEDULE OR FREE OF CHARGE ACCEPTANCE OF THE WASTE AT THE REGIONAL SYSTEM.

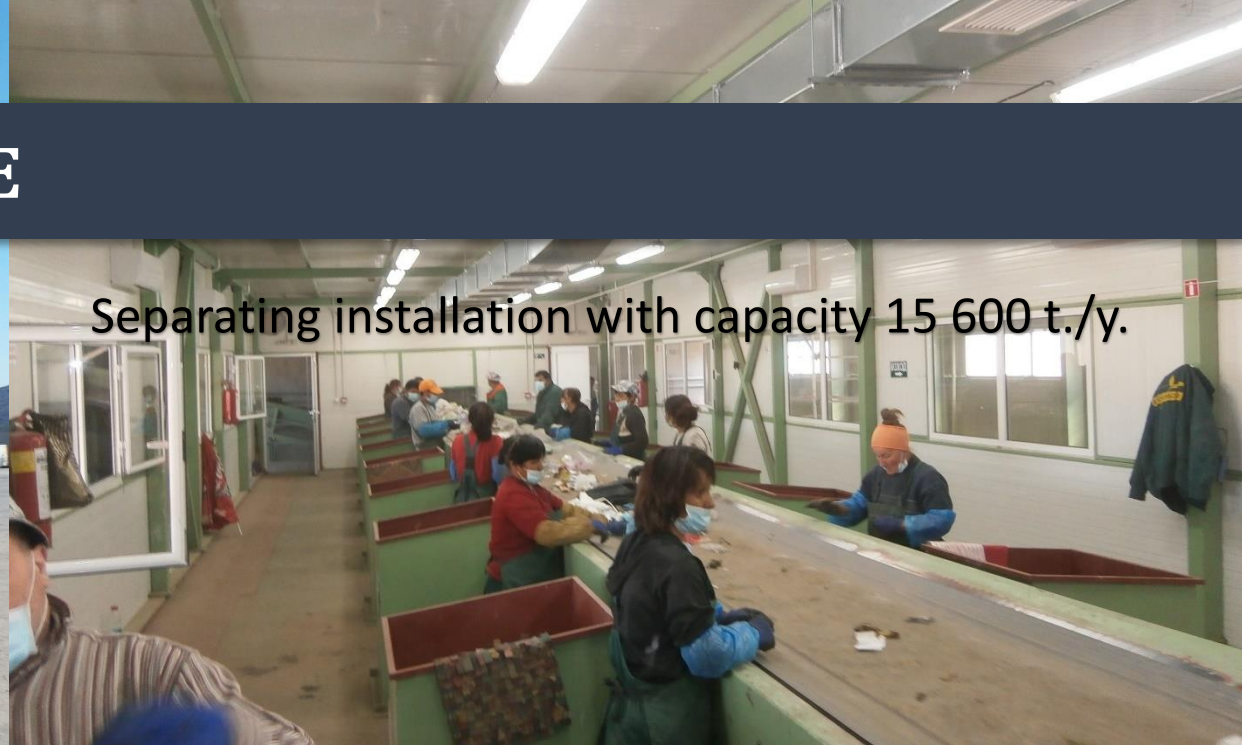




THE INFRASTRUCTURE



Administrative building
Weighing platform up to 60 t. load
Disinfection area
Garage with a workshop



Separating installation with capacity 15 600 t./y.



Composting plant with capacity 10 000 t./y.

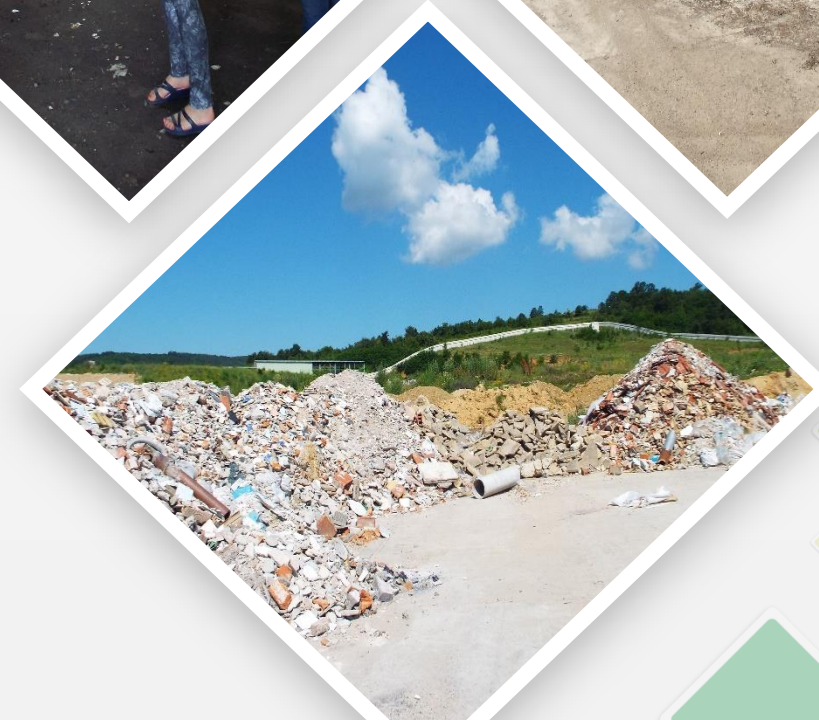
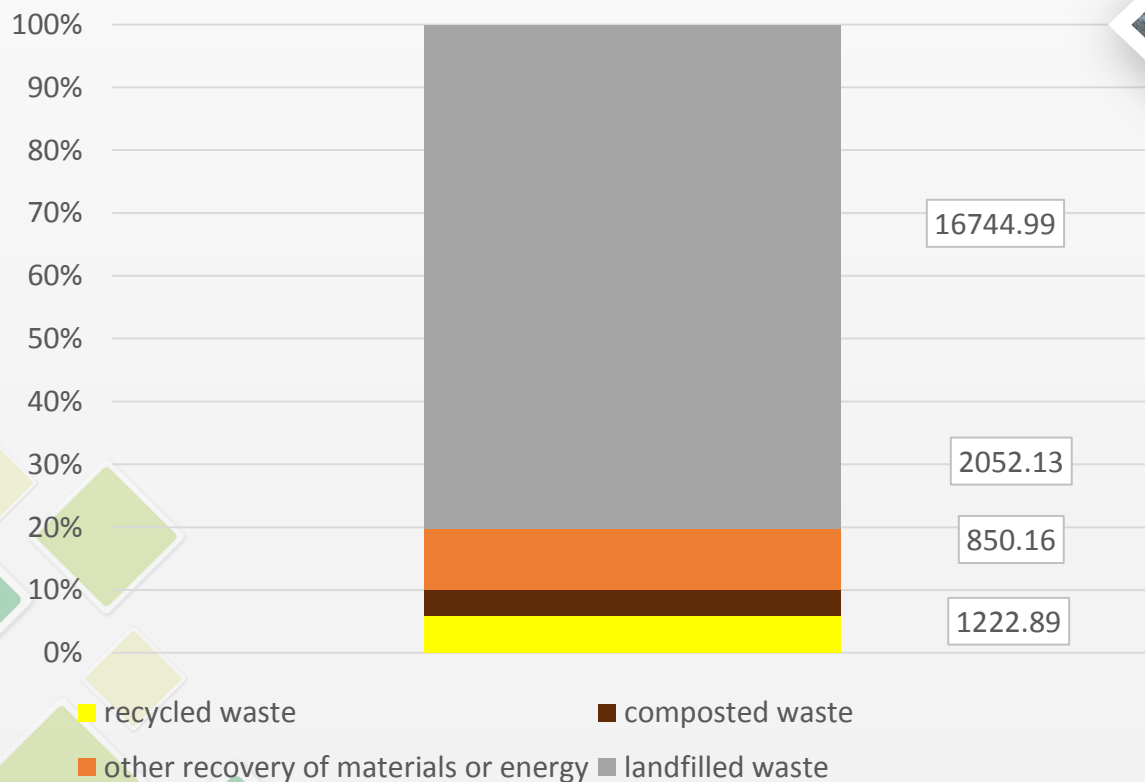


Landfill with capacity 397 428 m³



THE RESULTS

Results from the treatment of household waste registered as an input in the Regional system





THE KEY TO SUCCESS: CAMPAIGNS

BIOWASTE FOR COMPOST CAMPAIGN AND INFORMATIONAL POINTS AT THE LARGER NEIGHBORHOODS





THE KEY TO SUCCESS: **INITIATIVES**

EDUCATIONAL INITIATIVES WITH KIDS, PRESENTATIONS, VISITS AT THE REGIONAL SYSTEM FOR WASTE TREATMENT, OPEN DOORS DAY ETC.





THE KEY TO SUCCESS: **THE ARTISTIC APPROACH**

PUPPET THEATRE PLAY, THE CHARMS OF THE WASTE, ART AT THE REGIONAL WASTE TREATMENT SYSTEM





ACTION PLAN LEADING TO CIRCULAR ECONOMY

- **WORKING WITH THE POPULATION USING ATTRACTIVE LONG TERM CAMPAIGNS WITH REMEMBARABLE CONTENT**
- **INFORMATION MATERIALS ADAPTED TO THE DIFFERENT TARGET GROUPS**
- **IMPROVING THE SEPARATE COLLECTION AT THE SOURCE**
- **RESCIEIVING AT LEAST 30 % RECYCLING, REUSE AND RECOVERY FROM THE INPUT MIXED HOUSEHOLD WASTE AT THE SEPARATION PLANT**
- **PRODUSING MORE HIGH QUALITY COMPOST BY REACHING LESS THAN 10 % CONTAMINATION WITH NON BIODEGREDEABLE WASTE OF THE BIOWASTE FROM HOUSEHOLDS**
- **IMPROVEMENT OF THE INSTALLATIONS FOR WASTE TREATMENT, PROVIDING POSSIBILITIES FOR TREATING DIFFERENT FRACTIONS FROM THE HOUSEHOLD WASTE**
- **DEVELOPING NEW SYSTEMS FOR COLLECTION OF OTHER REUSABLE AND RECYCABLE WASTE**



ОБЩИНА ГАБРОВО

WASTE MANAGEMENT IN GABROVO MUNICIPALITY



Denitsa Koleva

Ecologist, Regional landfill for non hazardous waste

d.koleva@gabrovo.bg

+359885577255