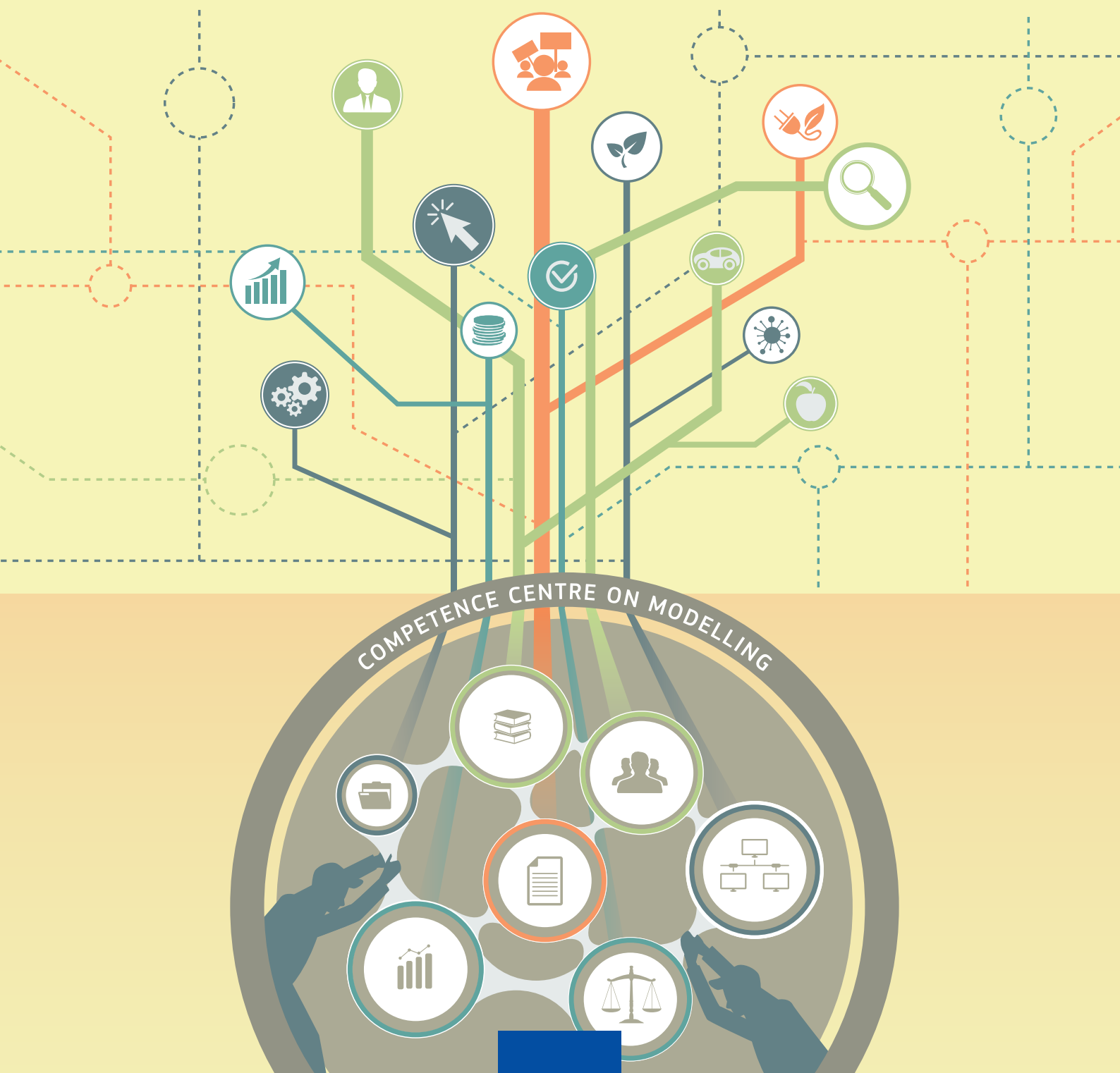




# EU Conference on modelling for policy support

26 - 27 November 2019 - Brussels

**Programme**



# EU Conference on modelling for policy support

26 - 27 November 2019 - Brussels

## Tuesday 26 November

08:30 - 09:30			Registration		
09:30 - 10:00			Opening — Room 0.A		
Veronica Gaffey, Chair of the Regulatory Scrutiny Board					
10:00 - 11:00			Plenary session 1 — Room 0.A		
<p>Chair: Paul Smits, Head of the Competence Centre on Modelling, European Commission, Joint Research Centre</p> <p>Keynote speaker: Mechthild Wörzdörfer, Director of Sustainability, Technology and Outlooks, International Energy Agency</p> <p>'Use of global models for policy recommendations'</p> <p>Discussant: Erik Delarue, Assistant Professor, Department of Mechanical Engineering, KU Leuven &amp; EnergyVille</p>					
11:00 - 11:30			Coffee break and Poster session 1		
11:30 - 13:00			Parallel sessions 1		
Model transparency and sensitivity analysis	Scenarios, model linkages and data for policy 1	Complex system modelling and multi-criteria decision making 1	Room 0.A	Room 0.B	Room 0.C
13:00 - 14:00			Lunch and Poster session 1		
14:00 - 15:30			Parallel sessions 2		
Model quality and transparency 1	Integrated assessment modelling	Qualitative and quantitative modelling	Room 0.A	Room 0.B	Room 0.C
15:30 - 16:00			Coffee break and Poster session 1		
16:00 - 17:30			Parallel sessions 3		
Scenarios, model linkages and data for policy 2	Integrated modelling: the case of the Food-water-energy-environmental NEXUS management under uncertainty and risks	Modelling value chains in global trade	Room 0.A	Room 0.B	Room 0.C
18:30			Social event		

# final Programme

## Wednesday 27 November

09:30 - 10:30

### Plenary session 2 — Room 0.A

**Chair:** Antonio Soria, Head of Unit, Economics of Climate Change, Energy and Transport, European Commission, Joint Research Centre  
**Keynote speaker:** Klaus Jacob, Research Director, Environmental Policy Research Centre (FFU), Freie Universität Berlin  
**'Assessing social impacts of policies: indicators and methods'**  
**Discussants:** Veronica Gaffey, Chair of the Regulatory Scrutiny Board  
Riel Miller Head of Futures Literacy, UNESCO

10:30 - 11:00

### Coffee break and Poster session 2

11:00 - 12:30

### Parallel sessions 4

Complex system modelling and multi-criteria decision making 2

Room 0.A

Engaging stakeholders and policy makers

Room 0.B

Modelling support for EU policy design: the EU's Long Term Strategy for climate

Room 0.C

12:30 - 13:30

### Lunch and Poster session 2

13:30 - 15:00

### Parallel sessions 5

Model quality and transparency 2

Room 0.A

Scenarios, model linkages and data for policy 3

Room 0.B

Computational and empirical issues in dynamic economy-wide models

Room 0.C

15:00 - 15:30

### Coffee break and Poster session 2

15:30 - 16:45

### Concluding session — Room 0.A

### Panel discussion

**Chair:** Leen Hordijk, Special Adviser, European Commission, Joint Research Centre  
**Confirmed speakers:** Marcel Adenauer, Organisation for Economic Cooperation and Development (OECD)  
Markus Amann, International Institute for Applied Systems Analysis (IIASA)  
Olga Ivanova, PBL Netherlands Environmental Assessment Agency  
Klaus Jacob, Environmental Policy Research Centre (FFU), Freie Universität Berlin  
Giulia Listorti, European Commission, Joint Research Centre  
Philippe Monfort, European Commission, Directorate-General for Regional and Urban Policy  
Marco Ratto, European Commission, Joint Research Centre  
Antonio Soria, European Commission, Joint Research Centre

16:45 - 17:00

### Closing Remarks — Room 0.A

Charlina Vitcheva, Acting Director-General, European Commission, Joint Research Centre  
Paul Smits, Head of the Competence Centre on Modelling, European Commission, Joint Research Centre

## Detailed outline of the sessions

26 November

### Parallel sessions 1, 11:30–13:00

#### **Model transparency and sensitivity analysis - Room 0.A**

Chair: Thierry Mara, European Commission, Joint Research Centre

*The challenge of achieving modelling transparency for policy makers*

Rosen R. A., Tellus Institute

*It started with a KISS: making complex modelling accessible, transparent and understandable*

Caivano A., M'Barek R., Ferrari E., European Commission, Joint Research Centre

*Knowing unknowns: adapting uncertainty and sensitivity analysis for impact assessment and policy-making*

Becker W., Rosati R., Albrecht D., European Commission, Joint Research Centre

*What has global sensitivity analysis ever done for us? A systematic review to inform policymaking through earth system modelling*

Pianosi E., Wagener T., Department of Civil Engineering and Cabot Institute, University of Bristol

*Modelling of uncertainty in defining safe operating spaces (SOS) in aquatic systems for support of policy development*

Gal G., Ofir E., Israel Oceanographic and Limnological Research

#### **Scenarios, model linkages and data for policy 1 - Room 0.B**

Chair: Nicole Ostlaender, European Commission, Joint Research Centre

*Assessing the costs of EU truck CO<sub>2</sub> targets with DIONE and VECTO models*

Krause J., Tansini A., Fontaras G., European Commission, Joint Research Centre  
Steininger N., European Commission, Directorate-General for Climate Action

*Energy systems modelling: toolbox development for policy decision support*

Delarue E., Poncelet K., Moncada J.A., University of Leuven, Energy Institute and EnergyVille  
Höschle H., EnergyVille and VITO

Kiviluoma J., VTT Technical Research Centre of Finland

*Macroeconomic effects of EU energy efficiency regulations on household dishwashers, washing machines and washer dryers*

Rocchi P., Rueda-Cantuche J.M., Boyano A., Villanueva A., European Commission, Joint Research Centre

*A food safety impact modelling system*

Bubbico A., Jones G., Panton S., Rose M., MacDonald S., Fera Science Ltd  
Yang J., University of International Business and Economics (UIBE)

*The marine modelling framework of the EU Commission. A earth-system model for supporting policy decisions*

Macias D., Stips A., Garcia-Gorriz E., Piroddi C., Miladinova S., Friedland R., Parn O., European Commission, Joint Research Centre

## **Complex system modelling and multi-criteria decision making 1 - Room 0.C**

Chair: Giuseppe Munda, European Commission, Joint Research Centre

*An accounting framework for the biophysical profiling of the European agricultural system*  
Cadillo Benalcazar J.J., Renner A., Institute of Environmental Science and Technology (ICTA),  
Universitat Autònoma de Barcelona

Giampietro M., Institute of Environmental Science and Technology (ICTA), Universitat Autònoma  
de Barcelona and Catalan Institution for Research and Advanced Studies (ICREA)

*Integrative planning for a sustainable, prosperous future*

Chan D., Urantowka W., Pedercini M., Millennium Institute

*Decision support system for maritime spatial planning within blue growth  
and ecosystem-based management*

Abramic A., Garcia Mendoza A., Phorè S., Fernandez- Palacios Y., Haroun Tabraue R., ECOAQUA  
Institute, Scientific and Technological Marine Park, University Las Palmas de Gran Canaria

*Methodological reflections on the European Commissions' 2013 use of CBA  
for air pollution policy*

Åström S., IVL Swedish Environmental Research Institute Ltd.

## **Parallel sessions 2, 14:00-15:30**

### **Model quality and transparency 1 - Room 0.A**

Chair: Detlef Sprinz, PIK - Potsdam Institute for Climate Impact Research and University of  
Potsdam

*Challenges and opportunities of integrated policy modelling*

Hordijk L., Special Adviser, European Commission, Joint Research Centre  
Kancs d'A., European Commission, Joint Research Centre

*Modelling for EU policy support: impact assessments*

Acs S., Ostlaender N., Listorti G., Hradec J., Smits P., European Commission, Joint Research Centre  
Hardy M., UniSystems

Hordijk L., Special Adviser, European Commission, Joint Research Centre

*From modelling guidelines to model portfolio management*

Arnold T., Grey Bruce Centre for Agroecology  
Guillaume J.H.A., Australian National University  
Lahtinen T., Aalto University  
Vervoort, R. W., University of Sydney

*Post-hoc evaluation of model outcomes tailored to policy support*

Thulke H. H., Lange M., Helmholtz Centre for Environmental Research GmbH – UFZ

*The MIDAS touch - Maintaining an overview of model use by the EC through the EC Modelling  
Inventory and Knowledge Management System MIDAS*

Ostlaender N., Acs S., Listorti G., Hradec J., Smits P., European Commission, Joint Research Centre  
Hardy M., Ghirimoldi G., UniSystems

## **Integrated assessment modelling - Room 0.B**

Chair: Jan Bakkes, The Integrated Assessment Society

*Lessons from the use of the GAINS model to inform clean air policies in Europe*

Amann M., International Institute for Applied Systems Analysis (IIASA)

*Science for an evolved Common Agricultural Policy – the Scenar 2030 experience*

M'Barek R., Ferrari E., Genovese G., European Commission, Joint Research Centre

*Examples of Europe's marine ecosystem modelling capability for societal benefit*

Heymans S. JJ., European Marine Board

Skogen M. D., Institute of Marine Research, Norway

Schrum C., Helmholtz Center for Materials and Coastal Research

Solidoro C., National Institute of Oceanographic and Experimental Geophysics, Italy

Serpetti N., Bentley J., Scottish Association of Marine Science

*Multi-Objective Local Environmental Simulator (MOLES): model specification, algorithm design and policy applications*

Tikoudis I., Oueslati W., Organisation for Economic Cooperation and Development (OECD)

*Physiologically based kinetic modelling - a bridge between biological science and public health policy*

Paini A., Whelan M., Asturiol D., Worth A., European Commission, Joint Research Centre

## **Qualitative and quantitative modelling - Room 0.C**

Chair: Duncan Cass Beggs, General Secretariat, Organisation for Economic Cooperation and Development (OECD)

*Integrating qualitative scenarios with quantitative modelling: lessons learned from recent EC foresight projects*

Ricci A., ISINNOVA – Institute of Studies for the Integration of Systems

*Towards absolute measure of poverty in the European Union – A pilot study*

Cseres-Gergely Z., Menyhert B., European Commission, Joint Research Centre

*The Global Conflict Risk Index (GCRI)*

Halkia M., Ferri S., Papazoglou M., Van Damme M. S., Thomakos D., European Commission, Joint Research Centre

*Modelling stakeholders knowledge and requirements on soil multifunctionality across EU*

Bampa F., Creamer R., Soil Biology Group, Wageningen University & Research

O'Sullivan L., Johnstown Castle, Teagasc

Trajanov A., Debeljak M., Department of Knowledge Technologies, Jozef Stefan Institute

Madena K., Chamber of Agriculture Lower Saxony

Spiegel H., Sanden T., Austrian Agency for Health and Food Safety

Bugge Henriksen C., Department of Plant and Environmental Sciences, University of Copenhagen

Jones A., European Commission, Joint Research Centre

Sturel S., French Chambers of Agriculture

*The politics of models: socio-political discourses in the modelling of energy transition and transnational trade policies*

Capari L., Udrea T., Fuchs D., Institute of Technology Assessment, Austrian Academy of Sciences

Bauer A., Department of Science, Technology & Society Studies, University Klagenfurt & Institute of Technology Assessment, Austrian Academy of Sciences

### Parallel sessions 3, 16:00-17:30

#### Scenarios, model linkages and data for policy 2 - Room 0.A

Chair: Andreas Veisapak, European Commission, DG for Communications Networks, Content and Technology

*Combining micro and macro simulations to assess the distributional impacts of energy transitions. Evidences from the French national low carbon strategy*

Ravigné E., Ghersi F., Nadaud F., International Centre for Research on the Environment and the Development, CIRED

*Energy security assessment framework to support energy policy decisions*

Augutis J., Krikštolaitis R., Martišauskas L., Lithuanian Energy Institute and Vytautas Magnus University

*Decarbonising transports in Portugal up to 2050: possible pathways*

Tente H., Dias L., Monjardino J., Fortes P., Ferreira F., Seixas J., CENSE – Center for Environmental and Sustainability Research, Universidade NOVA de Lisboa

*Modelling the macroeconomic and employment Impacts of future mobility disruption Scenarios*

Tamba M., Saveyn B., Krause J., Grosso M., Duboz A., Ciuffo B., Fana M., Fernandez-Macias E., European Commission, Joint Research Centre

*Global trends of methane emissions and their impacts on ozone concentrations*

Van Dingenen R., Dentener F., Crippa M., Guizzardi D., Janssens-Maenhout G., European Commission, Joint Research Centre

#### Integrated modeling: the case of the Food-water-energy-environmental

#### NEXUS management under uncertainty and risks - Room 0.B

Chair: Ad de Roo, European Commission, Joint Research Centre

*Introduction: Water-Energy-Food- Ecosystems modelling of the impacts of current and future climate, land-use and socio-economical changes combined with policy measures in Europe*

Ad de Roo, European Commission, Joint Research Centre

*A strategic decision-support system for strategic robust adaptation to climate change and systemic risks in land use systems: Stochastic integrated assessment GLOBIOM model*

Ermolieva T., Havlik P., Boere E., Balkovic J., Skalský R., Folberth C., Khabarov N., Fritz S., Obersteiner M., Ermoliev Y., International Institute for Applied Systems Analysis (IIASA)

*An integrated environmental-economic model for robust pollution control under uncertainty*

Wildemeersch M., Ermolieva T., Ermoliev T., Obersteiner M., International Institute for Applied Systems Analysis (IIASA)

Tang S., The Ohio State University

*Policy impact on biofuel or electricity production from biomass in Europe*

Leduc S., Patrizio P., Kraxner F., International Institute for Applied Systems Analysis (IIASA)

Mesfun S., RISE Research Institutes of Sweden

Staritsky I., Elbersen B., Wageningen University & Research

Lammens T., BTG Biomass Technology Group

*Robust food-energy-water-environmental security management: linking distributed sectorial and regional models*

Ermoliev Y., Ermolieva T., Havlik P., Rovenskaya E., International Institute for Applied Systems Analysis (IIASA)

## **Modelling value chains in global trade - Room 0.C**

Chair: Marcel Adenauer, Trade and Agriculture Directorate, Organisation for Economic Cooperation and Development (OECD)

*Challenges of conducting policy impact analysis using PE models: the case of Brexit*

Nti F., Jones K., USDA Foreign Agricultural Service

*Shooting oneself in the foot? Trade war and global value chains*

Bellora C., Fontagné L., PSE, University Paris 1 and CEPII

*MAGNET - a team-based modular CGE approach for coherent cross-cutting policy assessments*

Kuiper M., van Meijl H., Tabeau A., Wageningen Economic Research, Wageningen University & Research

*Environmentally conscious transportation and logistics modelling for agri-food supply chains*

De A., Aditjandra P., Hubbard C., Gorton M., Newcastle University

Pang G., University of Birmingham

Thakur M., SINTEF

Samoggia A., University of Bologna

*Modelling fairness in FVCs: developing quantitative indicators*

Gudbrandsdottir I. Y., Cook D., Olafsdottir G., Oddsson G., Bogason S., University of Iceland

Stefansson H., University of Reykjavík

McGarraghy S., University College Dublin, National University of Ireland

## **Poster session 1**

*A global sensitivity analysis of smart grids project cost benefits analysis with correlated inputs*

Vitiello S., Albrecht D., Rosati R., European Commission, Joint Research Centre

Mara T.A., European Commission, Joint Research Centre

*A participatory process to design regional policy for rural development: the case of the Veneto Region*

Trestini S., Giampietri E., Boatto V., TeSAF Department, University of Padova

Povellato A., CREA Council for Agricultural Research and Economics

*Defining the applicability of animal-free approaches for skin allergy testing of chemicals*

Asturiol D., Casati S., Paini A., Worth A., European Commission, Joint Research Centre

*Employment effect of innovation*

Kancs d'A., European Commission, Joint Research Centre

Siliverstovs B., Bank of Latvia and KOF Swiss Economic Institute, ETH Zurich

*Forecasting the teaching workforce in Lithuania*

Leiputė B., Padvilikis G., Research and Higher Education Monitoring and Analysis Centre

Hyland A., University College Cork

*Global governance challenges: a case for big modelling*

Toth T., Comprehensive Nuclear-Test-Ban Treaty Organisation PC

Theodoropoulos G., Department of Computer Science and Engineering, SUSTech

*Modelling European economy as an ecosystem of contracts for smart policy making*

Telesca L., Hazard J., Trakti

*Modelling the social impact of open access knowledge repositories*

Skulimowski A. M. J., AGH University of Science and Technology, Chair of Automatic Control and Robotics, Decision Science Laboratory and International Centre for Decision Sciences and Forecasting, Progress & Business Foundation, Kraków

*PIRAMID: a new methodology to build baselines for CGE models*

Wojtowicz K., Rey Los Santos L., Vandyck T., Tamba M., Weitzel M., Saveyn B., European Commission, Joint Research Centre

Temursho U., IOpedia



27 November

Parallel sessions 4, 11:00 – 12:30

### **Complex system modelling and multi-criteria decision making 2 - Room 0.A**

Chair: Marco Ratto, European Commission, Joint Research Centre

*Making sustainability models more robust: dealing with the complexity of the metabolic pattern of social-ecological systems*

Giampietro M., Institute of Environmental Science and Technology (ICTA), Universitat Autònoma de Barcelona and Catalan Institution for Research and Advanced Studies (ICREA)

*Supporting result-based schemes. The case of ex-post assessment of agri-environmental-climatic schemes*

Bartolini F., Vergamini D., Department of Agriculture, Food and Environment, University of Pisa  
Longhitano D., Povellato A., Council for Agriculture Research and Analysis of Agricultural Economics, Italy

*Exploring the (non-)use and influence of models in Belgian climate policy-making: a multiple case study*

Fransolet A., Centre for Studies on Sustainable Development (DGES-IGEAT), Université Libre de Bruxelles

*Assessing the potential of machine learning algorithms for agent-based models from an innovation policy perspective*

Müller M., Bogner K., Pyka A., University of Hohenheim  
Kudic M., University of Bremen

*Machine learning in the service of policy targeting: the case of public credit guarantees*  
de Blasio G., Ciani E., D'Ignazio A., Andini M., Bank of Italy

### **Engaging stakeholders and policy makers - Room 0.B**

Chair: Giulia Listorti, European Commission, Joint Research Centre

*Complex modelling to achieve carbon neutrality in Portugal*

Seixas J., Fortes P., Ferreira F., Tente H., Monjardino J., Gouveia J.P., Dias L., Palma P., Lopes R., CENSE, NOVA University Lisbon

Avillez F., Aires N., Vale G., AGROGES, Sociedade de Estudos e Projetos, Lda.

Martinho S., Barroso J. E., Lasting Values, Lda.

Barata P., Get2C

*System dynamics modelling as strategic vision for transforming adult social care in Northern Ireland: from primary research to procurement*

Wylie S., Strategic Investment Board

Martin J., Department of Health, Northern Ireland

*The use of models to support the design and implementation of the EU Cohesion Policy*

Monfort P., European Commission, Directorate-General for Regional and Urban Policy

*Measuring and explaining the EU's Effect on national climate performance*

Avrami L., Department of Political Science and Public Administration, National and Kapodistrian University of Athens

Sprinz D. F., PIK - Potsdam Institute for Climate Impact Research and University of Potsdam.

*The importance of modelling purpose for policy*

Edmonds B., Centre for Policy Modelling, Manchester Metropolitan University Business School

## **Modelling support for EU policy design: the EU's Long Term Strategy for climate - Room 0.C**

Chair: Alessia De Vita, E3MLab, National Technical University of Athens

### *Introduction*

van Ierland T., European Commission, Directorate-General for Climate Action

### *Developing a global context for regional 1.5°C scenarios*

Keramidas K., Tchung-Ming S., Diaz-Vazquez A., Després J., Schmitz A., European Commission, Joint Research Centre

### *Modelling carbon neutral energy systems*

Zazias G., Evangelopoulou S., Fotiou T., Kannavou M., Siskos P., Moysoglou Y., Statharas S., De Vita A., Capros P., E3MLab, National Technical University of Athens

### *Costs and potentials for reducing non-CO<sub>2</sub> gases*

Höglund-Isaksson L., Winiwarter W., Purohit P., International Institute for Applied Systems Analysis (IIASA)

### *The land use sector as key to offset residual emissions by 2050*

Frank S., Gusti M., Forsell N., Havlík P., International Institute for Applied Systems Analysis (IIASA)

### *Socio-economic aspects of EU decarbonisation*

Weitzel M., Vandyck T., Rey L., Wojtowicz K., Saveyn B., European Commission, Joint Research Centre

## **Parallel sessions 5, 13:30-15:00**

### **Model quality and transparency 2 - Room 0.A**

Chair: Daniel Albrecht, European Commission, Joint Research Centre

#### *Map or compass? Improving model contribution to long-term climate strategy.*

##### *Insights from 4 country studies*

Lecocq F., AgroParistech-CIRED

Nadai A., Cassen C., CNRS-CIRED

Combet E., Ademe, French Environment and Energy Management Agency

#### *Modelling climate-energy linkages in national energy and climate plans: achievements and challenges*

Boromisa A., Institute for Development and International Relations, Croatia

#### *Analysis of current climate and energy policies: are countries on track to meet their NDC targets?*

den Elzen M., van Soest H., Roelfsema M., PBL Netherlands Environmental Assessment Agency

Kuramochi T., Fekete H., Höhne N., NewClimate Institute

Forsell N., International Institute for Applied Systems Analysis (IIASA)

#### *How to make social-environmental modelling more useful to support policy?*

Dreßler G., Kreuer D., Will M., Thulke H. H., Müller B., UFZ, Department of Ecological Modelling, Helmholtz Centre for Environmental Research - UFZ

#### *Quantitative pest risk assessment – a modelling methodology supporting EU plant health policy*

Bragard C., UCLouvain, Earth & Life Institute

Gardi C., Kozelska S., Maiorano A., Mosbach-Schulz O., Pautasso M., Stančanelli G., Tramontini S., Vos S., European Food Safety Authority

MacLeod A., Department for Environment, Food and Rural Affairs, UK

Parnell S., School of Environment and Life Sciences, University of Salford

Vicent Civera A., Centro de Protección Vegetal y Biotecnología, Instituto Valenciano de Investigaciones Agrarias (IVIA)

van der Werf W., Centre for Crop Systems Analysis, Wageningen University

### **Scenarios, model linkages and data for policy 3 - Room 0.B**

Chair: Eckehard Rosenbaum, European Commission, Joint Research Centre

#### *Strategic sourcing 2.0: improving fiscal efficiency using big data*

Borges de Oliveira A., World Bank

Fabregas A., Organisation for Economic Cooperation and Development (OECD)

Fazekas M., Central European University

#### *Uses and potential of large-scale, micro level government contracting datasets for policy modelling*

Fazekas M., Central European University

Tóth B., University College London

Czibik A., Government Transparency Institute

#### *Using synthetic control methods for policy evaluation: modelling challenges, new data, and evidence from EU carbon markets*

Bayer P., School of Government and Public Policy, University of Strathclyde

Aklin M., Department of Political Science, University of Pittsburgh

#### *Combining graphical and command line user interfaces for economic analysis: the capriR package for processing, visualizing and analysing large sets of simulation results*

Himics M., European Commission, Joint Research Centre

#### *Wildfire modelling for adaptation policy options in Europe*

Krasovskii A., Khabarov N., Kindermann G., Kraxner F., International Institute for Applied Systems Analysis (IIASA)

### **Computational and empirical issues in dynamic economy-wide models - Room 0.C**

Chair: D'Artis Kancs, European Commission, Joint Research Centre

#### *Using the Global Multi-Country model in ECFIN's forecast exercises*

Calés L., Cardani R., Croitorov O., Di Dio F., Frattarolo L., Giovannini M., Hohberger S., Pataracchia B., Ratto M., European Commission, Joint Research Centre

Pfeiffer P., Roeger W., Vogel L., European Commission, Directorate General for Economic and Financial Affairs

#### *Stationary rational bubbles in non-linear macroeconomic policy models*

Kollmann R., Université Libre de Bruxelles and Centre for Economic Policy Research (CEPR)

#### *The macroeconomic and sectoral impact of EU competition policy*

Cai M., Cardani R., Pericoli F., European Commission, Joint Research Centre

Dierx A., Ilzkovitz F., European Commission, Directorate-General for Competition

#### *Direct and indirect impacts of European Institute of Innovation and Technology (EIT) investments on regional economic growth*

Ivanova O., Thissen M., PBL Netherlands Environmental Assessment Agency

Kancs d'A., European Commission, Joint Research Centre

#### *Modelling the labour market and agricultural sector in an integrated CGE framework: an application to the Brexit case*

Angioloni S., Wu Z., Department of Agri-Food Economics, Agri-Food Biosciences Institute

Berritella M., Dipartimento di Scienze Economiche Aziendali e Statistiche, Università degli studi di Palermo

Aguiar A. H., Center for Global Trade Analysis Project, Purdue University

## Poster session 2

*A coupled modelling system for the integrated assessment of continental freshwaters, coastal and marine waters*

Friedland R., Bisselink B., Bouraoui F., de Roo A., Gelati E., Garcia-Gorriz E., Grizetti B., Guenther S., Macias D., Miladinova S., Parn O., Piroddi C., Stips A., Vigiak O., European Commission, Joint Research Centre

*A platform to manage air quality in Europe with the use of high-resolution modelling tools  
Application and validation in Krakow*

Vranckx S., Hooyberghs H., Vanhulsel M., Blyth L., Smeets N., Veldeman N., Maiheu B., Lefebvre W., Janssen S., VITO, Vlaamse Instelling voor Technologisch Onderzoek  
Bielas E., Zaleski W., Transport System Division, Municipality of Krakow

*Assessing the value of regional cooperation in air pollution control*

De Angelis E., Carnevale C., Turrini E., Volta M., University of Brescia

Ferrari F., Maffei G., TerrAria s.r.l.

Guariso G., Politecnico di Milano

Pisoni E., European Commission, Joint Research Centre

*Biomass in the European Electricity System: Emission Targets and Investment Preferences*

Lehtveer M., Department of Space, Earth and Environment, Chalmers University of Technology

Fridahl M., The Centre for Climate Science and Policy Research (CSPR), Department of Thematic Studies, Environmental Change, Linköping University

*Easy-to-use modelling tool for urban air pollution with very high resolution HPC simulations*

Horváth Z., Liskai B., Kovács A., Budai T., Tóth C., Széchenyi István University

*MAQ, an integrated assessment model to support air quality policy at regional scale*

Turrini E., Carnevale C., De Angelis E., Volta M., DIMI, University of Brescia

*Modelling the renewable transition: strategies and policies for reducing energetic and raw materials costs*

Samsó R., Solé J., Madurell T., García Olivares A., Instituto de Ciencias del Mar, Consejo Superior de Investigaciones Científicas, Spain

*On the sense of applying 'Frankenstein monster' models*

Kremers H., ModlEcon

*Policy failure in the field of electro-mobility*

Gómez Vilchez J., European Commission, Joint Research Centre

*The CO<sub>2</sub>MPAS vehicle simulation model and its role in the European light-duty vehicle CO<sub>2</sub> certification process*

Pavlovic J., Arcidiacono V., Maineri L., Anagnostopoulos K., Komnos D., Saporiti F., Corsi S.,

Valverde V., Ciuffo B., Fontaras G., European Commission, Joint Research Centre

Lindvall S., Directorate-General for Climate Action

## Scientific Committee

Chair: Leen Hordijk, Special Adviser, European Commission, Joint Research Centre, Competence Centre on Modelling

Jan Bakkes, The Integrated Assessment Society

Francesca Campolongo, European Commission, Joint Research Centre

Raja Chakir, INRA-AgroParisTech

Rob Dellink, Organisation for Economic Cooperation and Development (OECD)

Tatiana Ermolieva, International Institute for Applied Systems Analysis (IIASA)

Mario Giampietro, Universitat Autònoma de Barcelona & Catalan Institution for Research and Advanced Studies (ICREA)

Joseph Guillaume, Australian National University and Aalto University

Leonardo Iania, Université Catholique de Louvain

Alban Kitous, DG Energy, European Commission

Pierluigi Lonero, DG Agriculture and Rural Development, European Commission

Andreas Löschel, University of Münster

Alan Matthews, Trinity College, Dublin

Robert M'Barek, European Commission, Joint Research Centre

László Pintér, Central European University (CEU) and International Institute for Sustainable Development (IISD)

Hector Pollitt, Cambridge Econometrics and Cambridge Centre for Environment, Energy and Natural Resource Governance, University of Cambridge

Stef Proost, KU Leuven

Werner Roeger, DG Economic and Financial Affairs, European Commission

Roberto Savona, Università degli Studi di Brescia

Antonio Soria Ramirez, European Commission, Joint Research Centre

Detlef Sprinz, Potsdam Institute for Climate Impact Research (PIK) and University of Potsdam

John van Aardenne, European Environment Agency

Tom van Ierland, DG Climate Action, European Commission

Hans van Meijl, Wageningen University and Research

## Organizing committee

European Commission, Competence Centre on Modelling

Paul Smits, Head of the Competence Centre on Modelling

Giulia Listorti, contact person

Daniel Albrecht

Giuseppe Munda

Nicole Ostlaender

Eckehard Rosenbaum

Contacts and further information:

- Conference webpage: <https://ec.europa.eu/jrc/en/event/conference/eu-conference-modelling-policy-support>
- Conference mailbox: [EU-CONF-MOD@ec.europa.eu](mailto:EU-CONF-MOD@ec.europa.eu)
- CC-MOD webpage: [https://ec.europa.eu/knowledge4policy/modelling\\_en](https://ec.europa.eu/knowledge4policy/modelling_en)



