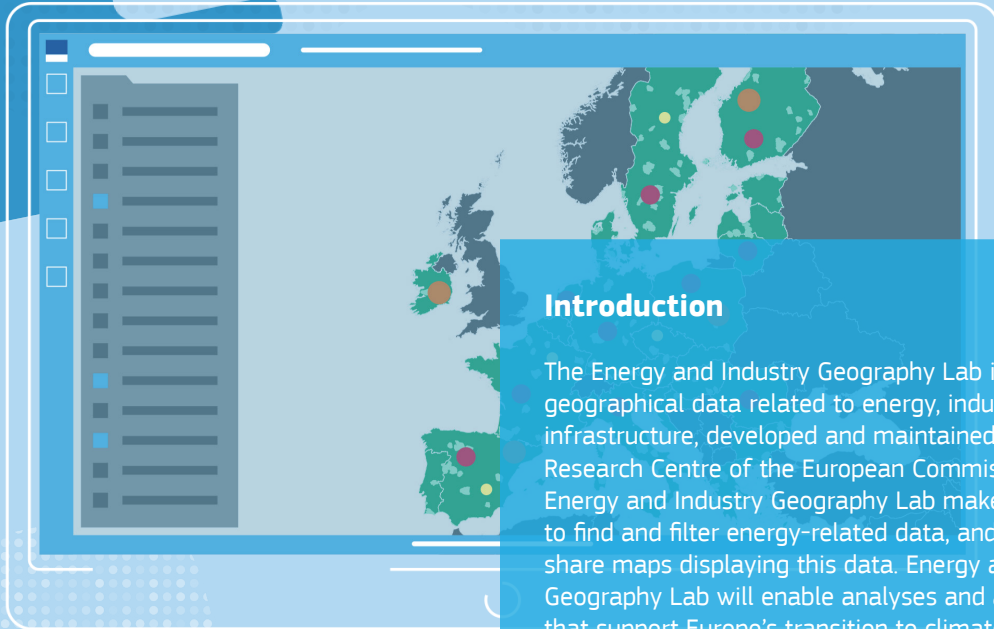
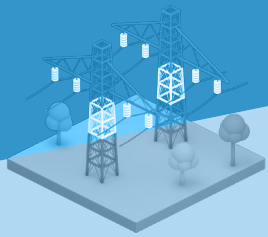


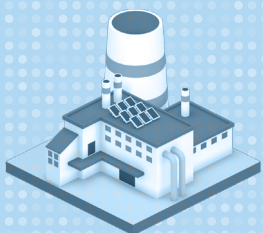
Energy and Industry Geography Lab Quickstart Guide



Introduction

The Energy and Industry Geography Lab is a hub for geographical data related to energy, industry and infrastructure, developed and maintained by the Joint Research Centre of the European Commission. The Energy and Industry Geography Lab makes it possible to find and filter energy-related data, and create and share maps displaying this data. Energy and Industry Geography Lab will enable analyses and assessments that support Europe's transition to climate neutrality.

This Quickstart Guide explains how to display, find and view data within the Energy and Industry Geography Lab. For information on how to filter, analyse and export data, please check the other tutorial content.



Main Map

The main view within the application is the basemap. By default, no data layers are selected, resulting in an empty map and legend.

Navigating the map can be done by both mouse or keyboard. Panning the map can be done by dragging using the mouse or using the arrow keys on your keyboard. Zooming is done by scrolling on mouse or trackpad, by pressing + or - on your keyboard or by using the **+** or **-** buttons within the main view.

Data Layers

To display data on the map, enable a data layer through the Layer widget. Click on the Layer widget icon to open the layer list. To draw the data from a layer onto the map, check the checkbox next to the layer. To search for a specific layer, press the **Q** search icon at the top of the layer list. Once data is drawn on the map, the legend will update automatically.

The order in which layers are drawn on the map is the same as the order that they appear in the layer list: the layers at the top of the list will be drawn over layers lower in the list.

To change the order of this list, open the **...** options menu of that layer and select any of the move options. Through this same menu you can also change the transparency with which a layer is drawn.

Viewing Data

To view the specific data of a place or area, click on this specific place or area to bring up the Data Popup Window. The respective place or area will turn bright blue to show it is selected. The Data Popup window shows all the data associated with the place or area you selected.


In some cases, multiple data entries can occupy the same place on the map. When this is the case, the top of the Data Popup Window will read, for example: **"1 out of 3"**, showing that there are two other data entries roughly at the same place as where you clicked. To select a different data entry, use the **◀▶** arrow buttons in the Data Popup Window to switch between data entries occupying the same place on the map. When switching data entries, the associated place or area on the map will automatically become selected.

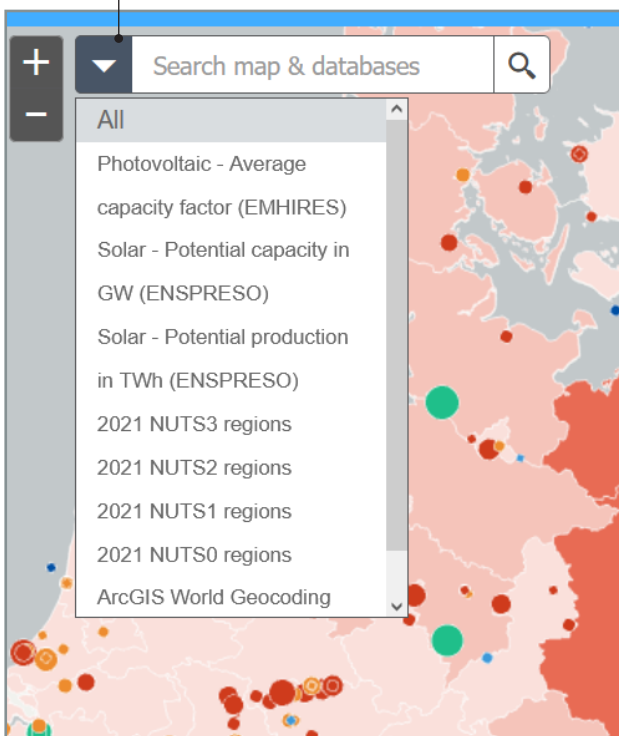
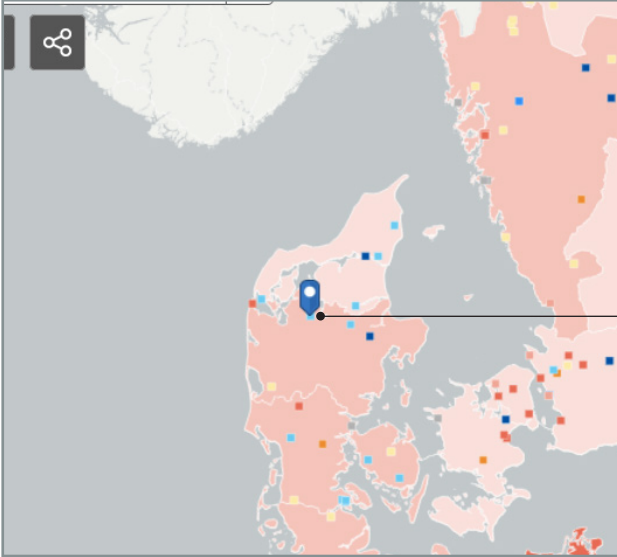
To view the raw data of multiple points at the same time, use the Attribute Table

The screenshot displays the 'Energy and Industry Geography Lab' application. The interface includes a top navigation bar with icons for LAYERS, LEGEND, SELECT, and FILTER. The 'Layer List' on the left shows several layers, with 'Airports (Eurostat GISCO)' checked. The main map area shows a geographical view of Europe with numerous green dots representing data points. A 'Data Popup Window' is open over a point in Frankfurt, displaying details for 'Airports (Eurostat GISCO): FRANKFURT FAFATSO (FEDERAL ARMED FORCE)'. The popup shows fields like icao_code, airport_name, country_code, iata_code, public_indicator, instrument_flight_rules, visual_flight_routes, international_flag, closest_city, and altitude_m. A search bar at the top of the map is labeled 'Search in map & databases'.

Airports (Eurostat GISCO): FRANKFURT FAFATSO (FEDERAL ARMED FORCE)	
icao_code	ETCZ
airport_name	FRANKFURT FAFATSO (FEDERAL ARMED FORCE)
country_code	DE
iata_code	FRA
public_indicator	Y
instrument_flight_rules	Y
visual_flight_routes	Y
international_flag	Y
closest_city	Frankfurt
altitude_m	92

Marking Places

If you want to highlight a specific point, you can add a  marker to that point. To mark a specific point on the map, press the **...** options menu in the Data Popup Window and select **"Add Marker"**. To remove this marker, select it, press the **...** options menu in the Data Popup Window and select **"Remove Marker"**.

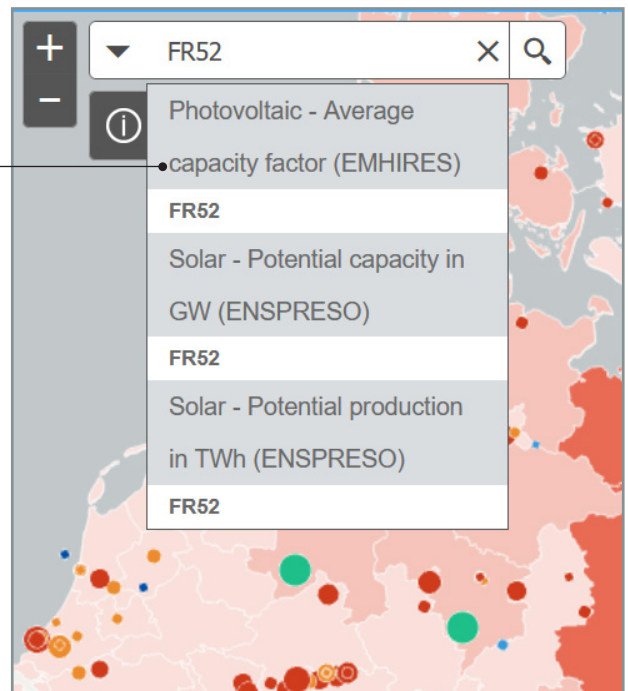


Searching for data

By default, the search bar allows you to search across all data layers, as well as search for geographical places such as cities, provinces, bodies of water and mountains. To search within a specific layer, select this layer from the dropdown menu next to the search bar. When there are search results in more than one data layer, the layer associated with a result is displayed above the result.

For data layers, you can search based on the name of a place or area, for a specific NUTS code or other codes specific to that data (for example: Energy Identification Codes when searching for power plants).

Due to the structure of some of the data layers, it is possible to get search results that have the same name. In most cases, this means the results are in the same location on the map, but this is not always the case.



Contact

For questions about the Energy and Industry Geography Lab, send an email to the Joint Research Centre team.

Email: JRC-EIGL@ec.europa.eu
 Website: <https://ec.europa.eu/eigl>