



Global Exposure to Natural Hazards

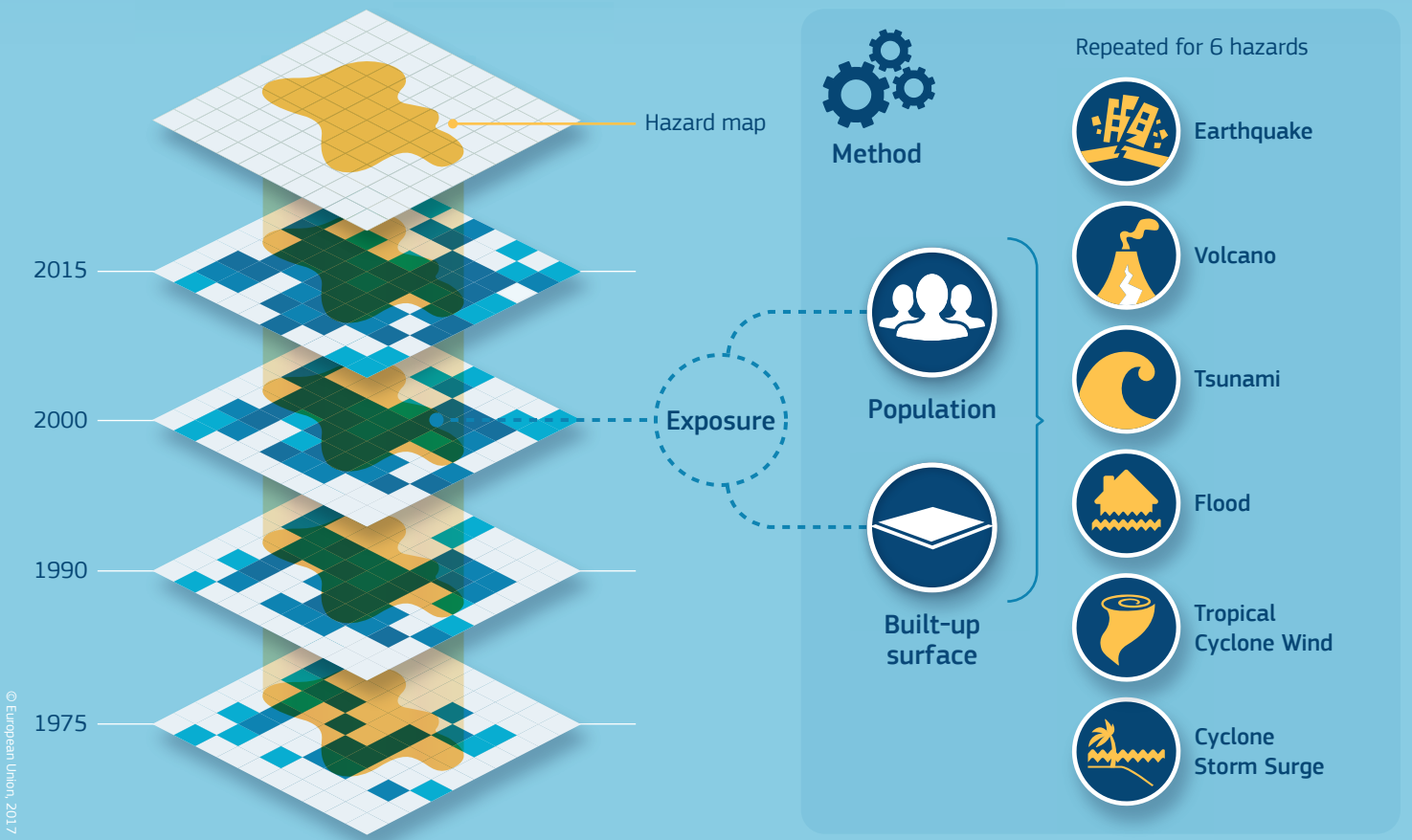
Global open data for monitoring the Sendai targets

The Global Human Settlements Layer (GHSL)



The most **complete**, **consistent**, **global**, **free** and **open** dataset on human settlements – from the village to the megacity

GHSL for Disaster Risk Reduction



© European Union, 2017



For further information and to explore the GHSL:
<http://ghsl.jrc.ec.europa.eu>

Joint
Research
Centre

GHSL is one the core datasets for
the GEO Human Planet Initiative

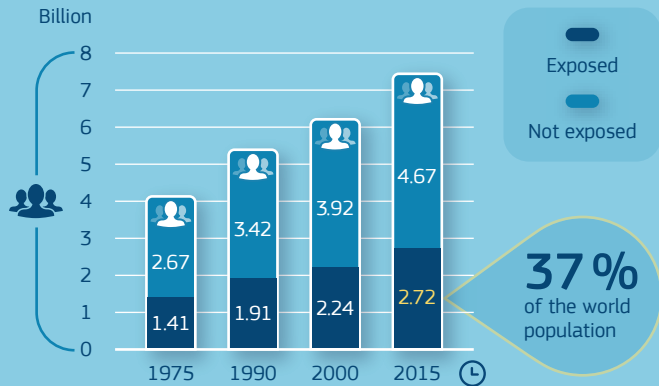


Key messages from the Atlas of the Human Planet 2017



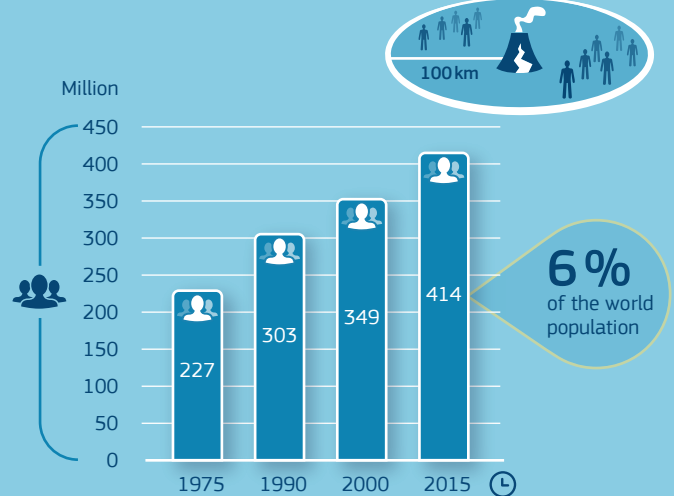
EARTHQUAKE

Population potentially exposed to earthquakes on the planet increased from **1.4 to 2.7 billion** between 1975 and 2015



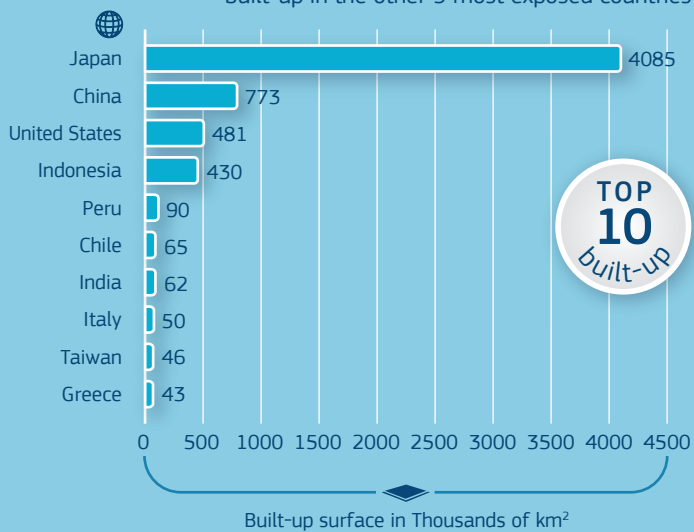
VOLCANO

In 2015, **414 million** people lived near one of the **220 most dangerous volcanoes** and could be affected by the consequences of eruptions



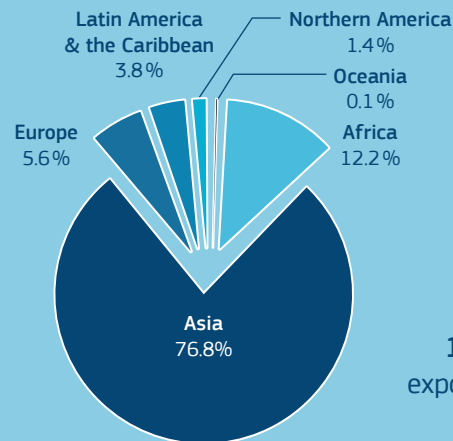
TSUNAMI

The built-up surface potentially exposed to tsunami in Japan is **2 times** the sum of built-up in the other 9 most exposed countries



FLOOD

Flood, the most frequent natural hazard, potentially affects people in Asia and Africa more than in other regions

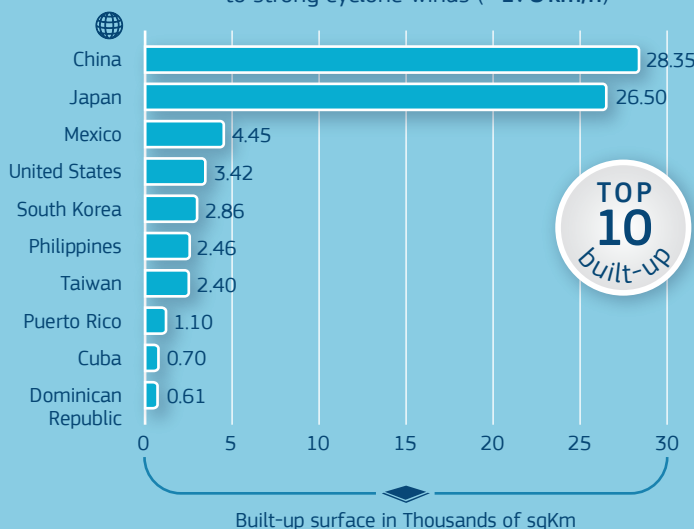


1 billion people exposed on the planet



TROPICAL CYCLONE WIND

China and Japan are by far the countries with the largest built-up surface exposed to strong cyclone winds (> 178 km/h)



CYCLONE STORM SURGE

Population exposed to sea level surge due to cyclones in **China** approximates the sum of the exposed population of **India + Japan + the Philippines**

